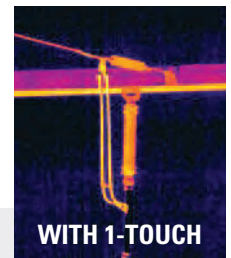




THERMAL IMAGING CAMERA WITH VIEWFINDER

FLIR T800-Series™

The FLIR T800-Series is the new standard in predictive/preventant maintenance tools for utility, electro-mechanical, manufacturing, and building diagnostics professionals. The T840 and T860 offer an optional Inspection Routing module that speeds data collection and reporting by helping users plan out surveys and then organizing images and data by location. An integrated eyepiece viewfinder, bright 4-inch color LCD, and thoughtful ergonomic design allow inspectors to comfortably survey equipment for signs of failure—even in challenging lighting conditions. Advanced features such as 1-Touch Level/Span contrast enhancement and tack-sharp laser-assisted autofocus ensure the camera takes accurate temperature measurements every time. Maintain consistent uptime through regular maintenance routines with this flexible and innovative IR camera.



IMPROVE WORKFLOW EFFICIENCIES

On-board routing and new FLIR software aid in the collection and management of critical data

- Develop and upload routes to the camera for streamlined inspections of critical assets within a plant or facility
- Acquire temperature data, thermal, and visual imagery in a logical sequence for faster preventative/predictive maintenance procedures
- Automate data management and reporting through easy transfer of organized files to FLIR Thermal Studio Pro

AVOID COSTLY OUTAGES AND COMPONENT FAILURES

Assess the thermal health of equipment and systems from any angle, in any lighting conditions

- Adapt to any work environment with a vibrant 4" color LCD display and an integrated eye-piece viewfinder
- Image targets overhead or down low without strain thanks to the 180° rotating optical block and ergonomic design
- Accurately measure small targets over long distance or in large scenes with the optional 6° telephoto lens

MAKE CRITICAL DECISIONS QUICKLY

Save time and share data faster to increase in-field efficiency

- Ensure precision measurement with laser-assisted autofocus, 1-Touch Level/ Span, and exceptional temperature accuracy
- Avoid diagnostic errors with industry-leading image clarity from FLIR Vision Processing™, combining MSX®, UltraMax®, and proprietary adaptive filtering algorithms
- Optimize workflows with reporting features such as built-in voice annotation, customizable work folders, and Wi-Fi sync to

| Imaging and optical data | T840 | T860 |
|------------------------------|--|--|
| IR resolution | 464 × 348 (161,472 pixels, 645,888 with UltraMax®) | 640 × 480 (307,200 pixels, 1,228,800 with UltraMax®) |
| Detector pitch | 17 µm | 12 µm |
| Object temperature range | -20°C to 120°C (-4°F to 248°F); 0°C to 650°C (32°F to 1202°F); 300°C to 1500°C (572°F to 2732°F) | -20°C to 120°C (-4°F to 248°F); 0°C to 650°C (32°F to 1202°F); 300°C to 2000°C (572°F to 3632°F) |
| Digital zoom | 1-6× continuous | 1-8× continuous |
| Macro Mode (24° lens option) | 71 µm min. focus distance | 50 µm min. focus distance |

Detector data

| | |
|--------------------------|--|
| Detector type and pitch | Uncooled microbolometer |
| Thermal sensitivity/NETD | <30 mK @ 30°C (42° lens) |
| Spectral range | 7.5–14.0 µm |
| Image frequency | 30 Hz |
| Lens identification | Automatic |
| F-number | f/1.1 (42° lens) f/1.3 (24° lens), f/1.5 (14° lens), f/1.35 (6° lens) |
| Focus | Continuous with laser distance meter (LDM), One-shot LDM, One-shot contrast, manual |
| Minimum focus distance | 42° lens: 0.15 m 24° lens: 0.15 m; optional macro mode 14° lens: 1.0 m 6° lens: 5.0 m |
| Programmable buttons | 2 |

Image presentation

| | |
|--------------------|--|
| Display | 4-inch, 640 × 480 pixel touchscreen LCD with auto-rotation |
| Digital camera | 5 MP with built-in LED photo/video lamp |
| Color palettes | Iron, Gray, Rainbow, Arctic, Lava, Rainbow HC |
| Image modes | Infrared, visual, MSX®, Picture-in-picture |
| Picture-in-picture | Resizable and movable |
| UltraMax® | Activated in menu and processed in FLIR Tools® |

Measurement and analysis

| | |
|---------------------|--|
| Accuracy | ±2°C (±3.6°F) or ±2% of reading |
| Spotmeter and area | 3 each in live mode |
| Measurement presets | No measurement, Center spot, Hot spot, Cold spot, User Preset 1, User Preset 2 |

Measurement and analysis - Cont.

| | |
|----------------------------|--|
| Laser pointer | Yes |
| Laser distance meter | Yes; dedicated button, displays distance on-screen |
| On-screen area measurement | Yes; calculates area inside measurement box in m² or ft² |

Annotations

| | |
|--------------------|---|
| Inspection Routing | File created in FLIR Thermal Studio Pro using FLIR Route Creator plug-in |
| Voice | 60 sec. recording added to still images or video via built-in mic (has speaker) or via Bluetooth® |
| Text | Predefined list or touchscreen keyboard |
| Image Sketch | Infrared images, from touchscreen |
| GPS | Automatic image tagging |
| METERLiNK™ | Yes; connects to METERLiNK-enabled FLIR meters |

Image storage

| | |
|-----------------------|--|
| Storage media | Removable SD card |
| Image file format | Standard JPEG with measurement data included |
| Time lapse (Infrared) | 10 sec to 24 hrs |

Video recording and streaming

| | |
|------------------------------------|---|
| Radiometric IR video recording | Real-time radiometric recording (.csq) |
| Non-radiometric IR or visual video | H.264 to memory card |
| Radiometric IR video streaming | Compressed, over UVC |
| Non-radiometric IR video streaming | H.264, MPEG-4 over Wi-Fi; MJPEG over UVC or Wi-Fi |
| Communication interfaces | USB 2.0, Bluetooth, Wi-Fi, DisplayPort |
| Video out | DisplayPort |

Additional data

| | |
|---------------------------------|--|
| Languages | 21 |
| Battery type | Li-ion battery, charged in camera or on separate charger |
| Battery operation | Approximately 4 hours at 25°C (77°F) |
| Operating temperature range | -15°C to 50°C (5°F to 122°F) |
| Shock/Vibration/Encapsulation | 25 g (IEC 60068-2-27) / 2 g (IEC 60068-2-6) / IP54 |
| Safety | EN/UL/CSA/PSE 60950-1 |
| Weight (including battery) | 1.4 kg (3.1 lbs) |
| Size (l × w × h, lens vertical) | 150.5 × 201.3 × 84.1 mm (5.9 × 7.9 × 3.3 in) |

Package contents

Infrared camera, lens, front and rear lens caps, cleaning cloth, small eyecup, rechargeable battery (2 ea.), charger power supply, 15 W/3 A power supply, straps (lens cap, neck), cables (USB 2.0 A to USB Type-C, USB Type-C to USB Type-C, USB Type-C to HDMI and PD adapter), 8 GB SD card, printed documentation