



Advanced Test Equipment Rentals
www.atecorp.com 800-404-ATEC (2832)

FLUKE
networks.



OneTouch™ Series II
Network Assistant

The fastest tool for first response
troubleshooting



- **Web Support** Eliminate unnecessary trips and expenses when troubleshooting network problems with remote monitoring and control via a web browser.
- **Switch Support** Discover switch information and map devices to individual switch ports.
- **Key Device Ping** Verify connectivity to a list of user-defined devices, such as routers, servers and switches.
- **Duplicate IP Detection** Pinpoint duplicate IP addresses on your network with a single touch.
- **Cable and Fiber Testing** Identify cable length, opens, crossed wires, and split pairs. Measure fiber loss with the optional Fiber Test Kit.
- **NIC Detector** Identify network connections in wiring closets that are not currently used by desktop connections.

A one-touch view of all network components—even switches

Just one touch of the AutoTest icon displays the connectivity status of desktop stations, routers, servers, and switches. The user simply touches any component to get in-depth information. For example, the technician can press the switch icon to view switch interface information including type, status and speed, and IP address. The OneTouch™ Series II Pro also allows a technician to identify the switch port to which a PC or other network device is attached.

The OneTouch Series II testers eliminate guesswork by automatically identifying Novell®, Windows NT®, and NetBIOS® servers. The OneTouch makes troubleshooting TCP/IP networks easy by graphically displaying TCP/IP servers, printers, routers, and switches as well as duplicate IP addresses, subnets and SNMP devices. The Network Assistant also solves troublesome wiring problems by automatically identifying crossover cables and hub uplink ports. Individual tests for hubs and adapter cards are also available.

Model
Series II 10
Series II 10/100
Series II 10/100 Pro

Improved Network Visibility



OneTouch™ Series II Network Assistant Family

Cable Testing	Network Health	TCP/IP Discovery	Switch Discovery	Remote Web Monitoring	Remote Web Control	Device to Switch Port Mapping	Config Master	Key Device Ping
•	•	•	•	•				
•	•	•	•	•				
•	•	•	•	•	•	•	•	•

NETWORKSUPER

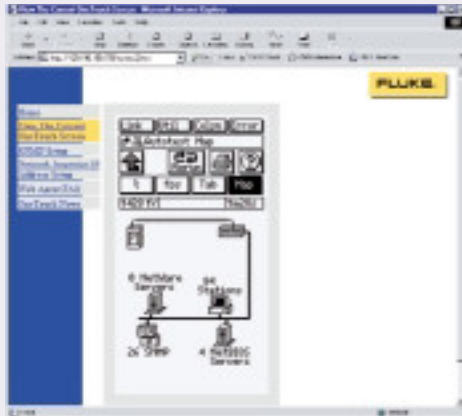


Network advice at your fingertips.

Determining an acceptable collision or utilization level is not always obvious from the network statistics, particularly for less experienced technicians. With a single touch of the Network Advice icon, users are empowered to interpret results that in the past required advanced expertise.

Remote Web monitoring and control reduce travel costs.

Imagine the time and money you could save if you could ship a test tool to a remote site, instruct a non-technical person how to plug it in, and then monitor and identify problems at that site via your web browser. The OneTouch Series II Pro supports remote control in addition to the basic Web access available in the OneTouch Series II models.



Configuring a workstation is a snap!

With the touch of the ConfigMaster™ icon, OneTouch Series II Pro users get the key information necessary to properly configure a device or workstation. Network information includes DNS server name, IP address range, subnet mask, default gateway, POP3, DNS, and WINS servers, frame type, and NetBIOS name. This handy feature eliminates the trial-and-error method of workstation configuration.

Enhance your OneTouch Series II with our optional packages

- **OneTouch Series II Reporter Software** - Generate professionally-formatted network inventory reports on IP or NetBIOS devices and document Ethernet collisions, utilization, and errors.
- **OneTouch Series II Internetwork Throughput** - Enables IP Performance testing during installation and maintenance of Enterprise backbones, WANs, and VPNs.
- **OneTouch Series II xDSL** - Connected directly to the Ethernet interface of the modem, the xDSL option measures actual transmission rates and tests the entire xDSL connection - all the way back to the service provider's network.



Decrease network maintenance costs by making your network response staff more productive

*It's Monday morning and network technicians are faced with problems. **Who are the top talkers causing congestion? Why can't a user access the server? Who is generating excessive errors? How many ports are up and running on the switch?** Solving these problems can be a real challenge, especially in today's switched, fast Ethernet and TCP/IP environments.*

Your frontline technicians need a test tool that can see beyond switches to quickly locate and resolve network problems. They need Fluke Networks OneTouch Series II Network Assistant.

OneTouch gives your response staff the power to solve network problems faster. Available in three models, OneTouch provides an in-depth look into your network, making it easy to confirm connectivity to servers, switches or routers; to test NIC cards, hubs or even cables; or to measure 10 and

100 Mbps Ethernet utilization, collisions, or errors. In addition, troubleshooters can deploy the OneTouch at remote locations and handle problems via their web browsers.

Improved network visibility. Decreased network maintenance costs. Faster frontline troubleshooting. You get it all with the OneTouch Series II Network Assistant.





Specifications

Media access	10BASE-T and 100BASE-TX ¹
Cable tests	Length, wiremap, split pairs
Ports	Hub/NIC connector (RJ-45) Wiremap connector (RJ-45) RS-232C PC/Printer port (DB-9)
Printers used	HP LaserJet series
Interface	Icon-based touchscreen display
Battery	Removable/rechargeable NiMH battery pack
Dimensions	22.1 cm x 11.8 cm x 6.3 cm (8.7 in x 4.7 in x 2.5 in)
Weight	0.7 kg (1.7 lbs)
Warranty	One year

¹ The 100BASE-TX media interface is available in the OneTouch Series II 10/100 and the OneTouch Series II 10/100 Pro Network Assistants.

Ordering Information

Model	Description
1TS210	OneTouch Series II 10 Network Assistant
1TS2100	OneTouch Series II 10/100 Network Assistant
1TS2PRO	OneTouch Series II 10/100 Pro Network Assistant

Each Fluke OneTouch Series II Network Assistant comes with a rechargeable NiMH battery pack (installed), holster, instrument case, AC adapter/battery charger, remote wire map unit (#1), and CD containing the user manual, a trial version of Ethernet Troubleshooting Basics Training and utility software.

Options and Accessories

DSP-FTK	Fiber Test Kit
1TS2-ITO Kit	Internetwork Throughput Option
1TS2-PRO Kit	Pro option for OneTouch Series II 10/100
1TS2-xDSL Kit	xDSL option for OneTouch Series II 10/100
N6600/NBP	NiMH rechargeable battery pack
N6600/RA	Remote Adapter Set (#'s 2-6)
Fluke-140	Tone Probe
GOLD-1T-2	OneTouch Gold Service Package
1TS2-RPT	OneTouch Reporter Software Package
1T-HCASE	Hard Carrying Case