



## NetTool™ Inline Network Tester

*Network professionals know what a challenge it can be to resolve a troublesome desktop-to-network connectivity problem. Bad RJ crimp? Wrong e-mail server? Duplex mismatch? Or maybe a bad NIC?*

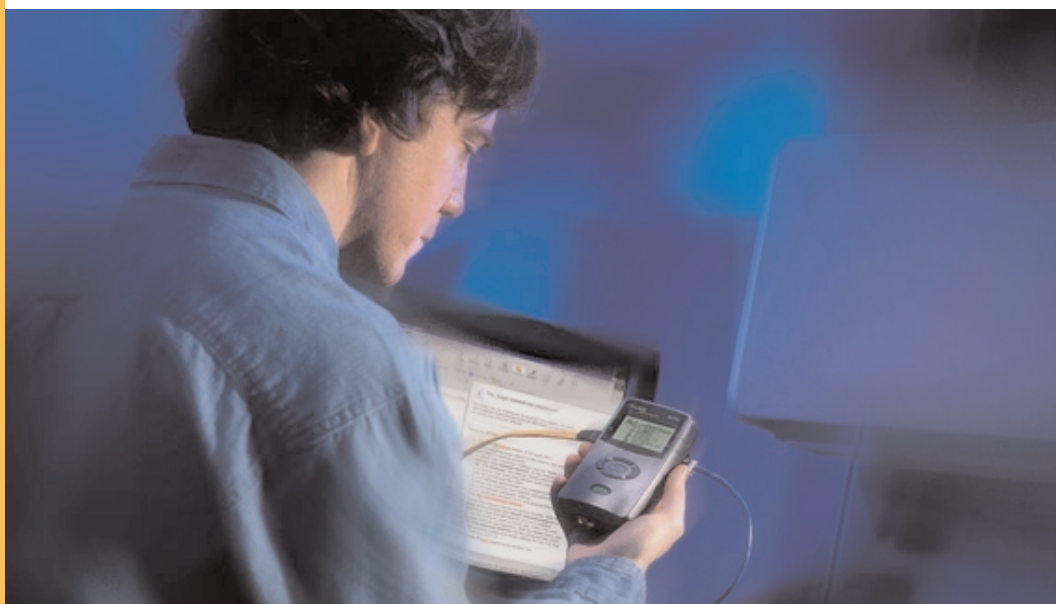
*There are three typical causes of a network connectivity problem:*

- 1. The PC is not properly configured to take advantage of a particular network resource*
- 2. The network resource is not available (or active) on the network*
- 3. There is a cable problem preventing this network connection*

*How do you tell what the problem is? Fluke Networks has put an end to the guessing game with the NetTool Inline Network Tester. NetTool combines cable, network, and PC configuration testing in one palm-sized tool, so you'll have everything you need to quickly resolve even the toughest network connectivity problem.*

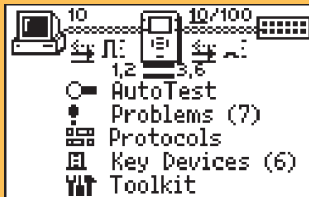


- **Inline Mode** – Connect between two network devices and listen to the traffic between them; detect common connectivity problems like speed and duplex mismatch, link problems, errors and much more
- **Identify PC's Network Configuration** – Review list of servers a PC is configured to use, including services offered, name, IP address and subnet
- **Problems Log** – Alerts you to excessive errors, duplicate IPs, unanswered DNS queries, TCP/IP connection failures, and many more
- **Spot available network resources** – See the IP address, MAC address, subnet, and services offered by active servers, routers and printers
- **Distinguish service offered at a network drop** – Determine whether a drop is offering Ethernet, Phone, Token Ring, or is inactive
- **Verify connection speed, duplex, and utilization** – At-a-glance, see vital link configuration and health information
- **Generate reports that document your troubleshooting** – Download your test results into a PDF file format so you can document your network performance and efficiently escalate problems with hard data
- **Identify protocols being used by the PC and on the Network** – IP, NetWare, NetBIOS, Apple, and other protocols are listed so you can detect protocol mismatches, and isolate unwanted protocols that waste valuable bandwidth
- **Automatically Ping key devices** – with one touch of a button, ping as many as 10 pre-selected devices to verify full network availability
- **Perform basic cable tests** – Check a patch cable or a run of installed Ethernet wiring for length, shorts, split pairs, or opens, including pin-to-pin connection
- **Monitor network health** – See frames sent, utilization, broadcasts, errors, collisions for full or half-duplex 10 or 100 MB connections, with individual counts for both the desktop and network conversations

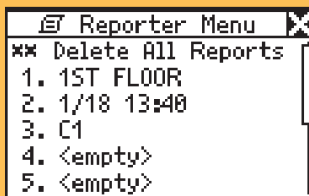
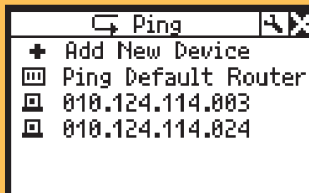


**Vision into the network and PC connection**

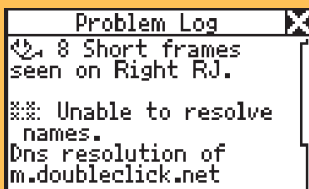
## Inline functionality



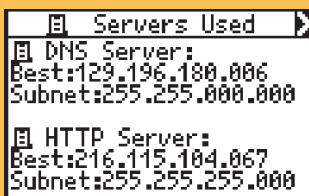
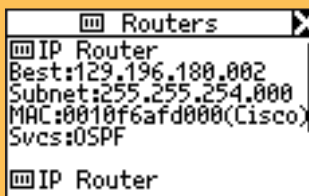
## NetTool Pro Model with ping and reporting



## Minimum training time, maximum productivity



## See network resources



## Product capabilities

### Inline functionality reduces testing time and frustration

Use NetTool to troubleshoot PC and network connections. Connect NetTool inline between a PC and the network and it listens to their network traffic. NetTool analyzes the link on both sides and displays advertised and actual duplex, as well as negotiated speed and link configuration. Once NetTool completes the link analysis, it reports on the PC-to-network conversation while the PC accesses network devices. NetTool displays the PC's network addresses and network servers used, and detects speed and duplex mismatches and

other problems. NetTool reveals how the PC is configured: MAC and IP addresses, servers (DHCP, email, HTTP and DNS), routers and printers used.

### New NetTool Pro Model adds Ping and Reporting

Verify connectivity to other network devices by using IP Ping features. Ping a default router, a single device or a list of up to 10 network devices. By adding Ping, NetTool Pro dramatically shortens the troubleshooting cycle. Pinging a key device such as a router, server, or printer forces it to immediately reveal that the device is active on the network, completing a vital step in the troubleshooting process. NetTool Pro also adds new reporting capabilities so test results identifying network resources and PC configuration can be downloaded and shared with other team members. This network documentation is especially helpful when working as part of a team or escalating the problem to a more experienced troubleshooter. The NetTool Pro Model includes all the Inline features and benefits as well.

### Minimum Training Time, Maximum Productivity

NetTool is so easy to use, even inexperienced technicians can get up to speed quickly with minimal training. And it's priced so every technician can have one. Reducing the time and expense associated with troubleshooting PC and network connection problems, NetTool dramatically increases technician productivity.

## Gold SuperVision Support

Fluke Networks SuperVision Support leads the industry with programs that protect and add value to your investment. When you purchase Gold SuperVision Support, you'll receive unlimited priority technical support seven days a week, 24 hours a day; free software application upgrades; and overnight exchange units so you'll never be without your NetTool.



## Inline and Inline Pro models to match your testing needs.

Both models fit Inline between two network devices, and tell you what's happening between them. The Pro model accelerates your testing by helping you quickly confirm that key devices are active on the network, and also helps you document your work. (Note: the NetTool Inline Model comes with 25-use trials of both Ping and Reporting functions of the Pro Model). The NetTool Inline Network Tester is a must for any network professional who installs or troubleshoots networked PCs.

## FREE holster with registration

Register your NetTool Inline Tester and receive a FREE holster. This durable, soft case protects your NetTool and allows you to hang it up or wear it on your belt.

Registration qualifies you for 60 days or three incidents (whichever comes first) of free telephone support at +1 (800) 283-5853 (U.S. and Canada), 00 800 632 63200, or +44 1923 281 300 in Europe, or +1 (425) 446-4519 from all other countries. Registered customers may also access our Knowledge Base of operation and application articles located on our website.

## Improve Switched Network Visibility with OneTouch Series II Network Assistant



For an in-depth look at your switched network, be sure to ask about another powerful handheld tester for frontline troubleshooting.

## Specifications

<b>Media access</b>	10BASE-T and 100BASE-TX
<b>Identifies</b>	10BASE-T, 100BASE-TX (full or half-duplex), Token Ring (4/16 Mbps), Phone* (tip and ring pins), Inactive terminated and open network cables
<b>Cable Tests</b>	Wiremap, cable length, opens, shorts, and split pairs. Accuracy: ±10% for Cat 5 cable
<b>Ports</b>	2 Shielded Hub/NIC connector (RJ-45).
<b>Serial port</b>	customized 2.5mm "stereo" input jack
<b>Interface</b>	Push button navigation of icon/menu-driven view
<b>Power</b>	Removable alkaline batteries, optional rechargeable NiMH batteries or optional A/C adapter. Approximately 20 hours continuous use with 4 alkaline batteries.
<b>Dimensions</b>	12.5 cm x 7.8 cm x 4.3 cm (5 in x 3 in x 1.7 in)
<b>Weight</b>	210 g (.46 lbs.)
<b>Warranty</b>	One year (extended warranty available).
<b>LED Indicators</b>	One on each side reporting instantaneous utilization, and one on each side reporting link, collisions and errors

\*NetTool can detect telephone signals. However, it is not designed to be used on public telephone networks.

## Ordering Information

Model	Description
NT-IL	<b>NetTool Inline Model</b>
NT-PRO	<b>NetTool Pro Model</b> NetTool Inline and Pro models include NetTool Tester, serial cable, four AA batteries, wiremap adapter, quick reference guide, and CD-ROM containing users manual and NetTool Blaster update utility software.

## Options and Accessories

Model	Description
NT-IL-OPT	NetTool Inline Option Only (Turns an NT into an NT-IL)
NT-PRO-OPT	NetTool Pro Option Only (adds Ping and Reporting Features to any NetTool)
GOLD-NT	NetTool Gold Priority Support
NT-AC-ADAPT	NetTool AC Power Adapter
NT-BATT-CHG	NetTool 900 mA Battery Charger
BATT-AA-NIMH AA	Rechargeable Nickel Metal Hydride Battery Pack

### NETWORK SUPERVISION

**Fluke Networks, Inc.**  
P.O. Box 777, Everett, WA USA 98206  
(800) 283-5853 Fax (425) 446-5043

**Fluke Networks Europe**  
The Metro Centre, Unit 1, Dwight Road  
Watford, Hertfordshire, WD18 9HG U.K.  
00800 632 632 00, +44 1923 281 300  
Fax 00800 225 536 38

**Canada** (800) 363-5853 Fax (905) 890-6866  
**M-East/Africa** +44 1923 281 300  
Fax +44 1923 281 301  
**Other countries call** (425) 446-4519  
Fax (425) 446-5043

**E-mail:** fluke-assist@flukenetworks.com  
**Web access:** <http://www.flukenetworks.com>

©2002 Fluke Networks, Inc. All rights reserved. Pentium is a registered trademark of Intel Corporation. Visio, Windows and NT are registered trademarks of Microsoft Corporation. IPX is a registered trademark of Novell Corporation. NetBIOS is a trademark of International Business Machines Corporation. Printed in U.S.A. 6/2002 1567676 D-ENG-N Rev D