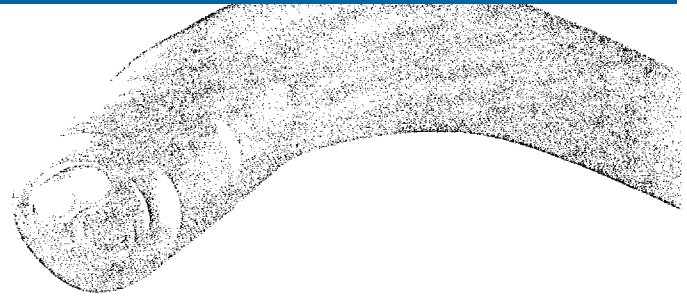




**Advanced Test Equipment Rentals**  
 www.atecorp.com 800-404-ATEC (2832)

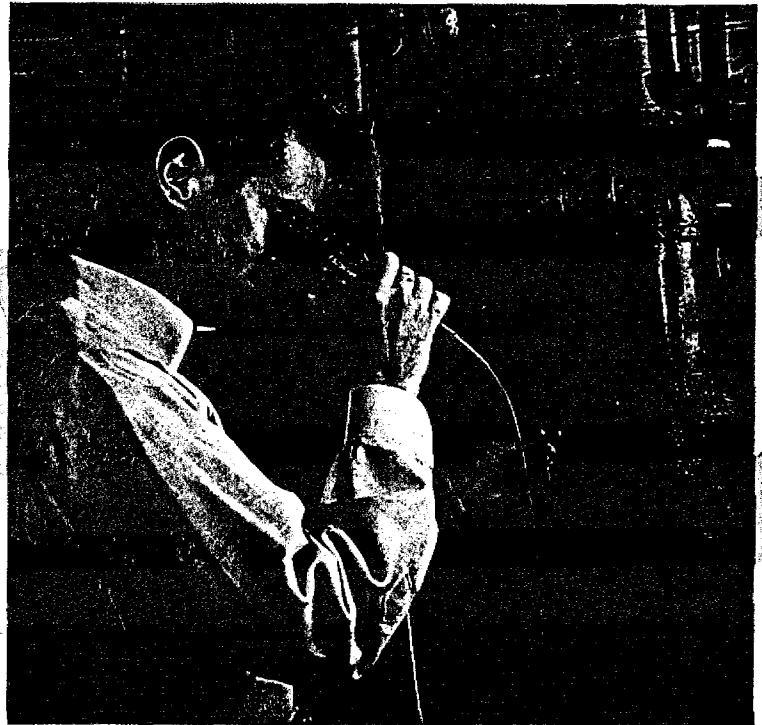
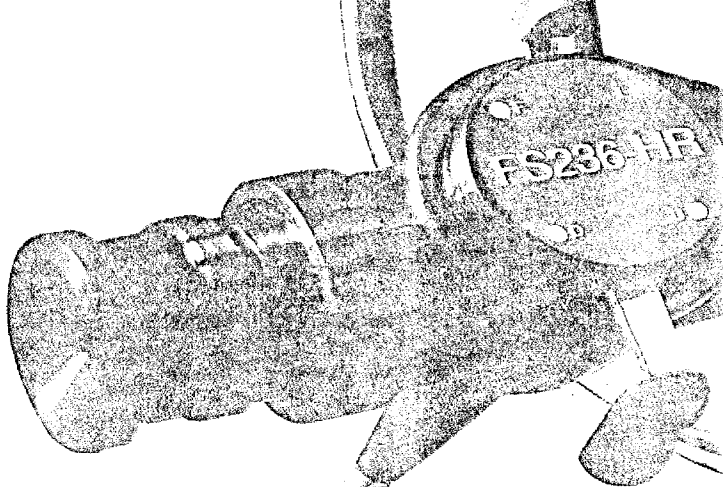


## Applied Fiberoptics: A leader in fiber optic imaging solutions

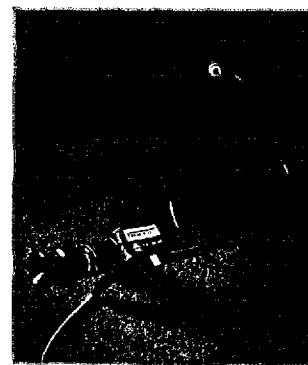
Applied Fiberoptics Inc. is a leading force in the development and marketing of fiber optic imaging solutions for the medical, veterinary and industrial markets. AFI

is the result of the merger of three leading fiber optic illumination and imaging firms with more than 60 years combined experience. The company's headquarters are in "Fiber

Optics Valley" in central Massachusetts, the birthplace of fiber optics. This region of the U.S. continues to lead in the development of advanced fiber optic applications.



64 Technology Park Road, Sturbridge, MA 01566-1262 USA  
 Telephone +1(508)347-5100 • USA Tel 800-225-7486 • FAX +1(508)347-2380 • E-Mail: afiusa@aol.com



Model FS-126

## Applied Fiberoptics: the best choice for industrial needs

---

High-performance industrial fiberscopes from Applied Fiberoptics give you a crucial advantage in quality and safety inspections. These four fiberscopes provide clear, sharp images of inaccessible areas, making remote inspection, evaluation and imaging possible in almost any situation.

AFI fiberscopes offer durable construction and exceptional value in a wide range of diam-

eters and lengths. You control the two-way articulation with a single hand control. A focusing eyepiece enhances high-resolution imaging and accommodates 35mm and video cameras. Standard or high-intensity illumination can be provided through a detachable or integral lightguide. Flexible stainless steel and tungsten shafts resist water, gasoline and jet fuels, simplifying inspection of

liquid-filled vessels.

Applied Fiberoptics is one of the most experienced producers of fiberscopes. Our superior quality and competitive costs make us a key resource for industrial fiber optic tools.



## People working for advanced solutions

---

At Applied Fiberoptics, our skilled, committed engineers and manufacturing technicians strive for innovation. They're never satisfied with a good enough product; if a customer

has a special need or unusual application, our people will work to find the solution. In fact, many of our product advances have resulted from meeting the needs of particular clients.

Applied Fiberoptics gives you more than high-quality products. We give you superior craftsmanship, service and ongoing commitment.



Model FS-155HR



Model FS-200HR



Model FS-236HR

## SPECIFICATIONS\*

Mechanical:	FS-126	FS-155HR	FS-200HR	FS-236HR
<i>Diameter:</i>	.126in. (3.2mm)	.155in. (4.0mm)	.210in. (5.3mm)	.236in. (6.0mm)
<i>Lengths:</i>	20in. (51cm) 40in. (102cm)	20in. (51cm) 40in. (102cm)	40in. (102cm)	40in. (102cm) 60in. (153cm) 80in. (203cm) 108in. (274cm)
<i>Articulation:</i>	130°up/100°down	120°up/down	120°up/down	120°up/down
<i>Bend radius, shaft:</i>	2.0in. (50mm)	.80in. (20mm)	.80in. (20mm)	1.0in. (25mm)
<i>Construction, shaft:</i>	Urethane	Polyimide coated stainless steel braid	Polyimide coated stainless steel braid	Tungsten braid
† <i>Environmental- Shaft is immersible in:</i>	Water, JP4, JP5, Jet A, Gasoline	Water, JP4, JP5, Jet A, Gasoline	Water, JP4, JP5, Jet A, Gasoline	Water, JP4, JP5, Jet A, Gasoline
<i>Operating temperature:</i>	32°F to 130°F (0°C to 55°C)	32°F to 140°F (0°C to 60°C)	32°F to 140°F (0°C to 60°C)	32°F to 140°F (0°C to 60°C)
<i>Storage temperature:</i>	32°F to 130°F (0°C to 55°C)	-30°F to 160°F (-34°C to 71°C)	-70°F to 160°F (-57°C to 71°C)	-70°F to 160°F (-57°C to 71°C)
<b>Optical:</b>				
<i>Eyepiece:</i>	B-style	B-style	B-style	B-style
<i>Lightguide length:</i>	90in. (229cm)	60in. (152cm)	60in. (152cm)	60in. (152cm)
<i>Depth of field:</i>	.20in - 2.0in. 5mm-50mm	.24in - 4.0in. 6mm-100mm	.31in - 3.1in. 8mm-80mm	.40in - 4.0in. 10mm-100mm
<i>Field of view minimum:</i>	55°	45°	55°	60°
<i>Eyepiece magnification:</i>	30X	30X	25X	25X
<i>Dioptr range:</i>	+4 to -5	+4 to -8	+4 to -8	+4 to -8
<b>Includes:</b>				
	Fiberscope	Fiberscope (Spfy forward or RA view)	Fiberscope	Fiberscope
	Detachable lightguide	Integral lightguide	Integral lightguide	Integral lightguide
	Light guide adapter (specify light source)	Light guide adapter (specify light source)	Light guide adapter (specify light source)	Light guide adapter (specify light source)
	Eyecup	Eyecup	Eyecup	Eyecup
	Lens cap	Lens cap	Lens cap	Lens cap
	Lens cleaner	Lens cleaner	Lens cleaner	Lens cleaner
	Carrying case	Carrying case	Carrying case	Carrying case

**Required, not included:** Halogen illuminator. *Recommend: Brite Lite Xenon illuminator for video and camera applications.*

**Options:** Brite Lite Xenon illuminator. Competitive light source adapters, 35mm camera adapter, video camera adapter, 90° prismatic head (FS-200HR, FS-236HR).

\*Because we continually upgrade our products, specifications are subject to change without notice.

†Environmental shaft immersible in other solutions. Please inquire.



## **MODEL 1150 ILLUMINATOR**

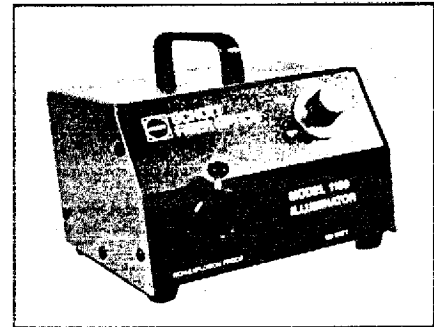
The Schott Fiber Optics Model 1150 Illuminator is designed for a wide range of fiber optic applications. The compact Model 1150 illuminator operates virtually noise-free with less vibration than most illuminators available today. The Model 1150 is designed for use with EJA A.N.S.I. Quartz Halogen Lamps. The Model 1150 reflects Schott's commitment to excellence in fiber optic lighting.

### **Specifications**

Height	4.87 in. (12.4cm)
Width	7.00 in. (17.8cm)
Depth	6.87 in. (17.5cm)
Weight	6.00 lbs. (2.73kg)
Lightguide Receptacle	0.50 in. Diameter
Power Supply	110V 160Hz at 2 amps
Bulb	EJA (ANSI Code)
Average Life	40 Hours

All Model 1150 Illuminators come with one EJA bulb (average life 40 hours). Replacement bulbs can be ordered under the following part numbers:

EJA X404903AB Package of two



1150 ILLUMINATOR