

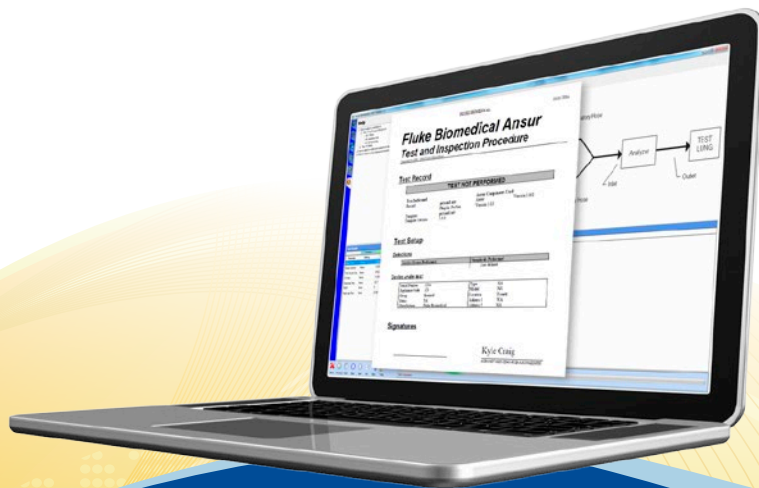


**FLUKE®**

**Biomedical**

# Ansur Test Automation Software

## Technical Data



Ansur Test Automation software transforms the way test data is collected, measured and stored to mitigate risk and manage regulatory compliance. It is the premier digital solution for hospital quality-assurance (QA) professionals to maximize productivity and increase profitability. This software standardizes work and reduces test time to both increase operational efficiency and reduce human error in QA regulatory and preventative-maintenance testing.

Ansur offers the ability to test multiple devices simultaneously and automatically assesses pass/fail results against test limits for compliance to safety standards and hospital-specific QA protocol. Test results are captured electronically and stored digitally in version-controlled records in CMMS or alternative databases of choice. Data can be managed based on user authorization levels. Digital data can then be used for trend analysis to predict service needs, minimize equipment downtime, and provide justification for unique PM schedules to meet the requirements of worldwide regulatory groups like the Joint Commission, IEC and others.

### Key features:

- Allows creating and managing custom test protocols electronically to eliminate dependence on service manuals
- Guides users through stepwise testing process to ensure standardized testing and to minimize training
- Generates test report (PDF or MTR) per requirements with needed level of data to ensure compliance
- Enables the use of personalized pictures, illustrations and graphs to facilitate proper testing with ease
- Automatically assesses pass/fail against test limits specified by global standards or organizations
- 21CFR Part 11 compliant. Users can create their own signature and sign templates and results. (This feature can be disabled)
- Stores complete version-controlled test record and data electronically
- Authorization levels can be assigned to manage level of access to software. Levels include User, Author and Administrator (This feature can be disabled)
- Reduces test time per medical device, tests multiple devices simultaneously, and performs multiple PM tests in a single procedure
- Offers easy data traceability with electronic archival and printing of detailed records
- Ensures test procedures and time are uniform and thus predictable with both ready-to-use and customized test templates
- Data extraction offers trending and analysis and reporting capability

## Technical specifications

### PC Hardware Requirements

- Intel® Pentium® 4 2.0 GHz FSB @400 MHz or faster processor
- 512 MB of RAM
- Microsoft® operating system: Windows® 2000, Windows XP, Windows Vista, Windows 7, Windows 8, or Windows 10
- 50 MB of available hard drive for software
- Hard drive space (from 100 k to several megabytes) for result and template files
- .Net framework version 3.5 or newer

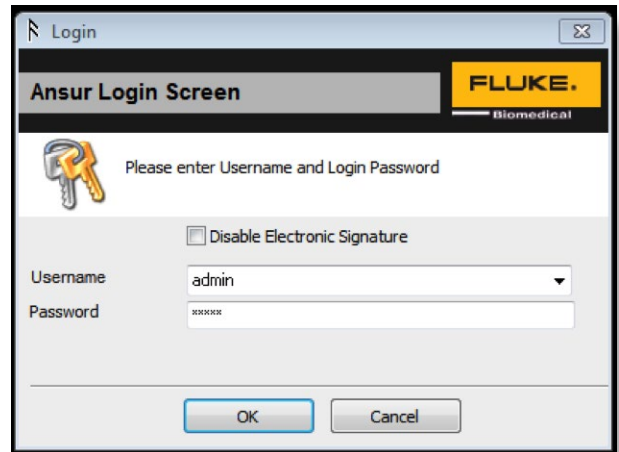
### PC Software Requirements –With Electronic Signature

This software is required on the central PC (for a network configuration) or each PC (for a non-networked configuration):

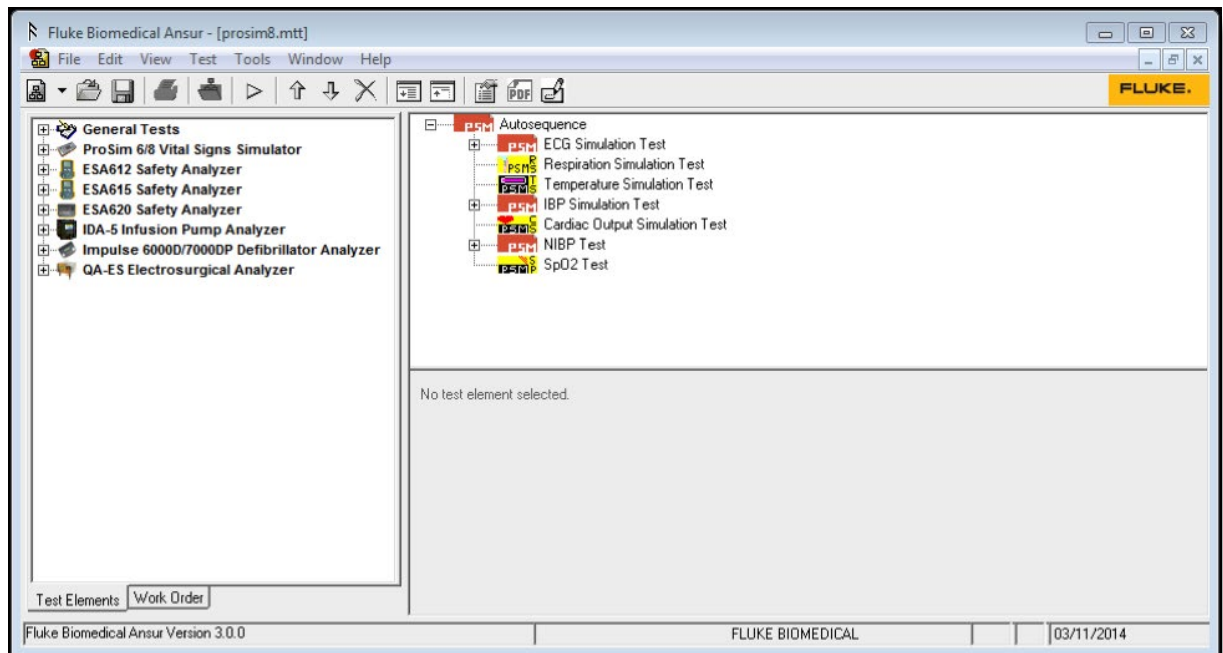
- Microsoft SQL® Server 2012
- Ansur Executive Server

### Other requirements

- License key for each Fluke Biomedical simulator/ analyzer plug-in
- One or more Ansur-compatible Fluke Biomedical simulators or analyzers



Ansur software login screen



Ansur software test templates

## Ordering information

Ansur Executive must be installed before any Plug-ins can be used. Each Plug-in is exclusive to a specific Fluke Biomedical Device. One Plug-in license is valid for one computer. For multiple computers, multiple licenses for the required Plug-In must be purchased.

### Plug-Ins available

Purchase the Plug-Ins you need, and then add more Plug-Ins or licenses as you acquire new Fluke Biomedical analyzers and simulators.

Item#	Model	Item Description
2462982	11000	Ansur Test Executive, Main Program
2463002	11050	Ansur Test Software, QA-ST Plug-in
2463016	11200	Ansur Test Software, QA-90 Plug-in
2463033	12712	Ansur Test Software, Pro-soft DAEG, Test Protocol Software
2461775	13600	Ansur Test Software, QA-40M/45 Plug-in
2461979	15200	Ansur Test Software, QA-IDS/LAGU Plug-in
2462024	16220	Ansur Test Software, QA-VTM Plug-in
2462644	17520	Ansur Test Software, QA-1290 Plug-in
2556755	20200	Ansur Test Software, ESA601 Plug-in License
2755836	ANSUR BP PUMP 2	Ansur Test Software, BP Pump 2 Plug-in License
3454829	ANSUR ESA612	Ansur Test Software, ESA612 Plug-in License
4165219	ANSUR ESA615	Ansur Test Software, ESA615 Plug-in License
3116463	ANSUR ESA620	Ansur Test Software, ESA620 Plug-in License
3935677	ANSUR IDA-4 PLUS	Ansur Test Software, IDA-4 Plus Plug-in License
4354503	ANSUR IDA-5	Ansur Test Software, IDA-5 Plug-in License
2817641	ANSUR IMPULSE 4000	Ansur Test Software, Impulse 4000 Plug-in License
3091370	ANSUR IMPULSE 7000	Ansur Test Software, Impulse 6000D/7000DP Plug-in License
2817203	ANSUR INDEX 2	Ansur Test Software, Index 2 Plug-in License
4034627	ANSUR PROSIM 6/8	Ansur Test Software, Prosim 6/8 Plug-in License
2461802	ANSUR QA-ES	Ansur Test Software, QA-ES Plug-in License
2817226	ANSUR QED 6	Ansur Test Software, QED-6 Plug-in License
3337356	ANSUR TNT 12000	Ansur Test Software, TNT 12000 Plug-in License
3837485	ANSUR VT	Ansur Test Software, VT Plus/VT Mobile Plug-in License

### Fluke Biomedical Regulatory Commitment

As a medical test device manufacturer, we recognize and follow certain quality standards and certifications when developing our products. We are ISO 9001 and ISO 13485 medical device certified and our products are:

- CE Certified, where required
- NIST Traceable and Calibrated
- UL, CSA, ETL Certified, where required
- NRC Compliant, where required

### Fluke Biomedical.

*Trusted for the measurements that matter.*

#### Fluke Biomedical

6045 Cochran Road  
Cleveland, OH 44139-3303 U.S.A.

#### Fluke Biomedical Europe

Science Park Eindhoven 5110  
5692EC Son, The Netherlands

#### For more information, contact us:

In the U.S.A. (800) 850-4608 or  
Fax (440) 349-2307  
In Europe/M-East/Africa +31 40 267 5435 or  
Fax +31 40 267 5436  
From other countries +1 (440) 248-9300 or  
Fax +1 (440) 349-2307  
Email: [sales@flukebiomedical.com](mailto:sales@flukebiomedical.com)  
Web access: [www.flukebiomedical.com](http://www.flukebiomedical.com)

©2015-2017 Fluke Biomedical.  
Specifications subject to change without notice.  
Printed in U.S.A. 3/2017 6004677b-en

**Modification of this document is not permitted without written permission from Fluke Corporation.**