

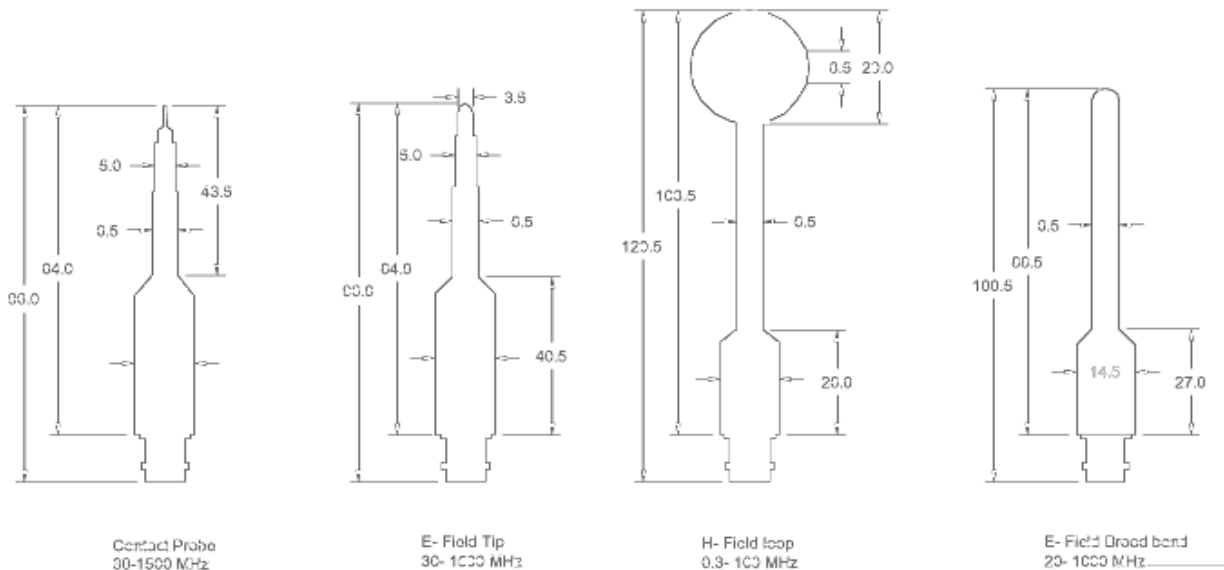
## Specifications

Probe	Loop	Broadband	Fine Tip	Contact Tip
Frequency (MHz)	0.3-100	20 -1000	30-600	300-1500
Type	H-field	E-field	E-field	E-field
Connector	BNC (f)	BNC (f)	BNC (f)	BNC (f)
Dielectric breakdown	1 kV	1 kV	1 kV	1 kV
DC input at the tip	N/A	N/A	N/A	50 VDC
Dimensions	see below	see below	see below	see below
Weight	4 oz / 113 g	4 oz / 113 g	4 oz / 113 g	4 / 113 g

### Optional Preamplifier

Model:	PAP-501
Frequency Range:	10 MHz -1000 MHz
Nominal Gain:	20 dB ± 1
Pout @ 1 dB comp:	+ 6 dBm
Typical Noise Figure	6 dB
Output Impedance:	50 Ohm
I / O Connection:	BNC (f) input, BNC (m) Output
Power Input:	6 VDC, 500 mA
Power input plug type:	2.1 (ID) x 5.5 (OD) center pin positive.
Weight:	1 lb. (0.45 kg)
Dimensions (L x W x H):	83 mm x 42 mm x 25 mm (3.27 " x 1.65" x 0.985")

### Mechanical Outline



U.S. Patent # 5,132,607  
 Dimensions are given in inches  
 All values are typical unless specified  
 Specification are subject to change without notice