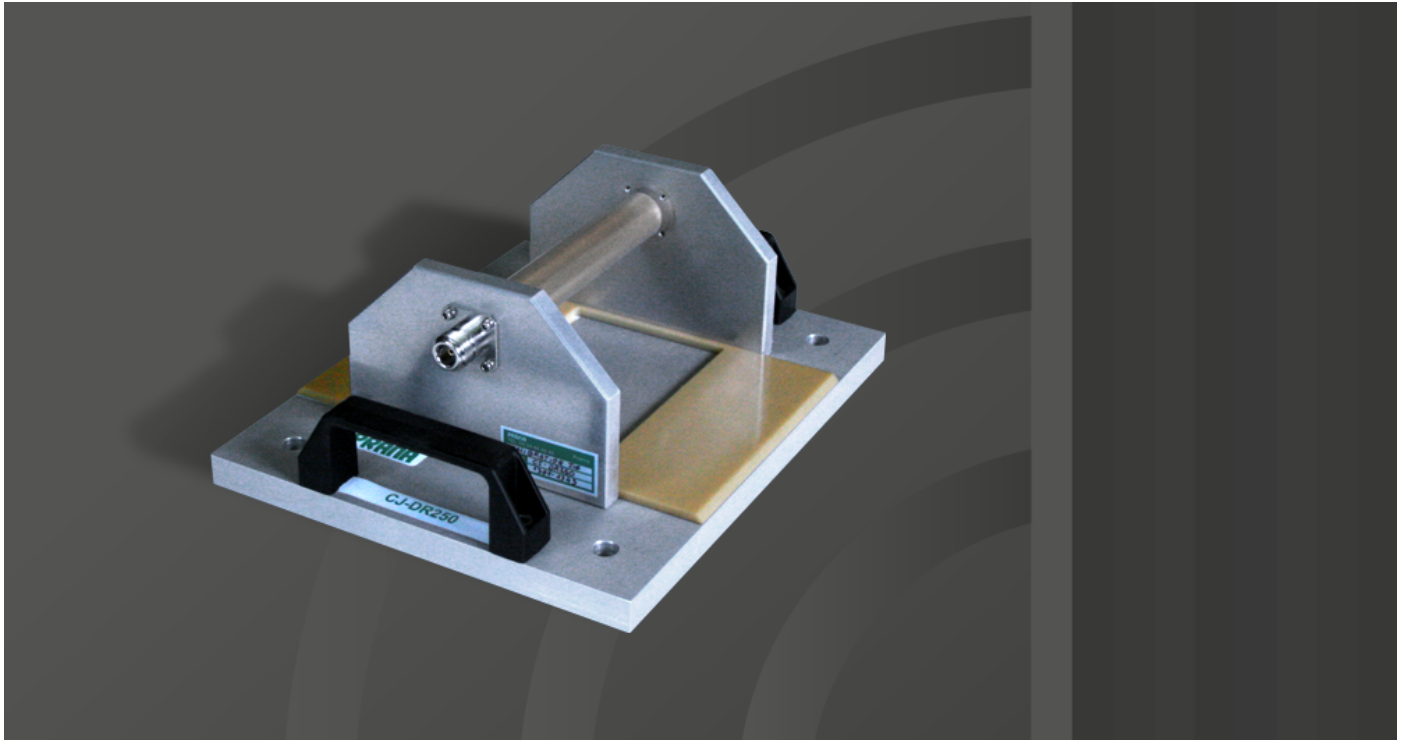




CJ-DR250

Accessories: / 500 W CW



Prana CJ-DR250

- Calibration JIG for IP-DR250
- N connectors

Accessories

- CJ-DR250 => 500 W CW
- IP-DR250 => 500 W CW

Maintenance

- Rapid diagnostic
- Minimal downtime
- Contract for preventive and corrective maintenance available

Applications

- EMC standards covered:
 - DO 160 D
 - Mil STD 461
 - Automotive standards: PSA, Renault, Ford, Daimler Chrysler...
 - ISO 11452-4
 - SAE J1113-4
 - ...

Sold and serviced in North America by:



8526 Virginia Meadows Drive
Manassas, VA 20109
Ph: (703) 365-2330
www.hvtechnologies.com
emcsales@hvtechnologies.com

CJ-DR250

Accessories: / 500 W CW

Specifications

Frequency Range	0.01 - 400 MHz
Window diameter	43.8 mm
RF input connector	Type "N" Female
Maximum input Power	500 W

Sold and serviced in North America by:



8526 Virginia Meadows Drive
Manassas, VA 20109
Ph: (703) 365-2330
www.hvtechnologies.com
emcsales@hvtechnologies.com

CJ-DR25031JAN2014 - Electrical and Mechanical Specifications subject to change without notice.

PRANA R&D - 52 Avenue de la Libération CS 10161 - 19361 MALEMORT Cedex - France
Tel : 33(0)5 55 86 49 40 - Fax : 33(0)5 55 86 49 45



www.prana-rd.com
Made in France