

ARCO 400

Universal test set for recloser controls



Smart and rugged testing solution for

Coping with modern recloser functions

Technology has significantly improved overhead distribution networks by reducing customer-minutes of interruptions through the use of modern reclosers.

While the latest control technology brings advanced functionality, including distribution automation capabilities, testing all settings to ensure proper operation has become a challenge.

What if controller testing can be done in only a few minutes?

ARCO 400, the lightweight and easy to use test set, is the universal solution for all types of recloser controls. Connecting the test set to the recloser control has never been easier: A single plug on the test set combined with intelligent recloser-specific ARCO 400 smart controller adapters allow a flawless connection within seconds. This saves time and avoids faulty wiring during the test setup.



USB and Ethernet interfaces

Changeable dust filters

LEDs indicating breaker positions for each phase

Safe and touch-proof combined test interface:
3 x 12.5 A
6 x 8 V (6 x 150 V optional)
6 binary inputs
9 binary outputs



all types of recloser controls

Simple plug-and-play functionality checks

ARCO 400 provides the fastest and easiest way to perform simple trip/close checks. Every smart controller adapter includes a chip through which ARCO 400 automatically recognizes the specific adapter and, once connected, configures itself for the test procedure. This allows immediate basic trip and close functionality checks via the controller's push buttons – without the use of any software.

All recloser control functions covered

ARCO 400 is specifically designed to simulate the complete primary recloser component for the testing process. It enables three-phase testing of all types of recloser controls in both laboratory and field environments.

High testing flexibility

The accurate 3-phase 12.5 A current amplifiers enable both testing at very low amplitudes and the testing of functions with high fault values.

Conventional potential transformers or capacitive and resistive voltage sensors are simulated by the 6-phase voltage amplifiers and are available in either an 8 V or 150 V range. This allows testing of any voltage based function.

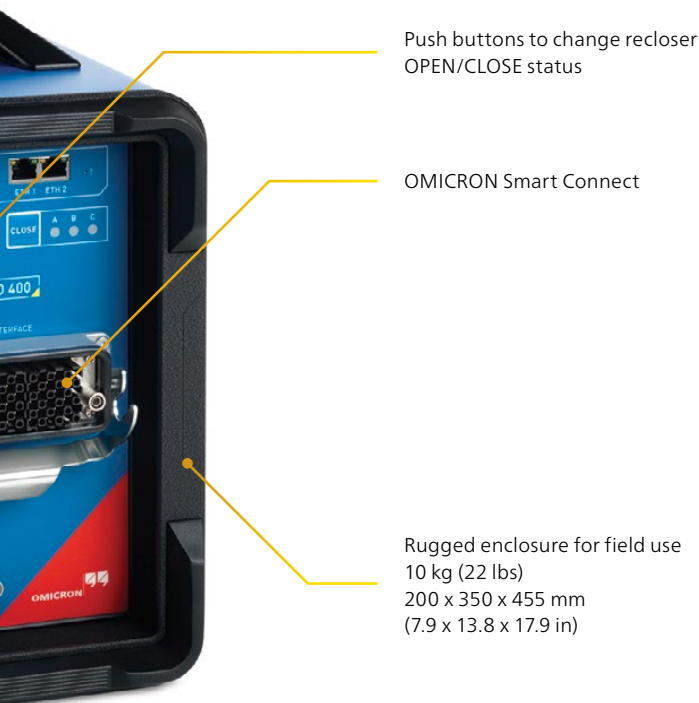
The test set is equipped with six binary inputs and nine binary outputs to measure trip and close commands and simulate circuit breaker auxiliary contacts.

Software based control for more functionality

ARCO 400 is operated by the ARCO Control software which can be used for simple SCADA metering checks or for the testing of any protection function, including frequency based protection functions used for load-shedding.

With the ReCoPlan software, testing procedures are standardized by creating test plans, which also reduce testing time and enable comprehensive reporting.

The wireless connection between ARCO 400 and a controlling laptop or tablet allows remote flexible operation of the test set.



Your benefits

- > Plug-and-play solution for quick and easy testing of any recloser control
- > Rugged design and usable in harsh weather conditions
- > Compact and lightweight
- > GPS synchronized automated distribution scheme tests
- > Easy-to-use software to wirelessly control ARCO 400, no special training required

www.omicronenergy.com/ARCO400

Designed to fit specific requirements

Manual control and test templates

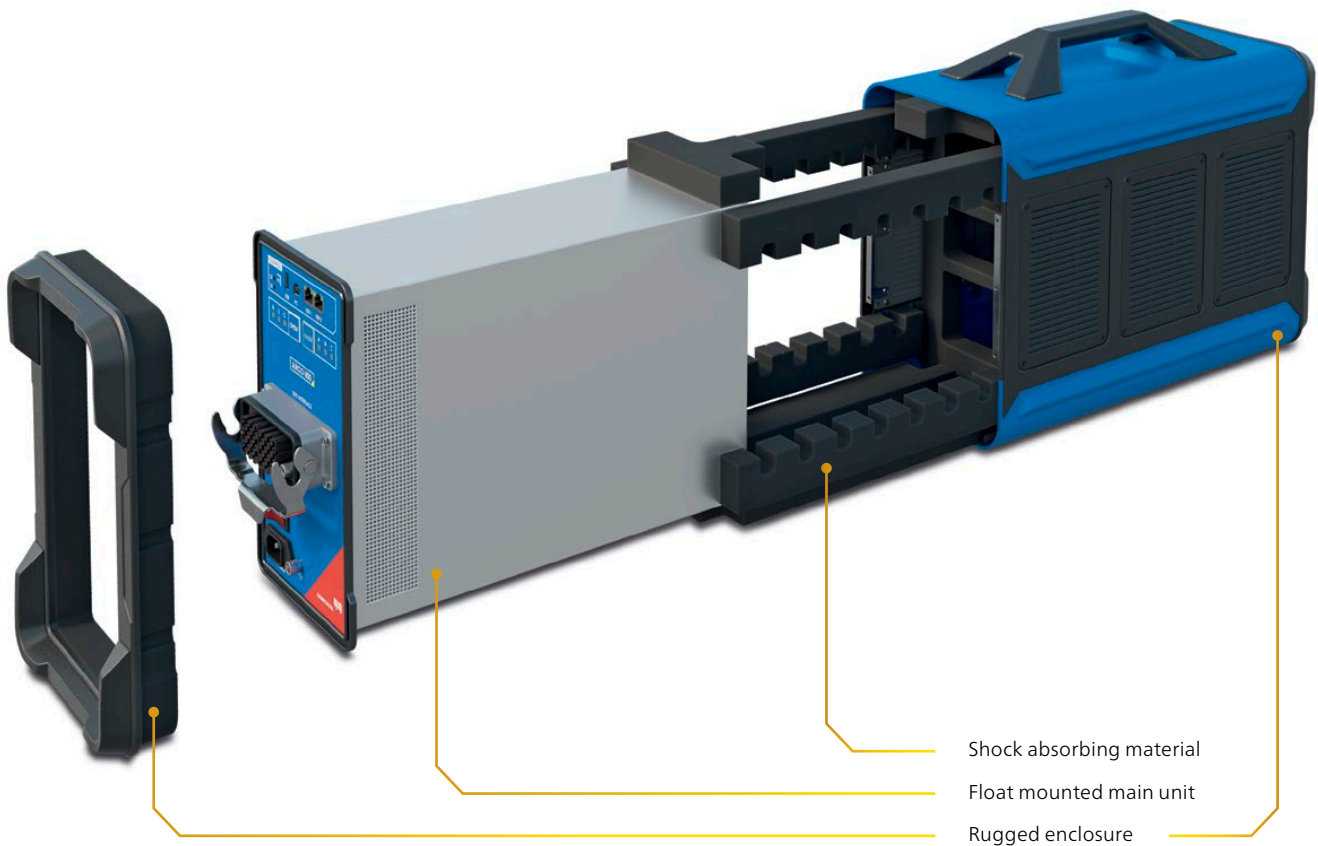
Specific recloser and sectionalizer test modules in the ARCO Control software allow the convenient testing of any controller function. To meet your company's test requirements, ARCO 400 also enables manual testing of the controller. These tests are performed through either the given test modules or by executing a test plan predefined in ReCoPlan, which saves time and reduces complexity during site testing.

Distributed scheme testing

Several ARCO 400s can be time-synchronized to GPS and controlled simultaneously with RelaySimTest. This enables complete testing, including communication channels, by performing distribution automation scheme tests.

Rugged design for outdoor usage

Testing in the field demands the test set to be rugged and usable in harsh weather conditions. ARCO 400's robust enclosure makes it the ideal test set for any bucket truck. Special shock absorbing material lining the enclosure protects the float mounted main unit from many types of vibrations, shocks, or drops.



Plug-and-play setup with OMICRON Smart Connect

Safety first

The interface on ARCO 400, extension cable, and smart controller adapter leading to the test set are safe to touch. This is possible due to a new connector concept where no blank pins are exposed on either side.

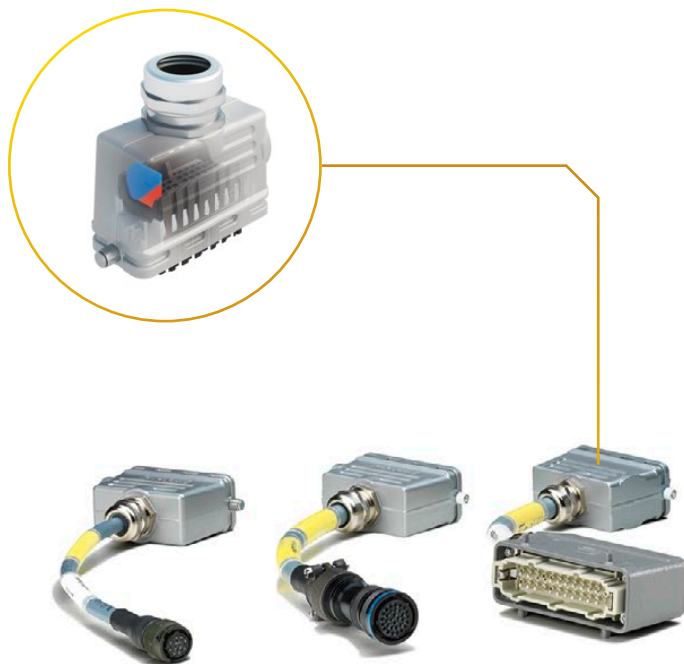
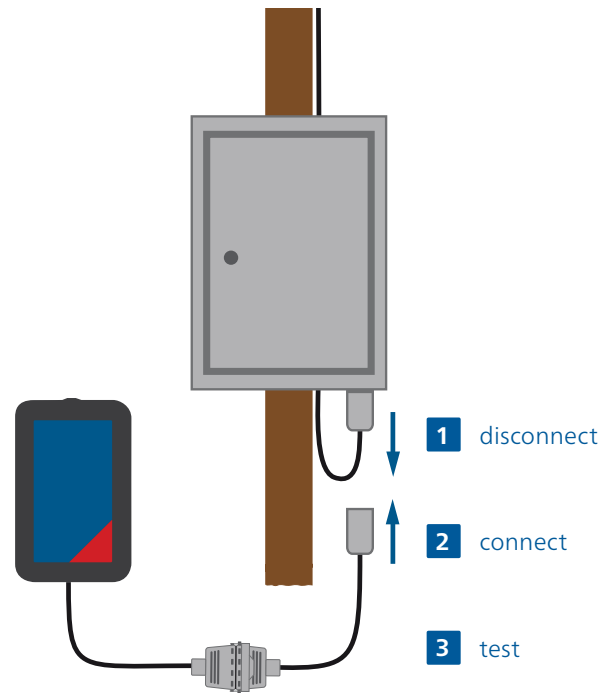
Automatic detection by the ARCO Control software of a missing ground connection to the test set avoids potential dangers. Additionally the software indicates when live currents and voltages are being output.

Convenient and adaptable

The ARCO Control software allows a quick start when executing injection tests.

You can choose from a wide range of smart controller adapters for testing various recloser and sectionalizer controls – all equipped with OMICRON Smart Connect technology.

Extension cables offer a standard length of 7 m/23 ft to bridge the distance between the test set and the controller.



ARCO Control

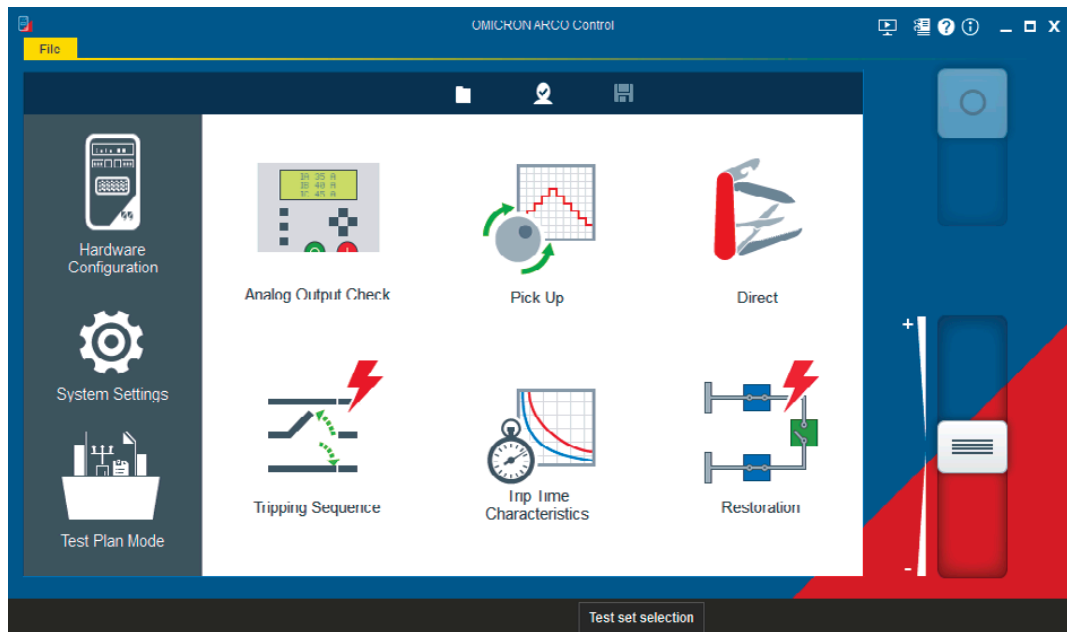
Easy testing of controllers

ARCO Control, specifically designed for testing recloser and sectionalizer controls, is an easy to use software for ARCO 400. Commissioning and maintenance tests are easily performed through the software's comprehensive test tools.

The software is configured to allow quick testing of recloser and sectionalizer controls in the field.

The navigation menu guides you through each test sequence with step by step instructions. The test results are obtained quickly and reliably, and can then be exported for reporting purposes.

ARCO Control runs on a Windows Laptop/PC or Android tablet.



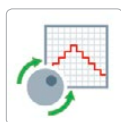
Test tools provide a wide range of functions:



The **Test Plan Mode** allows the execution of test plans created via ReCoPlan software.



Analog Output Check allows the output of analog test quantities to perform simple wiring checks.



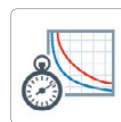
The **Pick-Up** tool is used to test the thresholds of recloser and sectionalizer control functions.



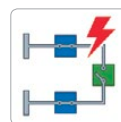
The **Direct** tool enables individual manipulation of magnitudes, phase angle and frequency of all ARCO 400 outputs for manual testing, troubleshooting, and diagnostics.



The **Tripping Sequence** tool tests the functionality of the device by simulating a full sequence to lockout, a successful reclose or coordination with a downstream device.



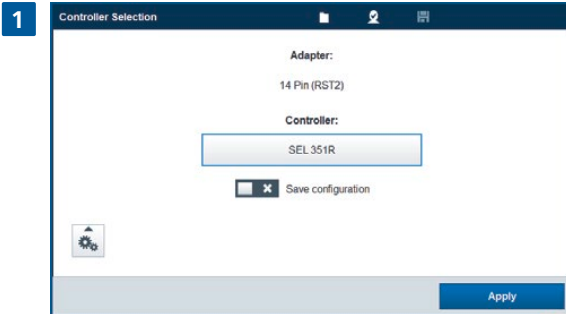
The **Trip Time Characteristics** tool checks the operating characteristics and the switching logic between a fast and slow curve.



The **Restoration** tool allows testing of voltage controlled functions used in automated distribution restoration schemes.

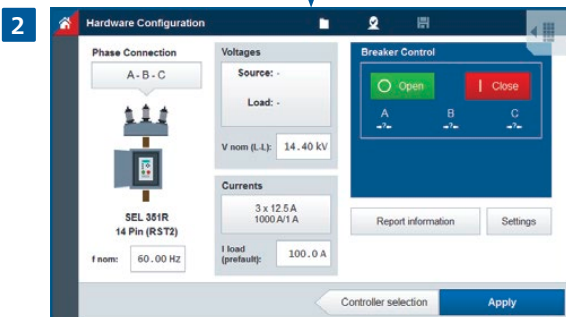
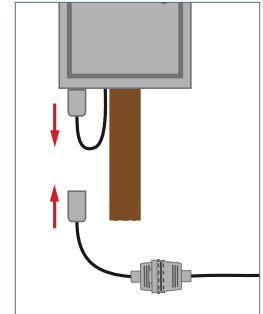
Plug-and-play start up procedure

Starting a new test is both easy and intuitive. Simply connect an ARCO 400 smart controller adapter and extension cable to ARCO 400 and the hardware will configure itself by reading the configuration associated with the smart adapter. After selecting the controller to be tested, the user has the option to input specific test data such as location, tester's name and report information. Tests can then be started right away by selecting the desired test tool.



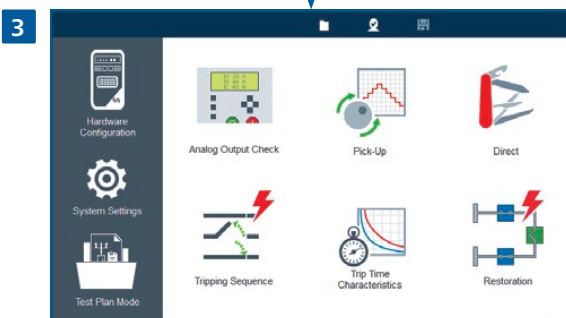
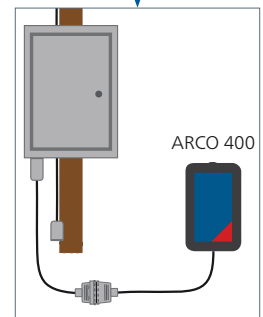
Plug in adapter

The software recognizes the smart controller adapter once it is connected. Only the controller to be tested has to be selected from the provided list.



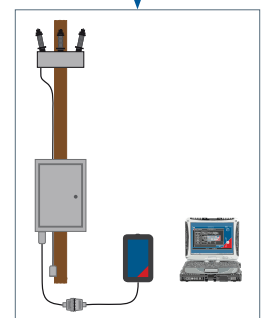
Hardware configuration

ARCO 400 amplifiers and information such as CT ratio are automatically set in the software based on the controller selection. Pre-set nominal values can be altered if required. General data can be added in the Report Information section (e.g. tester, location).



Starting a test

Select the desired test tool in the main menu to test the functions in the controller.



ARCO Control test examples

Tripping Sequence test tool

With this test tool, the functionality of recloser and sectionalizer controls is easily ascertained for full sequence, lockout, and automatic reclosing sequences. Sectionalizer testing simulates the trip-close sequence of an upstream device. The proper timing of the recloser or sectionalizer control is measured and included in the report.

Application mode

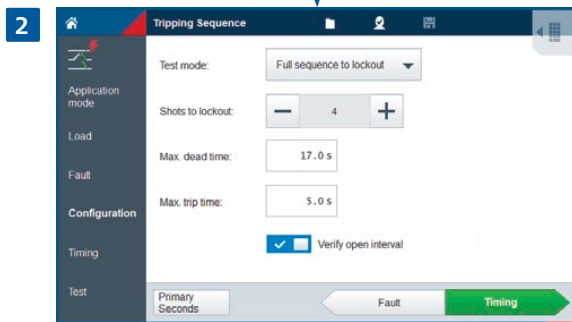
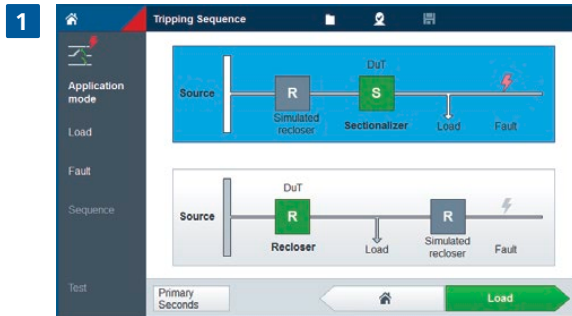
There are two different applications that can be tested with the Tripping Sequence test tool (recloser or sectionalizer). When selecting the DUT (device under test), the software also determines which additional units will be involved in testing. For example, the test of a recloser with a simulated downstream recloser is selected.

Configuration

The type of test sequence is defined in the configuration menu. Selectable options are Full Sequence to Lockout, Successful Reclose and Co-ordination with Downstream Recloser.

Test screen

All configured test parameters are summarized and clearly displayed. The test results are automatically assessed once the test has finished.



Trip Time Characteristics test tool

The Trip Time Characteristics test tool checks both the operating characteristics of the recloser control and the switch logic between the fast and slow curve which occurs when a fuse-saving scheme is applied. For this, a complete test sequence is executed up to the lock out of the controller.

To test the tripping behavior of a single curve only, repeated test shots can be sent to the controller in the Trip Only mode.

Curves

The following parameters are set in this menu:

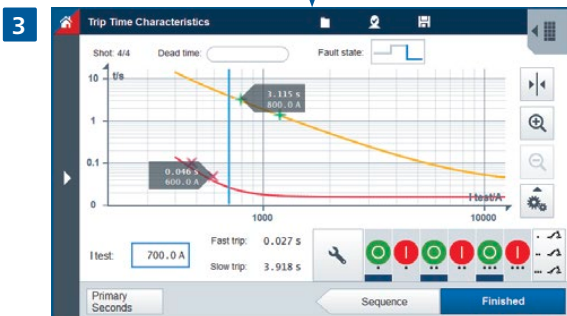
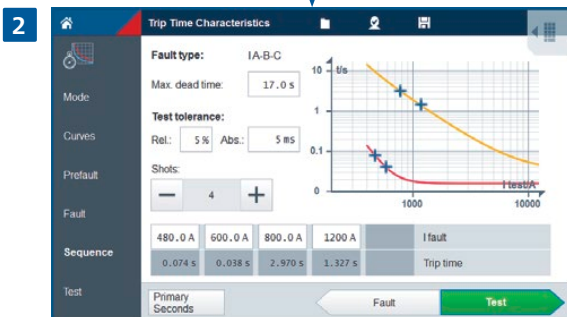
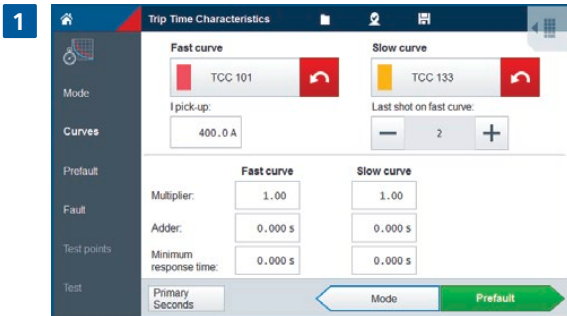
- > The two curves to be tested
- > The optional time additions
- > The number of test shots on the fast curve
- > The current pickup value

Sequence

The test is performed as a sequence. A test sequence consists of a fixed number of shots with pre-defined currents to test the timing of the curve at different points.

Test screen

Once the sequence is completed with all test shots, a graphic displays the shots recorded and compares them to the nominal trip times. Actual trip times are displayed for comparison and an assessment is automatically made based on defined tolerances.



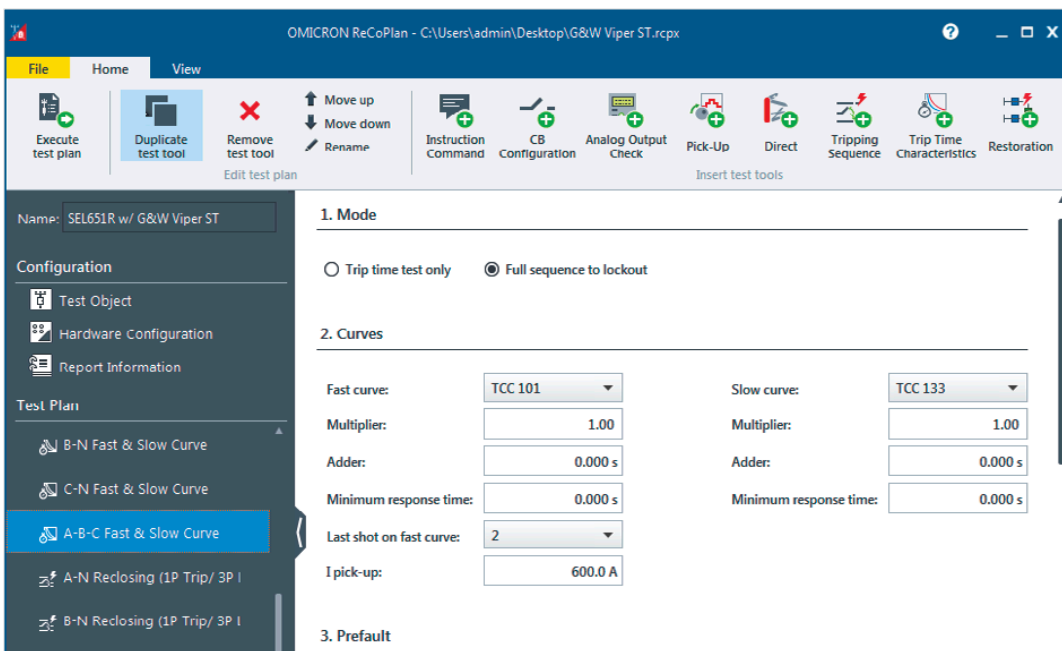
ReCoPlan

Guided testing workflow

Standardized testing procedures can easily be developed through test plans which specify a predefined workflow of tests for recloser and sectionalizer controls.

Our PC-based software ReCoPlan allows you to create test plans using the available tools of ARCO Control. One additional feature with ReCoPlan is the Instruction Command which provides additional or specific information to the tester on what the test plan is to accomplish or whether an interaction is needed from the tester to complete the test procedure.

After designing the test plan in ReCoPlan, it can be saved and executed using the ARCO Control software.

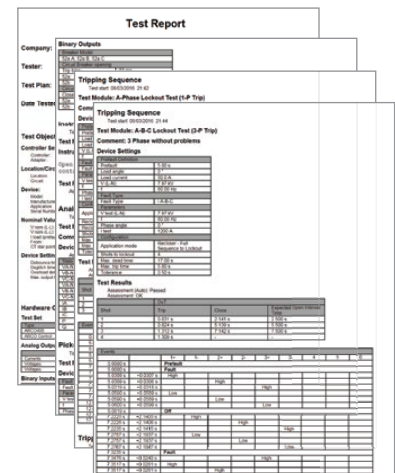


1 Create a new or open an existing test plan with ReCoPlan

Select manufacturer and controller adapter, add test tools to the plan and enter test values.

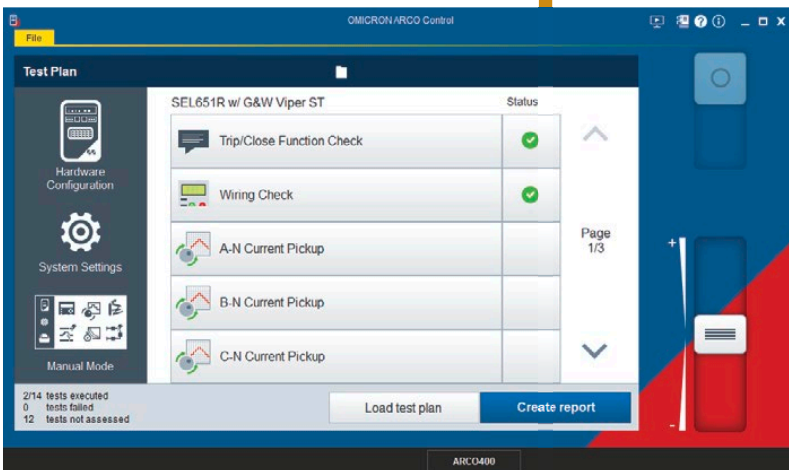
3 Get test results

Generate detailed test reports in ReCoPlan complying with the NERC (North American Electric Reliability Corporation) requirements and store or print them.





Distribute test plan or directly execute it from ReCoPlan *



- 2 Execute in ARCO Control
Run tests by selecting the pre-defined test tools.

Your ReCoPlan benefits

- > Fast and easy creation of test plans including pre-defined test values
- > Standardize testing procedures
- > Reduce test time
- > Include working instructions
- > One combined report

* If this is on a different computer, send the test plan file via email or transfer it via SD card to ARCO Control

Compliance requirements

Grid operators all over the world need to meet national compliance requirements for maintenance and documentation of the protection system. One of the hardest standards is the NERC (North American Electric Reliability Corporation) PRC-005-6.

The new NERC PRC-005-6 standard

In North America, the NERC defines test and maintenance requirements for protection systems.

The new PRC-005-6 reliability standard requires the development of a comprehensive protection system including maintenance and testing processes, replacing PRC-005-5. To be technically valid, maintenance programs require documentation showing how the verified protection system segments overlap so that no segment is left unverified.

Focus on documentation requirements

The new standard alters the process of documentation of monitoring, testing, and maintaining distribution systems, underfrequency load-shedding systems and undervoltage load-shedding systems. This includes protection systems, such as automatic reclosing and sudden pressure relaying, which affect the reliability of the Bulk Electric System (BES).

ARCO 400 provides functionality that supports all PRC-005-6 requirements.

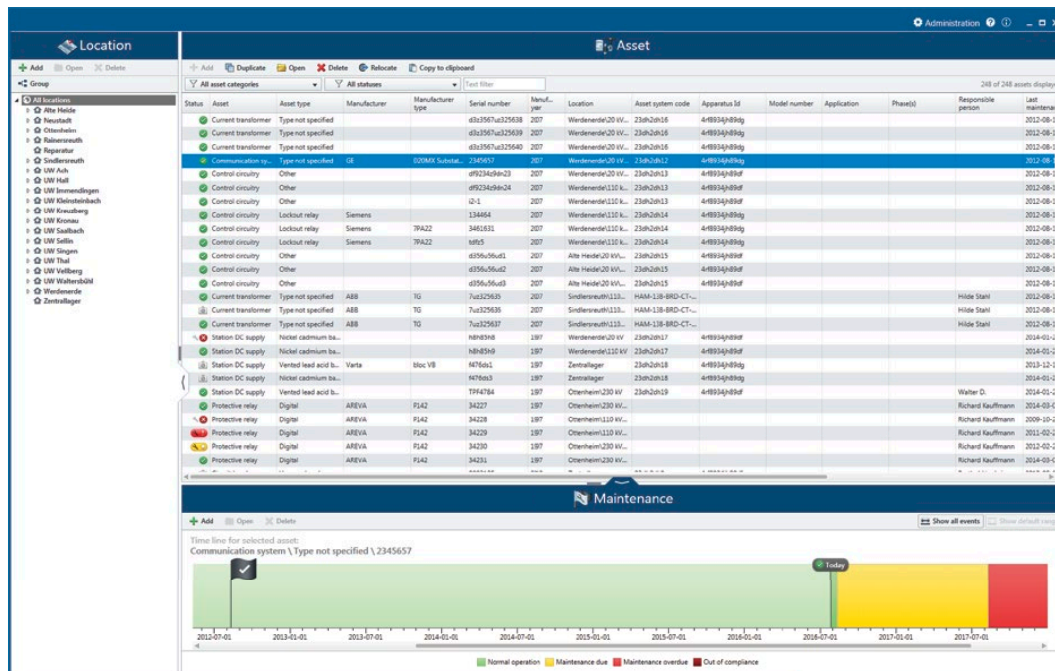
Comply with documentation requirements

Offering user-friendly access to all information and documentation, the ADMO database software enables central planning and management of testing and maintenance activities for protection systems in the power industry.

With this database you can manage the following protection system components: auto-reclosers, protective relays, communication systems, control circuitry, current and voltage transformers, circuit breakers, station DC supplies, and energy meters.

Exchange your documents with various platforms

ADMO supports the storing and management of ARCO 400 data and testing results, as well as third-party test documents and documents individually created in Microsoft Excel, Microsoft Word or Adobe Acrobat (PDF) file formats. Graphic files can also be attached (e.g. photos of the test set-up, screenshots).



ADMO is an easy-to-use database software for central planning and management of all testing and maintenance activities for protection systems in the power industry

Distribution automation scheme testing

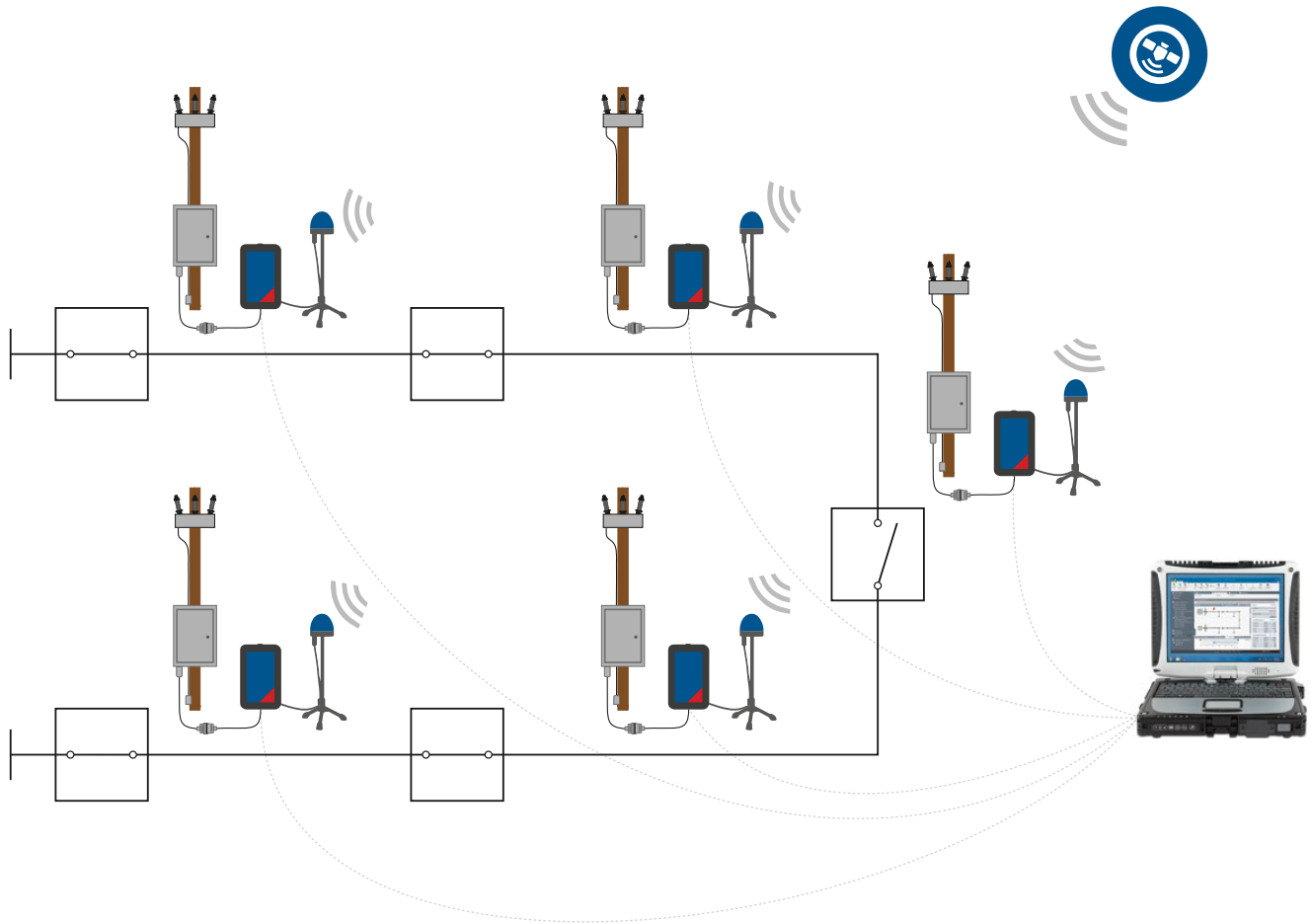
Testing protection and communication

With the increase of distribution automation schemes being implemented due to Smart Grid requirements, modern auto-reclosers must use complex algorithms to adapt to the network and failures. Simple function tests of single controllers are not sufficient for testing the automation functionality. Instead, synchronized injection into the controllers involved in the automation scheme is required to test not only the switching logic, but also the communication channels which are an essential part of the scheme.











Benefit from a novel testing approach

RelaySimTest is a unique software for system-based, distributed protection testing in the field that covers these new demands. Its unique approach can reveal failures in the logic of the switching scheme as well as communication issues, requiring only a minimum amount of test steps.

System-based testing does not depend on recloser type, manufacturer, or the detailed parameters of a single controller. The correct tripping and closing behavior is the only variable that is of concern.

















Ordering options

	Description	Basic VE001750	Standard VE001751	Advanced VE001752	Order No.
	ARCO 400 Test Set 3 x 12.5 A, 6 x 8 V ARCO Control software Includes cables and accessories	■	■	■	
	6 x 150 V Option Adds a 150 V range to the 6 x 8 V amplifier for testing of controls that require higher voltage amplitudes	–	–	–	VEHO0007
	ReCoPlan license for ARCO 400 Enables creation and execution of test plans to standardize testing procedures and reduce testing time	–	■	■	VESM2734
	RelaySimTest license for ARCO 400 Enables synchronized distributed scheme testing with RelaySimTest	–	–	■	VESM2735
	CMGPS 588 Synchronization Unit Accessory to time-synchronize the ARCO 400	–	–	■	VEHZ3004
	Extension Cable 7 m/23 ft To connect the ARCO 400 to a Controller Adapter	■	■	■	VEHK0034
	Extension Cable 2 m/6.5 ft To connect the ARCO 400 to a Controller Adapter	–	–	–	VEHK0035
	RVO2 Voltage Generator Combination Cable To wire voltages into a controller with external voltage inputs (only for supported adapters)	–	–	–	VEHK0231
	Carry bag Holds ARCO 400 accessories, extension cable and several Controller Adapters	■	■	■	VEHP0027
	Transport case For ARCO 400 and carry bag	–	–	–	VEHP0026

ARCO 400 smart controller adapters

ARCO 400 smart controller adapters with OMCRON Smart Connect technology are offered for testing of recloser and sectionalizer controls with 10, 14, 19, 24, 26, 32, and 42 pin interfaces. This enables testing of the widest range of controllers including:

	Pin Count	Switch/Breaker type	Suitable for controllers such as	Adapter	Order No.
	10	G&W Viper SP T&B Elastimold MVR	SEL 351RS Kestrel	RVP2 ¹	VEHZ1184
	14	Cooper NOVA G&W Viper S T&B Elastimold MVR	Eaton/Cooper Form 4C, 4D, 5, 6 SEL 351R, 651R, 651RA	RST2 ¹	VEHZ1171
	19	Cooper NOVA G&W Viper S	Eaton/Cooper Form 4C, 4D, 5, 6 SEL 651R	RCP2 ¹	VEHZ1172
	24	Arteche smART RC	Arteche smART P500	RAR2	VEHZ1180
	24	ABB GridShield	ABB RER620	RGS2 ¹	VEHZ1181
	24	Schneider N-/U-/RL-/W-Series	Schneider ADVC Nu-Lec PTCC	RNU2	VEHZ1175
	24	ABB OVR/VR3S	ABB PCD ² SEL 651R	ROV2 ¹	VEHZ1182
	24	S&C ScadaMate	S&C 5801 S&C 6801	RSM2	VEHZ1183
	26	Cooper NOVA-TS/STS	Eaton/Cooper TS/STS Eaton/Cooper Form 5, 6 SEL 651R	RCS2 ¹	VEHZ1173
	32	NOJA OSM-xx-3xx	NOJA RC 10	RNO2	VEHZ1177
	32	Tavrida OSM NOJA OSM-xx-2xx	Tavrida RC 05 NOJA RC-01	RTA2	VEHZ1178
	32	Tavrida OSM AI_2	SEL 651R	RTO2	VEHZ1176
	32	G&W Viper ST/LT T&B Elastimold MVR	SEL 651R	RVT2 ¹	VEHZ1174
	42	G&W Viper ST/LT T&B Elastimold MVR Tavrida OSM AI_4	SEL 651R	RMI2	VEHZ1179

Cannot find the adapter you are looking for? Please check our website www.omicronenergy.com or contact us. We are constantly expanding the range of smart controller adapters to provide you with a suitable adapter for your recloser or sectionalizer control.

¹ Requires RVO2 Voltage Generator Combination Cable (see page 14) if controller is equipped with a separate voltage input connector

² Version without block close function from yellow handle (69 switch) supported only

Technical data ARCO 400

ARCO 400

Amplifier specifications

Current amplifier

Number of outputs	3
Ranges	Range I: 0 ... 1.25 A Range II: 0 ... 12.5 A Range III: 0 ... 8 V
Frequency Range	0 ... 599 Hz

Amplitude accuracy

	Error typical	Error guaranteed
AC accuracy		
50/60 Hz	< 0.04 % of rd. ¹ + 0.01 % of rg. ¹	< 0.08 % of rd. + 0.02 % of rg.
≤ 599 Hz	< 0.25 % of rd. + 0.05 % of rg.	
THD+N at 50/60Hz	< 0.1 %	< 0.25 %
Phase error		
50/60 Hz	< 0.05°	< 0.2°
DC offset		
1.25 A range	< 30 µA	< 300 µA
12.5 A range	< 300 µA	< 3 mA

Output power

Compliance voltage	> 12 V (RMS) > 18 V (DC)
Output power AC	3 × 100 W at 8 ... 12.5 A

Voltage amplifier

Number of outputs	6
Ranges	Range I: 0 ... 8 V Range II ² : 0 ... 150 V
Frequency Range	0 ... 599 Hz

Amplitude accuracy

	Error typical	Error guaranteed
AC accuracy		
50/60 Hz	< 0.04 % of rd. + 0.01 % of rg.	< 0.08 % of rd. + 0.02 % of rg.
≤ 599 Hz	< 0.25 % of rd. + 0.05 % of rg.	
THD+N at 50/60Hz	< 0.1 %	< 0.25 %
Phase error		
50/60 Hz	< 0.05°	< 0.2°
DC offset		
150 V range	< 10 mV	< 20 mV
8 V range	< 500 µV	< 1 mV

Output power

Per channel (Range II)	250 mA (AC) 350 mA (DC)
Output power AC	3 × 15 W / 6 × 10 W at 57 ... 150 V

¹ rd. = reading, rg. = range

² Hardware option



Binary inputs

Number of binary inputs	6
Number of potential groups	6
Type	Wet
Sampling frequency	10 kHz
Time resolution	100 μ s
Rated input voltage	250 V CAT III
Resolution	1 V
Threshold voltage range	5 ... 250 V
Input impedance	Configurable
Insulation	6 galvanically isolated binary inputs

Binary output relays

Number of binary outputs	9
Number of potential groups	3
Type	Potential-free contacts, NO
Contact rating	250 V / 0.5 A
Total make time	< 6 ms
Total break time	< 3 ms

Environmental conditions

Operating temperature	-10 °C ... +50 °C / +14 °F ... +122 °F -10 °C (+14 °F) – 16 h (IEC 60068-2-1) +50 °C (+122 °F) – 16 h (IEC 60068-2-2)
Storage and transportation	-25 °C ... +70 °C / -13 °F ... +158 °F
Maximum altitude	
Operating	4 000 m / 13 000 ft
Non-operating	15 000 m / 49 000 ft
Humidity	5 % ... 95 % relative humidity; no condensation

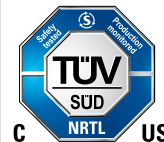
Equipment reliability

EMC	IEC 61326-1, CISPR 22, FCC Subpart B of Part 15 Class A
Shock	30 g (11 ms half sine) according to IEC 68-2-27
Vibration	5 g (10 Hz – 2000 Hz) according to IEC 68-2-64
Drop test	2 drops (transport position) 0.5 m / 1.6 ft IEC 60068-2-31

Power supply and mechanical data

Single-phase, nominal	100 ... 240 VAC
Single-phase, permissible	85 ... 264 VAC
Current, nominal	1 A max. at < 170 V 10 A max. at > 170 V
Frequency, nominal	50/60 Hz
Weight	10 kg / 22 lbs
Dimensions (W x H x D)	200 x 350 x 455 mm / 7.9 x 13.8 x 17.9 in

Certifications



All input / output values are guaranteed for one year within an ambient temperature of 23 °C \pm 5 °C / 73 °F \pm 10 °F. Accuracy values indicate that the error is smaller than \pm [(read value x reading error) + (range setting x range error)].

A strong and safe connection

Welcome to the team

At OMICRON you can always depend on an experienced team that actively supports you and an infrastructure that you can rely on. We always listen attentively in order to understand your needs so that we can offer you the best possible solutions. We strive for lasting partnerships and ensure that you can continue to rely on your product long after you've purchased it. In order to do this, we focus on quality, the transfer of knowledge and unique customer support.

Aditya, David and Fabian are able to tell you about the services we have available for you and why it pays to be part of the team.



Aditya Taneja
Application Specialist

Solutions you can rely on...

... developed with experience, passion and an innovative approach that we use to continually set groundbreaking standards in our industry sector.

We invest more than 15 % of the total turnover in research and development so that we can even guarantee the reliable use of the latest technology and methods in the future.

Our comprehensive product care concept also guarantees that your investment in our solutions – like free software updates – pays off in the long term.





David Negrón
OMICRON Academy



We share our knowledge...

... by maintaining a constant dialogue with users and experts. Some examples of this are our customer events and conferences that take place all over the world and our collaboration with numerous standardization committees.

We also make our knowledge available to you in the customer section of our website in the form of application reports, specialized articles and articles in the discussion forum. With the OMICRON Academy, we also provide a wide spectrum of training possibilities and assist you with Start-up training and free webinars.



Fabian Kolb
Technical Support

24/7 support

When rapid assistance is required...

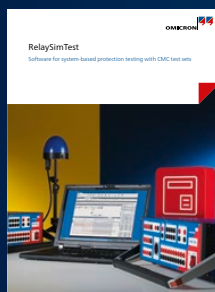
... our excellent level of support is always appreciated. You can reach the highly-qualified and committed technicians in our customer support department 24 hours a day, seven days a week – and it's completely free. We deal with repair services and service features in a fair and non-bureaucratic manner.

We can help minimize your downtime by lending you equipment from a readily available plant at one of our service centers in your area. A comprehensive offer of services for consulting, testing and diagnostics completes our range of services.

OMICRON is an international company serving the electrical power industry with innovative testing and diagnostic solutions. The application of OMICRON products allows users to assess the condition of the primary and secondary equipment on their systems with complete confidence. Services offered in the area of consulting, commissioning, testing, diagnosis and training make the product range complete.

Customers in more than 150 countries rely on the company's ability to supply leading-edge technology of excellent quality. Service centers on all continents provide a broad base of knowledge and extraordinary customer support. All of this together with our strong network of sales partners is what has made our company a market leader in the electrical power industry.

The following publications provide further information on the solutions described in this brochure:



RelaySimTest



ADMO



Testing Solutions for Recloser Controls

For more information, additional literature, and detailed contact information of our worldwide offices please visit our website.