



Advanced Test Equipment Corp.

www.atecorp.com

800-404-ATEC (2832)

RECON PRO

ARTICULATING VIDEO BORESCOPE



6" OLED Display Screen

Responsive Touchscreen

1080p Imaging Capability

64GB SD Card,
HDMI and USB
Connectivity

Military-Grade
Durability

4-way 360* Power-Glide
Joystick Articulation

Built-In Speakers

Intuitive Single-Use
Buttons

Interchangeable Probe System

Tungsten Braided
Insertion Tubes

Ergonomic Pistol Grip Design

5 Levels of
LED Illumination

Rechargeable Li-On Battery

5X Digital Zoom

Wrist & Shoulder
Straps

Rubber Grip & Magnetic Base

Made By

SPI BORESCOPIES
INSPECTION & TECHNOLOGIES



HIGHLIGHTED FEATURES (1/2)



True Interchangeable Probe System

Change probes in under one minute to conduct a variety of inspections with a single base unit or swap broken probes immediately to keep your inspections uninterrupted.

Custom Probe Kits

Choose from over 15 probes, camera types, lengths, diameters, and accessories. Create a customized inspection kit that aligns perfectly with your needs. We also offer custom probe manufacturing to meet specific requirements.



Improved Articulation

Our latest enhancement in direct drive articulation has significantly improved the durability, responsiveness, and articulation range of our probes to ensure a more robust and versatile articulation experience.

OLED Touchscreen

Easily tag your images, access Recon Pro functions, and view inspection with the exceptional clarity of OLED technology.



HIGHLIGHTED FEATURES (2/2)



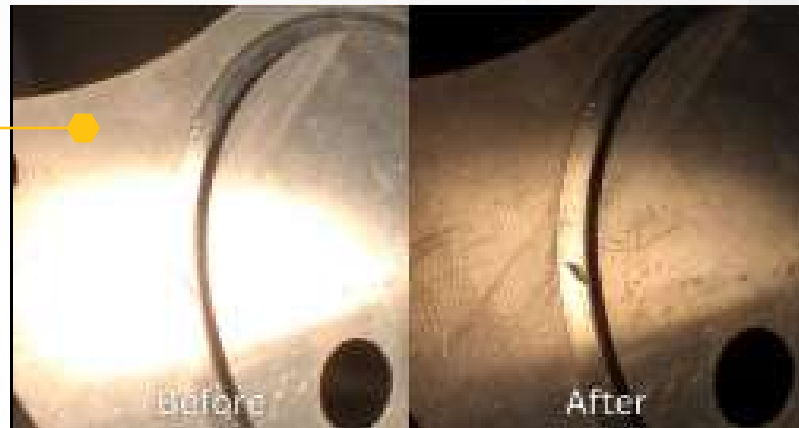
HD Image Quality

The Recon Pro delivers an astonishing (1800 x 1088) 1080p HD image.

4 -Image Enhancement Settings

- Choose from four intuitive image enhancement settings to optimize your inspection clarity.

Strong Light Suppression Pictured



What's Included:

- Hard-Shell Borescope Case
- RECON Pro Borescope
- Battery Charger & Adapter Cord
- AC Power Adapter
- 3FT HDMI Cable
- 64GB SD Card
- Multi-Function SD Card
- Adapter
- Li-ion Batteries
- RECON Unit Shoulder Strap
- SPI Cleaning Kit
- User Manual

THE BEST USE SPI



SIEMENS



THE SPI DIFFERENCE



Swap and Repair Program

Ensure uninterrupted inspections with our probe swap and repair program. Simply send in your damaged probes and receive an immediate replacement, eliminating the need to replace the entire unit.



Free Demo

Try before you buy! Just call in to schedule a no-cost demo and receive a unit to test on-site. Discover firsthand why the best use SPI.



Customized Pricing

We offer customized, discounted pricing on industry-specific kits and customized probe packages, reducing your inspection expenses.



Immediate Assistance

Our team of inspection specialists are always available to take your call and provide you with all the answers and assistance you require.



TECHNICAL SPECIFICATIONS

RECON PRO TECHNICAL SPECIFICATIONS

Insertion Tube	Outer Diameter	1.8mm	2.0mm	2.4mm	2.8mm	3.9mm	6.2mm	6.4mm Dual-View	8.4mm
		Forward Only	Forward Sideview	Forward Only	Forward Sideview	Forward Sideview	Forward Sideview	Forward Sideview	Forward Sideview
	Length	1.5 Meters	1.5 Meters	1.5 Meters	1.5 Meters	1.5/3 Meters	1.5/3 Meters	2M	1.5/3 Meters
	Image Sensor	CMOS1/18	CMOS1/18	CMOS1/18	CMOS1/18	CMOS1/4	CMOS1/6	CMOS 1/9	CMOS1/6
	Resolution / Pixels	160,000	160,000	160,000	160,000	864,000 (720p)	1,954,400 (1080p)	864,000 (720p)	1,954,400 (1080p)
	Depth of Field	2mm-50mm	2mm-50mm	2mm-50mm	2mm-50mm	4m-80mm	6mm-Infinity	4mm-80mm	6mm-100mm
	Field of View	>120	>120	>120	>120	>120	>120	>120	>120
	Viewing Angle	0°	0° 90°	0° 90°	0° 90°	0° 90°	0° 90°	0° 90°	0° 90°
	Illumination Output	>3K Lux	>3K Lux	>3.5K Lux	>5K Lux	>20K Lux	60K Lux	18K Lux	70K Lux
	Articulation	No	2-Ways	2-Ways	4-Ways	4-Ways	4-Ways	4-Ways	4-Ways
	Interchangeable	Yes	yes	Yes	Yes	Yes	Yes	Yes	Yes
	Exterior Material	Stainless Steel	Stainless Steel	Stainless Steel	Stainless Steel	Tungsten Braid	Tungsten Braid	Tungsten Braid	Tungsten Braid
Water Resistance	IP65	IP65	IP65	IP65	IP65	IP65	IP65	IP65	
Base Unit	Display	Multi Touch			Software	Operation System	RTOS Multitasking Operating System, touch/menu Operation		
	Screen Size	5.4"				Image Control	4 Levels		
	Resolution	1920x1080				Image Format	JPG 1200x720/1800x1920		
	Screen Brightness	1000 CD/m*2				Image Resolution	MOV 1200x720/1800x1920		
	Screen Contrast Ratio	1500/1				Software Update	Upgrade Via USB Upgrade package		
	Display Frame Rate	30 FPS				Language(s)	14		
	Articulation Control	Manual				White Balance/ AGC/Exposure	Auto/Manual		
	Compatibility	Base Unit is Compatible With All Probes				Image Capture	10		
	Output Interface	HDMI/AV				Photos While Recording	Yes		
	USB Interface	Mini USB				Screen Rotate	Yes		
	System Running Memory	1.8 GB				LED Display Level	Yes		
	Light Type	LED				Image Rename	Yes		
	Lamp Life	10W Hours				Negative	Yes		
	Brightness Control	5 Levels				Screen ruler	Yes		
	Video Output	NTSC/PAL Output				Image Stamp Length	150 Characters		
	Audio	Built-in Speaker and Mic			Image Adjustments	Shadow Display/3D Noise Reduction/Image Enhance/Light Surpres-sion			
	SD Card	64G (128G Option)			Durability	Probe Working Temperature	-4°F to 158°F (-20°C to 70°C)		
	Power Supply	AC Power Input	AC 100-240V 50/60Hz 0.35A			System Operating temperature	-4°F to 158°F (-20°C to 70°C)		
AC Power Output		8.4 2A				Storage Tempera-ture	14°F to 122°F (-10°C to 50°C)		
Lithium-ion battery		3.7V/5600MAH*2 26650			IP Rate	IP64			