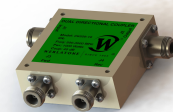




WERLATONE

Model C6559



PRODUCT DATA SHEET

C6559

4-Port Dual Directional Coupler employs two, 3-Port Uni-Directional Couplers, internally connected, in tandem, providing measurement of both forward and reverse power. Ideal for simultaneously monitoring a system's forward and reverse power and for reflectometer measurements. Unlike the Bi-Directional Coupler, the directivity of the Dual Directional Coupler is unaffected by the loads on the coupled ports.

Features:

High Power Wide Bandwidths Small Size Flat Coupling Custom Designs Available

Electrical Specifications:

Frequency: 500 - 3000 MHz
Power: 1000 W CW
Coupling: 40 ± 1.0 dB Max.
Insertion Loss: 0.25 dB Max.
Flatness: ± 0.75 dB Max.
VSWR (ML): 1.30:1 Max.
Directivity: 15 dB Min.

Mechanical Specifications:

Type: Connectorized
Material: Aluminum 6061-T6
Surface Finish: Chem. Film Per MIL-DTL-5541F
Type I Class 3 (Yellow Iridite)
RoHS Compliant Available
Operating Temperature: -55°C to +75°C
Storage Temperature: -60°C to +85°C
Humidity: 95% Non-Condensing
Size: 3.0 x 3.0 x 1.09"

Connector Configurations:

Model	Input (J1)	Output (J2)	Fwd (J3)	Rev (J4)
C6559-10	N Female	N Female	N Female	N Female
C6559-12	N Female	N Female	SMA	SMA
C6559-13	N Female	N Female	BNC	BNC
C6559-20*	7/16 Female	7/16 Female	N Female	N Female
C6559-22*	7/16 Female	7/16 Female	SMA	SMA
C6559-23*	7/16 Female	7/16 Female	BNC	BNC
C6559-43	SC Female	SC Female	SMA	SMA
C8722-302	TNC Female	TNC Female	SMA	SMA
C6559-712	N Male	N Female	SMA	SMA
C6559-714	N Male	N Female	N Female	N Female
C6559-728	7/16 Male	7/16 Female	SMA	SMA

(7/16 Mainline connector option increases size to 3.0 x 3.0 x 1.59")

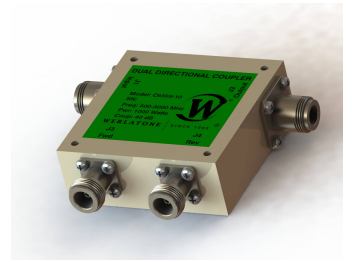
Restriction on use, duplication, or disclosure of proprietary information. This document contains proprietary information which is the sole property of Werlatone, Inc.

Werlatone, Inc. 17 Jon Barrett Road Patterson, NY 12563 T:(845)278-2220 F:(845)278-3440 sales@werlatone.com www.werlatone.com



WERLATONE

Model C6559

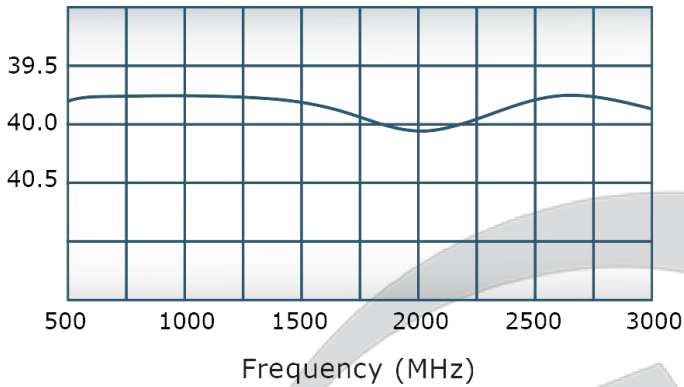


PRODUCT DATA SHEET

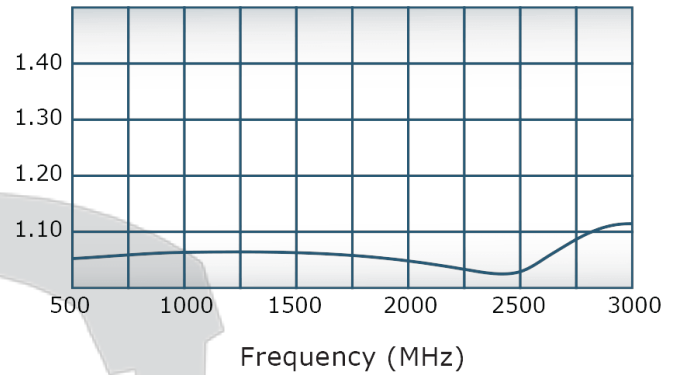
C6559

Performance Data (Specifications subject to change without notice):

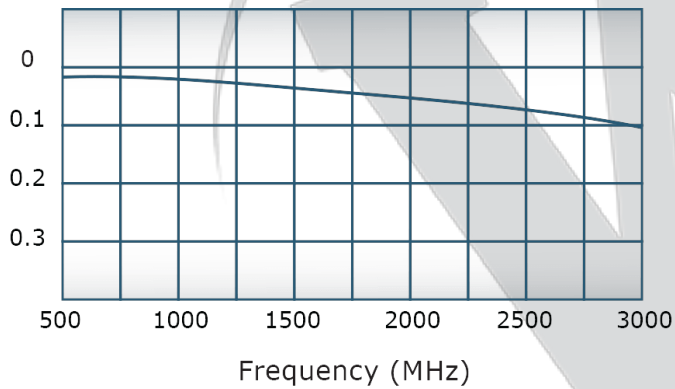
Coupling:



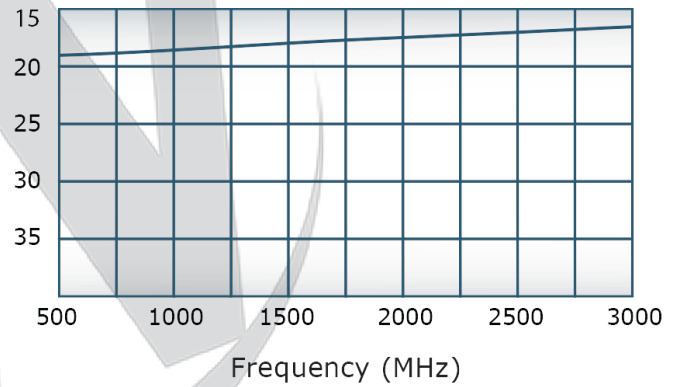
VSWR:



Insertion Loss:



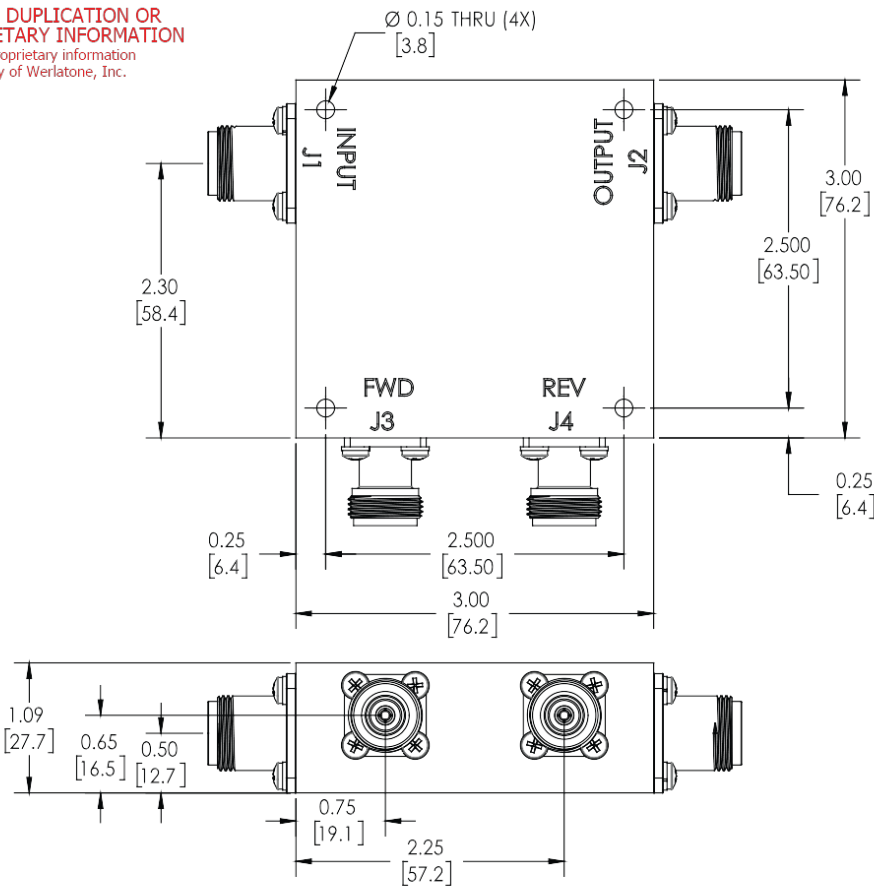
Directivity:



Restriction on use, duplication, or disclosure of proprietary information. This document contains proprietary information which is the sole property of Werlatone, Inc.

Werlatone, Inc. 17 Jon Barrett Road Patterson, NY 12563 T:(845)278-2220 F:(845)278-3440 sales@werlatone.com www.werlatone.com

RESTRICTION ON USE, DUPLICATION OR DISCLOSURE OF PROPRIETARY INFORMATION
This document contains proprietary information which is the sole property of Werlatone, Inc.



REVISION HISTORY			
REV.	REVISION RECORD	DATE	APPROVED
A	ECN 9696	11/27/18	RB

NOTES: UNLESS OTHERWISE SPECIFIED

- MATERIAL: ALUMINUM 6061-T6**
- FINISH: CHEM FILM PER MIL-DTL_5541F TYPE I CLASS 3 (YELLOW IRIDITE)**

UNLESS OTHERWISE SPECIFIED				OWN	DATE	17 Jon Barrett Rd Patterson, NY 12563	
• INTERPRET DRAWING 9449 MIL-STD-100	• DIMENSIONING FOR ASME Y14.5M-2009	• PARENTHETICAL INFO FOR REF ONLY	• DIMENSIONS ARE IN INCHES	• DIMENSIONAL LIMITS APPLY BEFORE PROCESSES	• TOLERANCES:	WERLATONE SINCE 1965 OUTLINE	
• ANGLES: ± 2°	• 3 PL. ± .005 [1.3]	• 2 PL. ± .015 [3.8]	• REMOVE ALL BURRS AND SHARP EDGES R.01 MAX	• CONCENTRICITY MACHINED DIA: .002 FIM	• MACHINE TOOL MISMATCH: .003 MAX		
NEXT ASSY	USED ON	APPLICATION	THIRD ANGLE PROJECTION	DATE	DATE	SCALE	REV
				DATE	DATE	1:1	A

Restriction on use, duplication, or disclosure of proprietary information. This document contains proprietary information which is the sole property of Werlatone, Inc.
Werlatone, Inc. 17 Jon Barrett Road Patterson, NY 12563 T:(845)278-2220 F:(845)278-3440 sales@werlatone.com www.werlatone.com