



PCTEL® – TEST AND MEASUREMENT

Public Safety Testing Solution

Efficiently verify public safety network coverage



Concerned if First Responders can communicate during emergencies?

- Verify network coverage and signal quality before an emergency occurs
- Enforce standards for new or existing buildings

Conducting tests to meet building code?

- Automatically test to code requirements
- Streamline the building approval process

In-Building Grid Test Tool Features

- Real-time pass/fail results and printable reports
- Conforms with codes including NFPA 1221 and IFC 510 (2018)
- Simultaneously tests multiple channels, bands, and technologies
- Tests signal quality (optional features)
 - P25 Decode: SINR, BER, Frame BER, Network ID
 - Cellular Decode: LTE/FirstNet, UMTS/WCDMA
- Custom Channel Power RSSI Measurements for TETRA, DMR, EDACS, analog LMR, P25, and other technologies
- Supports any Public Safety, LTE, and UMTS/WCDMA bands



PCTEL's IBflex® scanning receiver and SeeHawk® Touch software combine to support indoor/outdoor public safety testing

PUBLIC SAFETY TESTING SOLUTION

Tired of using complicated testing tools, lugging heavy equipment and hand recording scan results on grid paper just to apply for an occupancy permit? Now there's a better way to easily test indoor network coverage.

PCTEL's automated grid-based testing solution streamlines the way engineers and inspectors test public safety network coverage indoors.

OUR PUBLIC SAFETY SOLUTION CONSISTS OF:

- SeeHawk Touch data collection software with Indoor Walk and Grid Test modes, plus Signal Analyzer
- SAMSUNG Android™ tablet
- IBflex® scanning receiver measures channel power (RSSI) for radio technologies across all public safety bands (140-990 MHz) and cellular bands (10-3800 MHz). Optional: P25 and cellular signal decode.
- **Accessories:** IBflex battery pack with 2 batteries, charger, backpack, 2 indoor antennas, data cable, and carrying case

Contact your sales representative to schedule a demo today.

MULTIPLE APPLICATIONS INTEGRATED IN ONE TOOL



Grid test tool for public safety indoor coverage requirement



DAS/Small Cell walk test

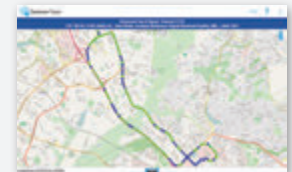


Integrated spectrum analysis

Optional Add-Ons



DAS/Small Cell activities antenna verification

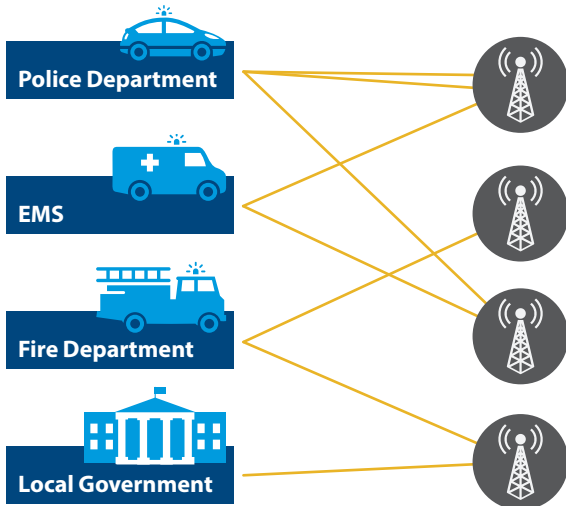


Outdoor drive test

PUBLIC SAFETY COMMUNICATIONS NETWORKS

OUTDOOR COVERAGE

(P25, LTE, TETRA, etc.)



INDOOR COVERAGE AND SIGNAL QUALITY

Commercial building or High-occupancy residence

- Coverage: downlink power for all technologies/bands
- Quality (optional): P25, LTE/FirstNet, UMTS

Real-time results per floor



BENEFITS FOR SUMMARY REPORT INCLUDE:

- Pre-configured reporting as specified by NFPA and IFC standards
- Report provides Pass/Fail results automatically by Channel and Grid in a Word document
 - Each floor has a report with the floor plan view
 - Building Report summarizes results over all floors, for single channel or all channels
 - Full set of results saved on Excel compatible file

Building result file generated automatically



© 2019 PCTEL, Inc. All Rights Reserved. Product prices, materials and specifications are subject to change without notice. SeeHawk Touch software is available alone or on a tablet. Android is a trademark of Google Inc. All others are registered marks of their rightful owners.

610113-0619