

Anritsu Advancing beyond

Network Master™ Series

Network Master Pro MT1040A

400G (QSFP-DD) Multirate Module	MU104014B
400G (OSFP) Multirate Module	MU104015A
100G Multirate Module	MU104011A/MU100011A
10G Multirate Module	MU100010A1
OTDR Module	MU100020A/MU100021A/MU100022A/MU100023A





400G

- anywhere, anyspeed, any test



Network Master Pro MT1040A

Small

Battery powered for 400G Ethernet measurements

Easy-to-use GUI with 9-inch touchscreen for better operability

Flexible

One unit supports multiple standards, including OTN, eCPRI/RoE, Fibre Channel

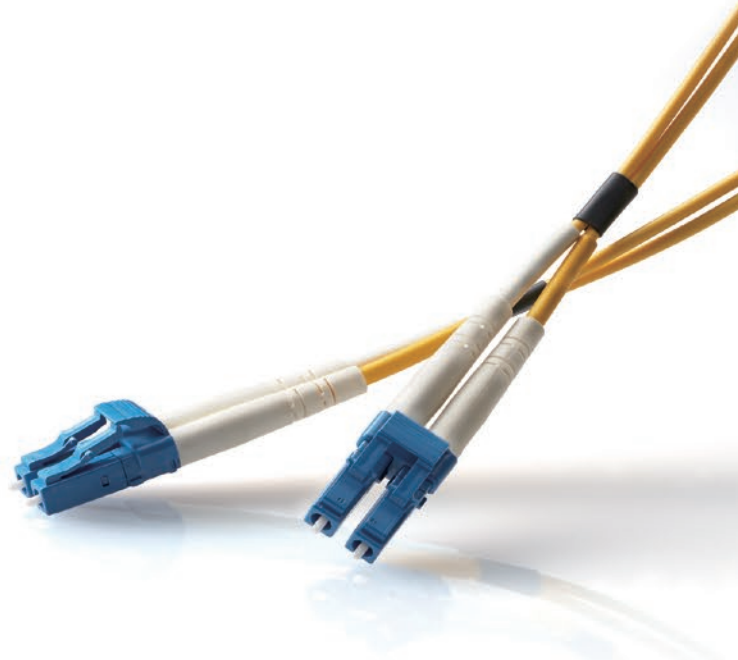
Optical fiber line measurement in combination with OTDR module

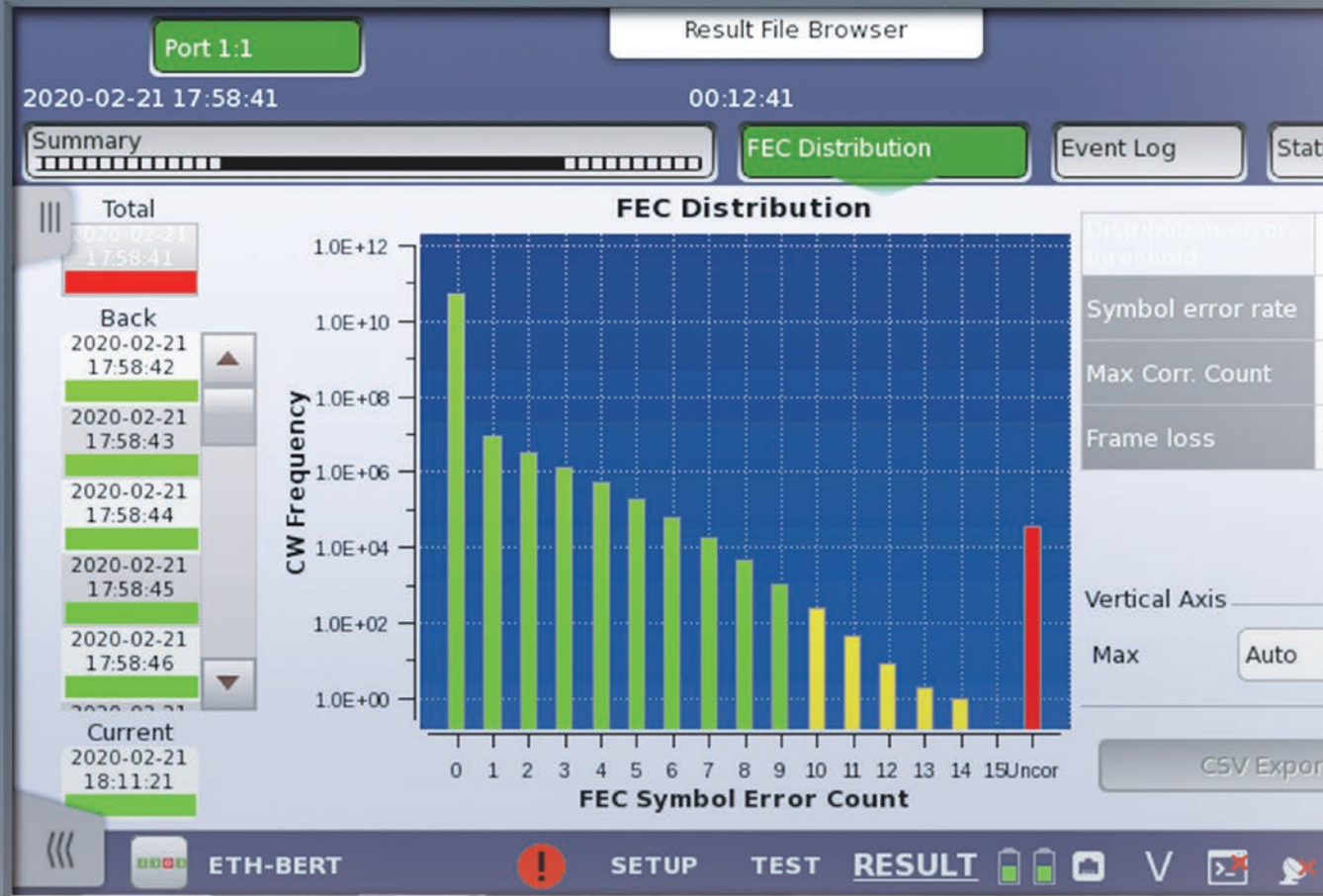
Powerful

Built-in 400G Ethernet FEC analysis function

Simple optical module check function

More efficient work with automated-measurement tools supporting one-button tests





Small ... Compact and Lightweight

With a built-in, large 9-inch touchscreen, the Network Master Pro MT1040A is the ideal instrument for 400G Ethernet tests.

Measurement Modules

	QSFP-DD/QSFP56	OSFP	QSFP28/QSFP+	SFP28/SFP+/SFP	RJ45
MU104014B	1 port		2 ports	2 ports	2 ports
MU104015A		1 port	1 port	2 ports	2 ports
MU104011A			2 ports	2 ports	2 ports



400G (QSFP-DD) Multirate Module
MU104014B



400G (OSFP) Multirate Module
MU104015A



100G Multirate Module
MU104011A

Testing is supported by installing the Activate for 400G Dual/100G Quad Option MT1040A-020 and two measurement modules.



The MT1040A is both AC and battery powered (with more than 1 hour of 400G tests while on battery power).

Powerful Support for On-site I&M Work

As networks become increasingly advanced, installation and maintenance (I&M) engineers need a good understanding of the technologies supporting metro and mobile networks, data centers, etc., and tester operation. Additionally network commissioning sometimes requires many different measurements, which imposes a heavy load on operators working on-site. With a full range of built-in test functions, the MT1040A helps lighten operators' workloads.

Easy-to-Use GUI with Large 9-inch Touchscreen

The MT1040A has a wide 9-inch touchscreen built-into the wide B5-size case. At on-site testing with no available AC supply, the battery secures 1 hour (average) of continuous, problem-free 400G interface measurements. The GUI is designed for efficient on-site network I&M evaluation work, and fast troubleshooting if a problem occurs. The intuitive user interface also helps shorten operator training times.

Flexible Connectivity

WLAN, Bluetooth® and LAN connectivity ensure quick and simple tester access in any situation. While remote operation allows an experienced engineer to assist colleagues in the field.

The Bluetooth® mark and logs are owned by Bluetooth SIG, Inc. and are used by Anritsu under license.

Application Selector



Test Results File Creation



Splitting the settings and results between three screens helps the operator find the required screen quickly.

Test Port Setting



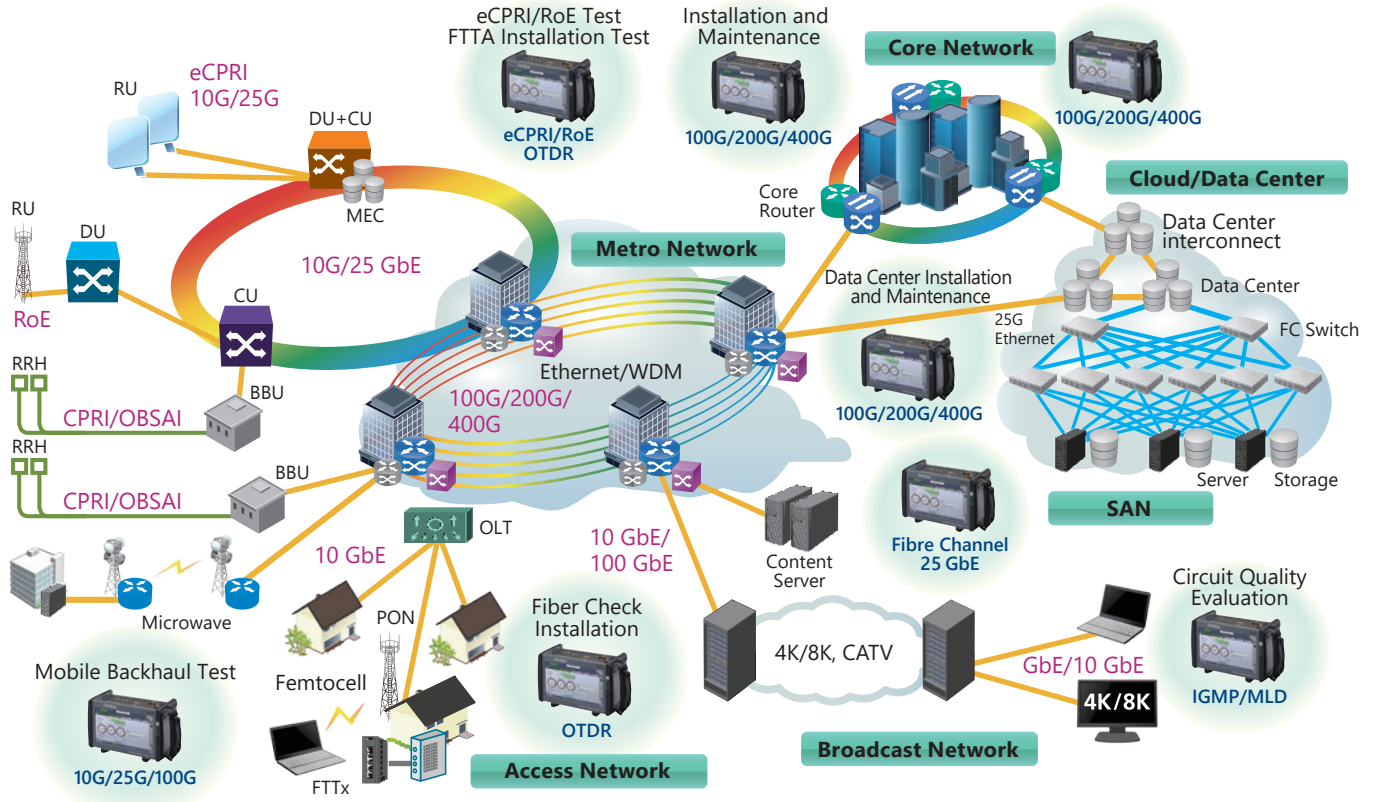
Test Condition Setting



Test Results Display



The Network Master supports all types of network I&M.



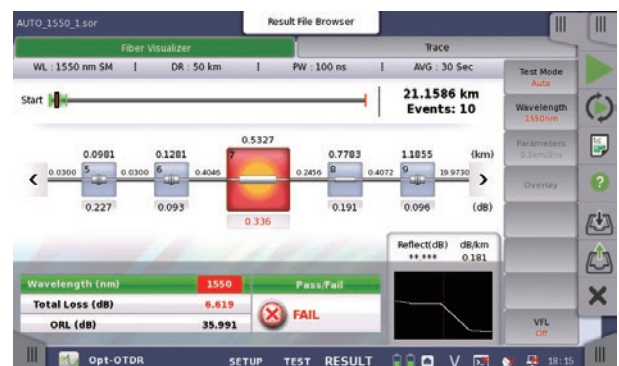
The modular design of the Network Master Pro MT1040A platform makes it easy to support I&M for different network configurations. Furthermore, options for each test function can be selected and added as necessary to match the work schedule, helping cut initial capital costs.

Transport Module Interfaces and Protocols

Interface	Ethernet	OTN	SDH/SONET	Fibre Channel	eCPRI	CPRI/OBSAI
QSFP-DD/OSFP	400 GbE	—	—	—	—	—
QSFP56	200 GbE	—	—	—	—	—
QSFP28	100 GbE	OTU4	—	—	100 GbE	—
QSFP+	40 GbE	OTU3x	—	—	40 GbE	—
SFP28	25 GbE	—	—	—	25 GbE	CPRI10
SFP/SFP+	GbE/10 GbE	OTU1x/OTU2x	STM1-64/ OC3-192	1G/2G/4G/8G/10G/ 16G FC	GbE/10 GbE	CPRI 1/2/3/4/5/6/7/8/9 OBSAI 1x/2x/4x/8x
RJ45	10/100/1000M	—	—	—	10/100/1000M	—

OTDR Module

This module helps detect fiber-cable faults, such as dust or scratches at fiber-connector end faces, and excessive optical reflections. The built-in Fiber Visualizer function featuring easy report creation and output helps improve work efficiency too.



Fiber Visualizer Screen

Transport Application

Ethernet Installation and Troubleshooting

Network operators are introducing new carrier-class technologies, such as VLAN, Q-in-Q, Ethernet OAM, etc., to their Ethernet service menus, increasing test complexity and test time for field technicians.

With connectivity, bandwidth, QoS (Quality of Service), and service-related test functions, the MT1040A is ideal for commissioning and troubleshooting Ethernet networks at speeds up to 400 Gbps.

- BER tests – include Frame Loss and Sequence Error tests
- FEC Analysis
- Automated RFC 2544 tests of Throughput, Frame Loss, Latency or Packet Jitter, Burstability
- Filters – to extract relevant parts of traffic
- Separate pass/fail threshold settings
- Multistream Tx/Rx function (QoS/CoS test)
- Stacked VLAN (Q-in-Q)
- Link Fault Signaling (LFS) Emulation (10 Gbps to 400 Gbps)

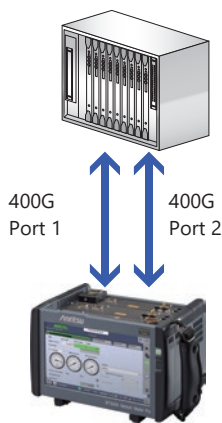
Supports I&M for Various Transport Networks

Networks do not only use Ethernet technology. Consequently, in addition to supporting Ethernet, the MT1040A also supports mobile networks using eCPRI and CPRI, core networks using OTN and SONET/SDH, and various other networks such as fiber channel used by data centers and video streaming services. Adding various protocols also facilitates network I&M.

Strong Support Ranging from 400 GbE Equipment Tests to Network I&M

Two measurement modules can be installed in the MT1040A by adding MT1040A-020. As a result, both 400G dual port and 100G 4 port measurements are supported. Customized installed options facilitate applications ranging from equipment inspection to network I&M.

Laboratory Equipment Tests



400G Dual-port Tester

All-in-one, single-screen detailed laboratory network and equipment tests

Functions, GUI, Automatic Measurement Scenario Sharing

- Laboratory and on-site field tests with minimum advanced training
- Both separate and shared measurement modules



On-site I&M Tests

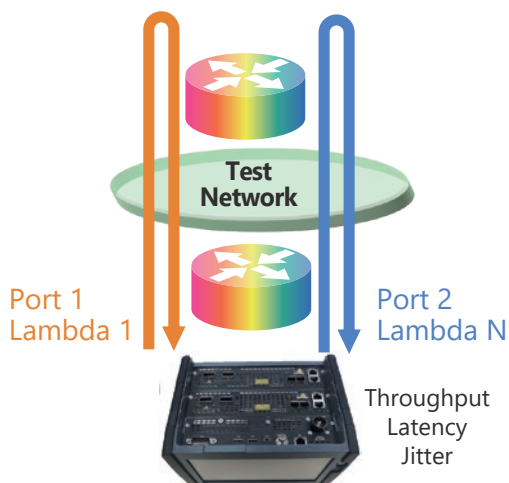


Compact 400G Tester

Battery operation for on-site tests and tests between two sites

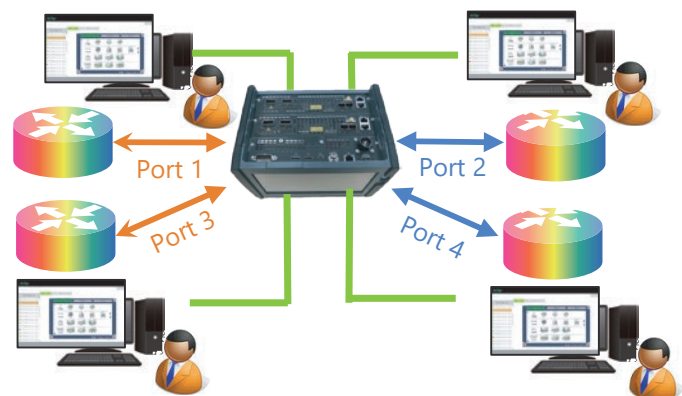
Mutual Interference Test between Ports

Dual-port measurement comparing the performance between two ports on one screen supports easy interference-free testing.



Multi User

Maximum four person can use the same MT1040A without restrictions. Each person controls MT1040A from local PC providing effective test tasks.



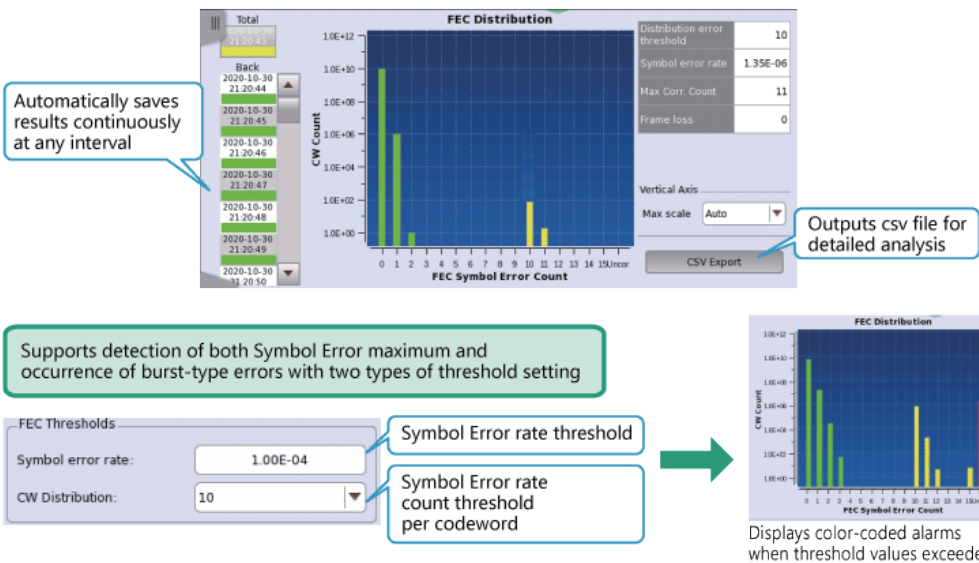
400G Ethernet FEC Analysis

Ethernet equipment interfaces use optical modules. With some exceptions, pass/fail verification of optical modules up to 100G is performed simply by measuring the bit error rate (BER) for a fixed period of repeated sending and receiving of signals to confirm the error-free status. Similarly, network throughput and latency are measured using a BERT.

However, the 400G Ethernet PMD layer is switching to PAM4 and FEC (Forward Error Correction) to correct errors occurring at optical transceivers and networks transmitting extremely fast signals, and to assure both communications quality and lower costs. FEC is a technology for correcting errors within the correctable range, and assures high reliability as well as extended transmission distance.

MT1040A FEC Symbol Error Measurement

The MT1040A supports both visual monitoring and quantitative measurement of FEC Symbol Errors while communicating using Ethernet Frames. In addition, it supports two types of threshold setting and continuous saving of measurement results at any interval for stability evaluation and analysis of correlations with other events.



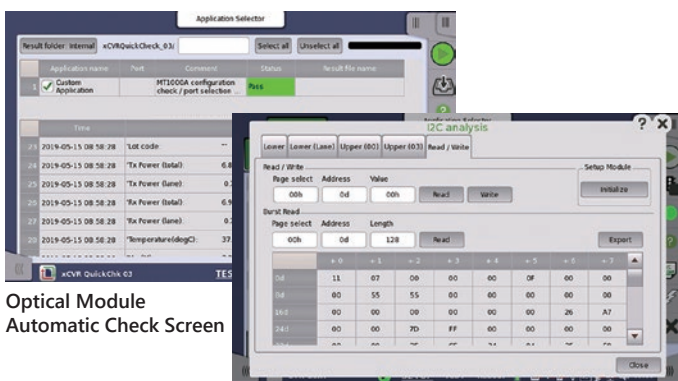
Periodic network monitoring using this function confirms the network load conditions, helping prevent problems.

Easy Optical Module Tests

The MT1040A includes tools for optimized setting of directly connected optical modules. These tools support easy pass/fail tests of optical modules. Moreover, manual access to the optical module MDIO and I2C functions simplifies optical-module checks.



Optical-Module Check



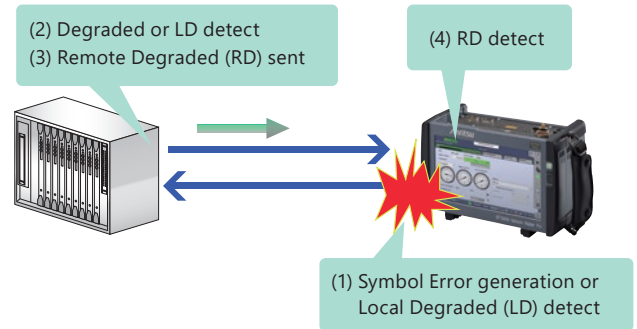
Optical Module Automatic Check Screen

I2C Analysis Screen

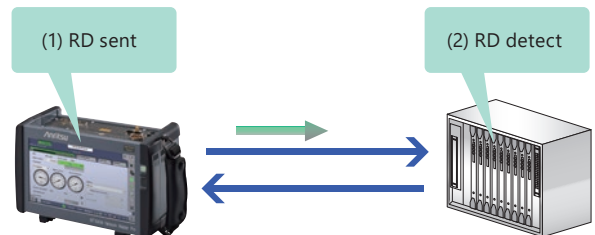
400G Degraded SER Function

The following functions are for testing the equipment 400G Degraded SER function.

(1) Degraded SER Alarm (RD/LD) Generation



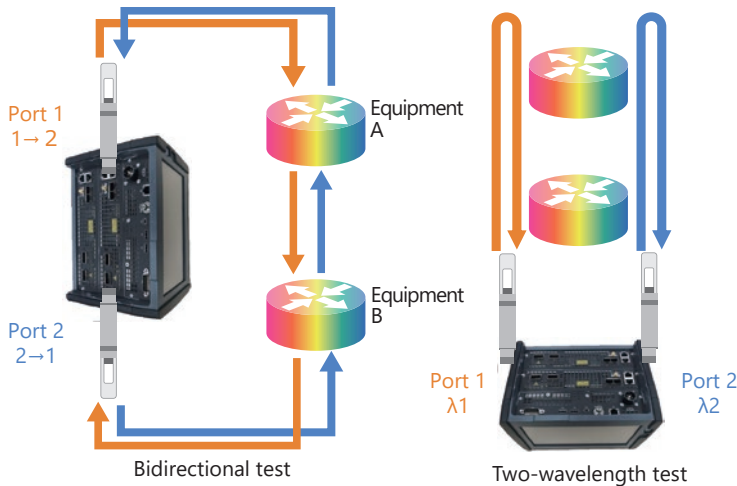
(2) Degraded SER Alarm Emulation



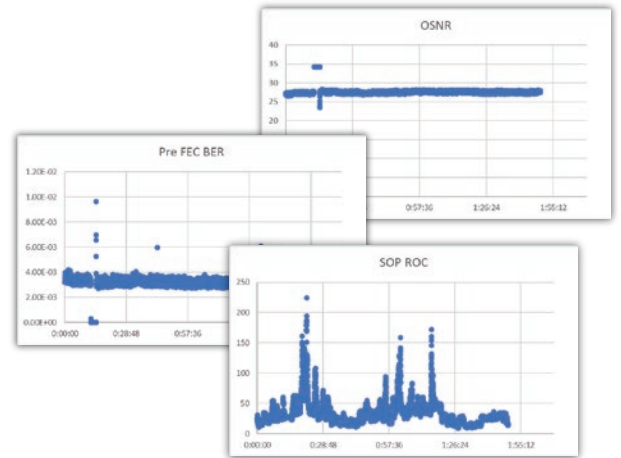
Transport Application

100ZR/400ZR/OpenZR+/OpenROADM Pluggable Coherent

To cut network-expansion costs, introduction of Pluggable Coherent, which implements a coherent transmission function in the transceiver, is progressing. Since these technologies facilitate introduction of open networks, it is more important than ever for users to pre-evaluate the system and analyze actual field performance. The MT1040A assists stable 400ZR/OpenZR+ operation by comprehensive verification using two fully independent ports and detailed live network analysis by continuously monitoring media-side quality, including OSNR/PMD/SOP, using the transceiver's coherent monitoring function.



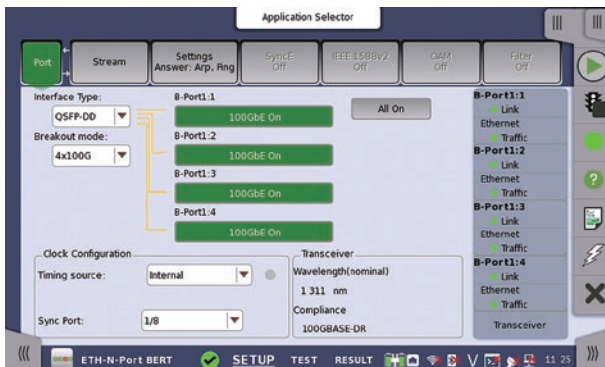
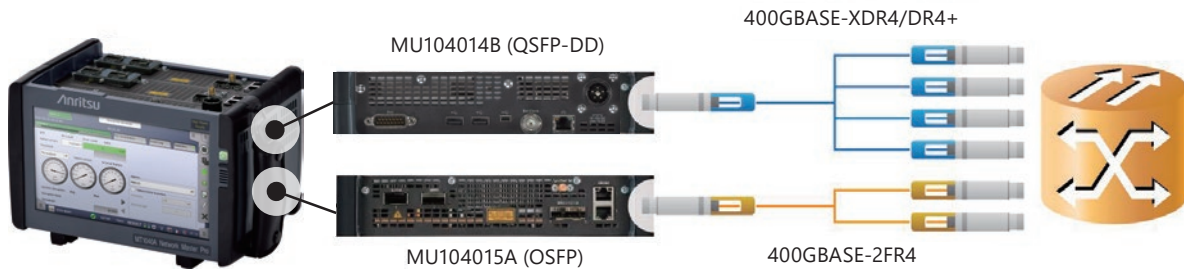
Example of 2-port independent test



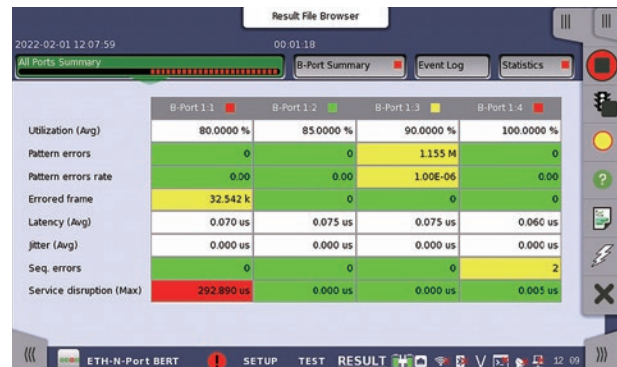
Example of continuous monitoring of media-side quality

N Port BERT Measurement

MT1040A supports 400GBASE-XDR4/DR4+ and 400GBASE-2FR4 breakout optical modules, which enable device and ical module tests. One MT1040A tests two 400GBASE interfaces simultaneously using two installed 400G modules.



MAC Independent setup screen
VLAN, Q-in-Q, MPLS, IPv4, IPv6, UDP, TCP
Static/dynamic frame size

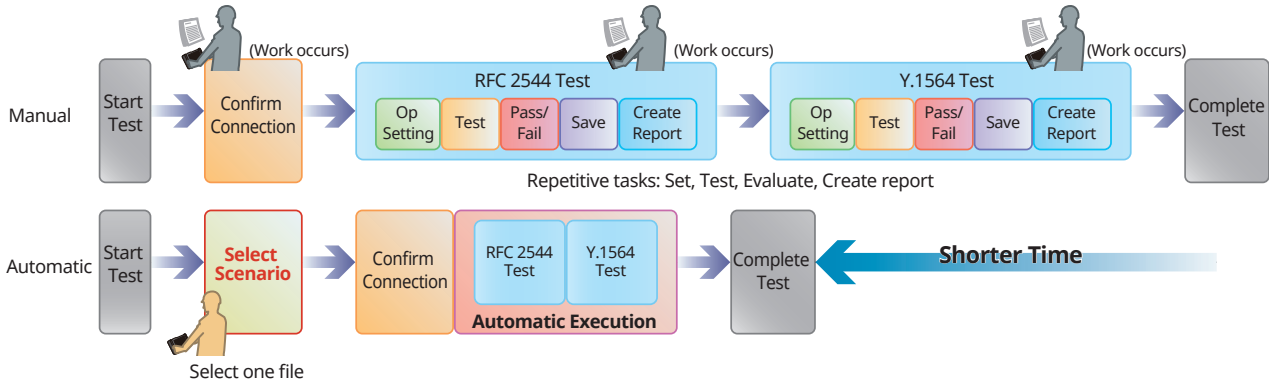
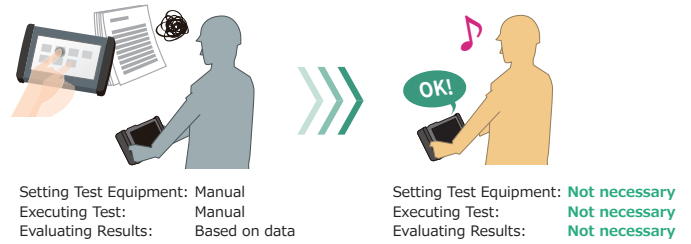


MAC Independent result screen
Service Disruption Time, Throughput, Latency, Jitter.
IPv4 ping to measure Round Trip Time

Strong Support for I&M Field Technicians

One Button Testing (Scenario Environment Editing Kit (SEEK) MX100003A)

The MT1040A has automatic test functions for simple and efficient network commissioning. These MT1040A automated test functions run scenario files created in advance on a PC to perform tests automatically using preset measurement items, procedures, and pass/fail evaluation conditions. Since the scenario also handles report creation, evaluation and results, inexperienced workers can run accurate tests without operation mistakes and re-tests.



Quality Control with Virtual Networks Including Cloud and Data Centers

Virtual Network Master (VNM) MX10903xPC

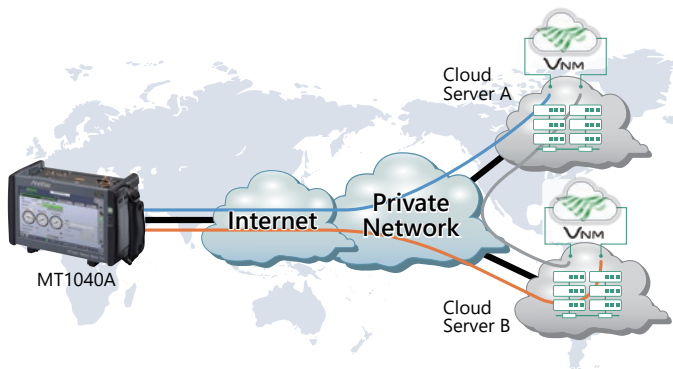
The Virtual Network Master (VNM) MX10903xPC is a software-based measuring device that provides a quantitative measurement environment for cloud servers and data centers. When installed in a cloud environment, the device can conduct quantitative evaluations of one-way latency and frame loss in conjunction with the MT1040A.

Use Cases

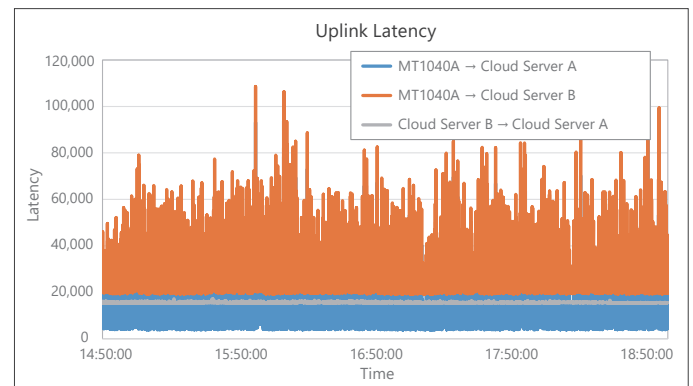
Communication Quality Between Cloud Servers

The communication quality of different routes can be measured simultaneously by deploying the MX10903xPC on multiple Cloud servers. Visualizing the differences between internet routing and inter-Cloud regional network routing can assist switching decisions on redundant configurations and backup-route reliability.

■ Evaluating System Between Cloud Servers



■ Comparing One-Way Latency Of Each Route



For details, go to <https://www.anritsu.com/en-au/test-measurement/products/mx109030pc> (MX10903xPC product page).

Network Master Pro MT1040A Mainframe Specifications

User Interfaces	
Display	9-inch active TFT display (800 × 480 pixels) and touch screen
Supported Languages	English, Chinese, Japanese, French, Russian, Spanish, Finnish, Korean, German

Service Interfaces	
USB Data Interface	MT1040A operates as host: USB 2.0 type A (2 Ports) MT1040A operates as device: USB 2.0 type Mini-B (1 port)
Ethernet Interface	Ethernet 10M/100M/1000M, RJ45 Connector: 1 port
WLAN Interface*	IEEE802.11a/b/g/n (2.4 GHz/5 GHz)
Bluetooth® Interface	Bluetooth 2.1 +EDR

*: Available for certified countries and regions including USA, Japan and EU countries. Please visit the Anritsu web site for updated information.

Other Interfaces	
AUX Connector	For connection of G0325A GPS receiver
Internal Clock	Accuracy: ±4.6 ppm or less, STRATUM3 compliant
Ext. Clock Input	For connection of external clock signals: SETS (E1: 2.048 Mbps), BITS (DS1: 1.544 Mbps) or 2.048 MHz TTL signal in accordance with ITU-T G.703, 10 MHz Connector: BNC (50Ω)

Miscellaneous		
Storage Capacity	7 Gbyte	
Battery	11.25 V rechargeable and replaceable intelligent Li-ion battery × 2 Operating time: 1 hours (typ., in case of 400 GbE) Charging time: 9 hours (Max.) (2 pcs) Remaining capacity indication: %	
Mains Adapter	G0418A (MT1040A Standard Accessory) G0419A (MT1040A-020 Accessory) Input: 110 VAC to 240 VAC, 50 Hz/60 Hz Input: 110 VAC to 240 VAC, 50 Hz/60 Hz Rated output: 19 VDC, 13.2 A max. Rated output 18 VDC, 22.2 A max. Power consumption: 250 W max. Power consumption: 420 W max.	
Dimensions and Mass	262 (W) × 167 (H) × 68 (D) mm (Exclude Projection, MT1040A) 262 (W) × 167 (H) × 134 (D) mm (Exclude Projection, MT1040A + MU104014B) 262 (W) × 167 (H) × 154 (D) mm (Exclude Projection, MT1040A + MU104014B + MU100020A) 262 (W) × 167 (H) × 187 (D) mm (Exclude Projection, MT1040A + MU104014B + MU104014B) ≤4.7 kg (including MT1040A, MU104014B and battery) ≤5.5 kg (including MT1040A, MU104014B, MU100020A and battery) ≤6.5 kg (including MT1040A, MU104014B, MU104014B and battery)	
Environmental	Operating Temperature: 0°C to +50°C, Humidity: ≤85% RH (non-condensing) Charging Temperature: 0°C to +40°C, Humidity: ≤85% RH (non-condensing) Storage Temperature: -30°C to +60°C, Humidity: ≤90% RH (non-condensing, without battery and AC adapter) -20°C to +40°C, Humidity: ≤90% RH (non-condensing, with battery and AC adapter)	
CE	EMC	2014/30/EU, EN61326-1, EN61000-3-2
	LVD	2014/35/EU, EN61010-1
	RoHS	2011/65/EU, (EU) 2015/863, EN IEC 63000: 2018
UKCA	EMC	S.I. 2016 No.1091, EN 61326-1, EN61000-3-2
	LVD	S.I. 2016 No.1101, EN 61010-1
	RoHS	S.I. 2012 No.3032, EN IEC 63000: 2018



MT1040A Interface



MT1040A + MU104014B



MT1040A + MU104014B + MU100020A

Network Master Pro MT1040A Multirate Module Specifications

Model		400G (QSFP-DD) Multirate Module MU104014B	400G (OSFP) Multirate Module MU104015A	100G Multirate Module MU104011A																																																																																																																																																			
Physical Interface	RJ45 Connector	10/100/1000BASE-T	2	2	2																																																																																																																																																		
	SFP Slots	SFF-8431, SFF-8472 compliant, IEEE 802.3ae-2002, IEEE802.3-2008 compliant	2	2	2																																																																																																																																																		
	QSFP Slots	SFF-8436, SFF-8636, SFF-8665 compliant, IEEE 802.3ba-2010 compliant	1	1	2																																																																																																																																																		
	QSFP-DD/ QSFP56 Slots	QSFP-DD Hardware Specification for QSFP Double Density 8X Pluggable Transceiver – Rev 4.0 compliant OIF-CEI-56G-VSR compliant, CMIS - Rev5.0 compliant, OIF-C-CMIS-01.1 compliant	1	0	0																																																																																																																																																		
	OSFP Slots	Rev2.0: Specification for OSFP Octal Small Form Factor Pluggable Module compliant OIF-CEI-56G-VSR compliant	0	1	0																																																																																																																																																		
Bit Rate*1	<table border="1"> <thead> <tr> <th>Standard</th> <th>Bit Rate</th> <th>Interfaces</th> </tr> </thead> <tbody> <tr><td>10BASE-T</td><td>12.5 Mbit/s</td><td>RJ45</td></tr> <tr><td>100BASE-TX</td><td>125 Mbit/s</td><td>RJ45</td></tr> <tr><td>1000BASE-T</td><td>1.25 Gbit/s</td><td>RJ45</td></tr> <tr><td>10GBASE-T</td><td>10.3125 Gbit/s</td><td>RJ45 (SFP+)</td></tr> <tr><td>100BASE-X</td><td>125 Mbit/s</td><td>SFP</td></tr> <tr><td>1000BASE-X</td><td>1.25 Gbit/s</td><td>SFP</td></tr> <tr><td>10GBASE-X</td><td>10.3125 Gbit/s</td><td>SFP+</td></tr> <tr><td>25 GbE</td><td>25.781250000 Gbit/s × 1 Lane</td><td>SFP28</td></tr> <tr><td>40 GbE</td><td>10.312500000 Gbit/s × 4 Lane</td><td>QSFP+</td></tr> <tr><td>100 GbE</td><td>25.781250000 Gbit/s × 4 Lane</td><td>QSFP28</td></tr> <tr><td>200 GbE</td><td>53.125000000 Gbit/s × 4 Lane (26.5625 GbD PAM4 × 4 Lane)</td><td>QSFP56</td></tr> <tr><td>400 GbE</td><td>53.125000000 Gbit/s × 8 Lane (26.5625 GbD PAM4 × 8 Lane)</td><td>QSFP-DD</td></tr> <tr><td>400 GbE</td><td>53.125000000 Gbit/s × 8 Lane (26.5625 GbD PAM4 × 8 Lane)</td><td>OSFP</td></tr> <tr><td>OTU1</td><td>2.666057143 Gbit/s</td><td>SFP</td></tr> <tr><td>OTU2</td><td>10.709225319 Gbit/s</td><td>SFP+</td></tr> <tr><td>OTU1e</td><td>11.049 107143 Gbit/s</td><td>SFP+</td></tr> <tr><td>OTU2e</td><td>11.095727848 Gbit/s</td><td>SFP+</td></tr> <tr><td>OTU1f</td><td>11.270089286 Gbit/s</td><td>SFP+</td></tr> <tr><td>OTU2f</td><td>11.317642405 Gbit/s</td><td>SFP+</td></tr> <tr><td>OTU3e1</td><td>11.142743644 Gbit/s × 4 Lane</td><td>SFP+</td></tr> <tr><td>OTU3e2</td><td>11.145838894 Gbit/s × 4 Lane</td><td>SFP+</td></tr> <tr><td>OTU3</td><td>10.754603390 Gbit/s × 4 Lane</td><td>QSFP+</td></tr> <tr><td>OTU4</td><td>27.952493392 Gbit/s × 4 Lane</td><td>QSFP28</td></tr> </tbody> </table>		Standard	Bit Rate	Interfaces	10BASE-T	12.5 Mbit/s	RJ45	100BASE-TX	125 Mbit/s	RJ45	1000BASE-T	1.25 Gbit/s	RJ45	10GBASE-T	10.3125 Gbit/s	RJ45 (SFP+)	100BASE-X	125 Mbit/s	SFP	1000BASE-X	1.25 Gbit/s	SFP	10GBASE-X	10.3125 Gbit/s	SFP+	25 GbE	25.781250000 Gbit/s × 1 Lane	SFP28	40 GbE	10.312500000 Gbit/s × 4 Lane	QSFP+	100 GbE	25.781250000 Gbit/s × 4 Lane	QSFP28	200 GbE	53.125000000 Gbit/s × 4 Lane (26.5625 GbD PAM4 × 4 Lane)	QSFP56	400 GbE	53.125000000 Gbit/s × 8 Lane (26.5625 GbD PAM4 × 8 Lane)	QSFP-DD	400 GbE	53.125000000 Gbit/s × 8 Lane (26.5625 GbD PAM4 × 8 Lane)	OSFP	OTU1	2.666057143 Gbit/s	SFP	OTU2	10.709225319 Gbit/s	SFP+	OTU1e	11.049 107143 Gbit/s	SFP+	OTU2e	11.095727848 Gbit/s	SFP+	OTU1f	11.270089286 Gbit/s	SFP+	OTU2f	11.317642405 Gbit/s	SFP+	OTU3e1	11.142743644 Gbit/s × 4 Lane	SFP+	OTU3e2	11.145838894 Gbit/s × 4 Lane	SFP+	OTU3	10.754603390 Gbit/s × 4 Lane	QSFP+	OTU4	27.952493392 Gbit/s × 4 Lane	QSFP28	<table border="1"> <thead> <tr> <th>Standard</th> <th>Bit Rate</th> <th>Interfaces</th> </tr> </thead> <tbody> <tr><td>STM-1/OC-3</td><td>155.52 Mbit/s</td><td>SFP</td></tr> <tr><td>STM-4/OC-12</td><td>622.08 Mbit/s</td><td>SFP</td></tr> <tr><td>STM-16/OC-48</td><td>2488.32 Mbit/s</td><td>SFP</td></tr> <tr><td>STM-64/OC-192</td><td>9953.28 Mbit/s</td><td>SFP+</td></tr> <tr><td>CPRI1</td><td>614.4 Mbit/s</td><td>SFP</td></tr> <tr><td>CPRI2</td><td>1228.8 Mbit/s</td><td>SFP</td></tr> <tr><td>CPRI3</td><td>2457.6 Mbit/s</td><td>SFP</td></tr> <tr><td>CPRI4</td><td>3072.0 Mbit/s</td><td>SFP</td></tr> <tr><td>CPRI5</td><td>4915.2 Mbit/s</td><td>SFP+</td></tr> <tr><td>CPRI6</td><td>6144.0 Mbit/s</td><td>SFP+</td></tr> <tr><td>CPRI7</td><td>9830.4 Mbit/s</td><td>SFP+</td></tr> <tr><td>CPRI8</td><td>10137.6 Mbit/s</td><td>SFP+</td></tr> <tr><td>CPRI9</td><td>12165.12 Mbit/s</td><td>SFP+</td></tr> <tr><td>CPRI10</td><td>24330.24 Mbit/s</td><td>SFP28</td></tr> <tr><td>OBSAI 1x</td><td>768 Mbit/s</td><td>SFP</td></tr> <tr><td>OBSAI 2x</td><td>1536 Mbit/s</td><td>SFP</td></tr> <tr><td>OBSAI 4x</td><td>3072 Mbit/s</td><td>SFP</td></tr> <tr><td>OBSAI 8x</td><td>6144 Mbit/s</td><td>SFP+</td></tr> <tr><td>1GFC</td><td>1.0625 Gbit/s</td><td>SFP</td></tr> <tr><td>2GFC</td><td>2.125 Gbit/s</td><td>SFP</td></tr> <tr><td>4GFC</td><td>4.25 Gbit/s</td><td>SFP</td></tr> <tr><td>8GFC</td><td>8.5 Gbit/s</td><td>SFP</td></tr> <tr><td>10GFC</td><td>10.51875 Gbit/s</td><td>SFP+</td></tr> <tr><td>16GFC</td><td>14.025 Gbit/s</td><td>SFP+</td></tr> </tbody> </table>		Standard	Bit Rate	Interfaces	STM-1/OC-3	155.52 Mbit/s	SFP	STM-4/OC-12	622.08 Mbit/s	SFP	STM-16/OC-48	2488.32 Mbit/s	SFP	STM-64/OC-192	9953.28 Mbit/s	SFP+	CPRI1	614.4 Mbit/s	SFP	CPRI2	1228.8 Mbit/s	SFP	CPRI3	2457.6 Mbit/s	SFP	CPRI4	3072.0 Mbit/s	SFP	CPRI5	4915.2 Mbit/s	SFP+	CPRI6	6144.0 Mbit/s	SFP+	CPRI7	9830.4 Mbit/s	SFP+	CPRI8	10137.6 Mbit/s	SFP+	CPRI9	12165.12 Mbit/s	SFP+	CPRI10	24330.24 Mbit/s	SFP28	OBSAI 1x	768 Mbit/s	SFP	OBSAI 2x	1536 Mbit/s	SFP	OBSAI 4x	3072 Mbit/s	SFP	OBSAI 8x	6144 Mbit/s	SFP+	1GFC	1.0625 Gbit/s	SFP	2GFC	2.125 Gbit/s	SFP	4GFC	4.25 Gbit/s	SFP	8GFC	8.5 Gbit/s	SFP	10GFC	10.51875 Gbit/s	SFP+	16GFC	14.025 Gbit/s	SFP+
	Standard	Bit Rate	Interfaces																																																																																																																																																				
10BASE-T	12.5 Mbit/s	RJ45																																																																																																																																																					
100BASE-TX	125 Mbit/s	RJ45																																																																																																																																																					
1000BASE-T	1.25 Gbit/s	RJ45																																																																																																																																																					
10GBASE-T	10.3125 Gbit/s	RJ45 (SFP+)																																																																																																																																																					
100BASE-X	125 Mbit/s	SFP																																																																																																																																																					
1000BASE-X	1.25 Gbit/s	SFP																																																																																																																																																					
10GBASE-X	10.3125 Gbit/s	SFP+																																																																																																																																																					
25 GbE	25.781250000 Gbit/s × 1 Lane	SFP28																																																																																																																																																					
40 GbE	10.312500000 Gbit/s × 4 Lane	QSFP+																																																																																																																																																					
100 GbE	25.781250000 Gbit/s × 4 Lane	QSFP28																																																																																																																																																					
200 GbE	53.125000000 Gbit/s × 4 Lane (26.5625 GbD PAM4 × 4 Lane)	QSFP56																																																																																																																																																					
400 GbE	53.125000000 Gbit/s × 8 Lane (26.5625 GbD PAM4 × 8 Lane)	QSFP-DD																																																																																																																																																					
400 GbE	53.125000000 Gbit/s × 8 Lane (26.5625 GbD PAM4 × 8 Lane)	OSFP																																																																																																																																																					
OTU1	2.666057143 Gbit/s	SFP																																																																																																																																																					
OTU2	10.709225319 Gbit/s	SFP+																																																																																																																																																					
OTU1e	11.049 107143 Gbit/s	SFP+																																																																																																																																																					
OTU2e	11.095727848 Gbit/s	SFP+																																																																																																																																																					
OTU1f	11.270089286 Gbit/s	SFP+																																																																																																																																																					
OTU2f	11.317642405 Gbit/s	SFP+																																																																																																																																																					
OTU3e1	11.142743644 Gbit/s × 4 Lane	SFP+																																																																																																																																																					
OTU3e2	11.145838894 Gbit/s × 4 Lane	SFP+																																																																																																																																																					
OTU3	10.754603390 Gbit/s × 4 Lane	QSFP+																																																																																																																																																					
OTU4	27.952493392 Gbit/s × 4 Lane	QSFP28																																																																																																																																																					
Standard	Bit Rate	Interfaces																																																																																																																																																					
STM-1/OC-3	155.52 Mbit/s	SFP																																																																																																																																																					
STM-4/OC-12	622.08 Mbit/s	SFP																																																																																																																																																					
STM-16/OC-48	2488.32 Mbit/s	SFP																																																																																																																																																					
STM-64/OC-192	9953.28 Mbit/s	SFP+																																																																																																																																																					
CPRI1	614.4 Mbit/s	SFP																																																																																																																																																					
CPRI2	1228.8 Mbit/s	SFP																																																																																																																																																					
CPRI3	2457.6 Mbit/s	SFP																																																																																																																																																					
CPRI4	3072.0 Mbit/s	SFP																																																																																																																																																					
CPRI5	4915.2 Mbit/s	SFP+																																																																																																																																																					
CPRI6	6144.0 Mbit/s	SFP+																																																																																																																																																					
CPRI7	9830.4 Mbit/s	SFP+																																																																																																																																																					
CPRI8	10137.6 Mbit/s	SFP+																																																																																																																																																					
CPRI9	12165.12 Mbit/s	SFP+																																																																																																																																																					
CPRI10	24330.24 Mbit/s	SFP28																																																																																																																																																					
OBSAI 1x	768 Mbit/s	SFP																																																																																																																																																					
OBSAI 2x	1536 Mbit/s	SFP																																																																																																																																																					
OBSAI 4x	3072 Mbit/s	SFP																																																																																																																																																					
OBSAI 8x	6144 Mbit/s	SFP+																																																																																																																																																					
1GFC	1.0625 Gbit/s	SFP																																																																																																																																																					
2GFC	2.125 Gbit/s	SFP																																																																																																																																																					
4GFC	4.25 Gbit/s	SFP																																																																																																																																																					
8GFC	8.5 Gbit/s	SFP																																																																																																																																																					
10GFC	10.51875 Gbit/s	SFP+																																																																																																																																																					
16GFC	14.025 Gbit/s	SFP+																																																																																																																																																					

Miscellaneous		
LED (RJ45)	Yellow: Link, Green: Activity (Blink)	
Variable Frequency	According to bit rate -200 ppm to +200 ppm, 0.1 ppm step (operation not assured if optical module specifications exceeded)	
Sync Clock	Connector: SMA Female Port 1 only Bit rates of either 1/8 or 1/16 can be selected only for Port 1 for the following: 400GBASE-XX4: Baudrate, 200GBASE-XX4: Baudrate, 100GBASE-XX4: CAUI4, 40GBASE-XX4: XLAUI, 25GBASE-XX: 25GAUI, OTU4: OTL 4.4, OTU3/OTU3 1/OTU3e2: OTL3.4 Min - Max: 350 mVp-p to 900 mVp-p 50Ω/AC (Single ended)	
Laser Safety*2	IEC 60825-1: 2014 Class 1 21CFR1040.10 and 1040.11*3	
Dimensions and Mass	261.6 (W) × 164 (H) × 52.8 (D) mm max. (excluding projections) 2.0 kg max. (without optical modules)	
Environmental	Operating: 0°C to +40°C, ≤85% RH (non-condensing) Storage: -30°C to +60°C, ≤90% RH (non-condensing)	
CE	EMC	2014/30/EU, EN61326-1, EN61000-3-2
	LVD	2014/35/EU, EN61010-1
	RoHS	2011/65/EU, (EU) 2015/863, EN IEC 63000: 2018
UKCA	EMC	S.I. 2016 No.1091, EN 61326-1, EN61000-3-2
	LVD	S.I. 2016 No.1101, EN 61010-1
	RoHS	S.I. 2012 No.3032, EN IEC 63000: 2018

*1: The frequency accuracy depends on the accuracy of the MT1040A internal clock or the external clock of MT1040A.
Refer to the external interfaces in MT1040A specifications.

*2: Safety measures for laser products
This product complies with optical safety standards in 21CFR1040.10, 1040.11 and IEC 60825-1; the following descriptive labels are affixed to the product.

*3: Excludes deviations caused by conformance to Laser Notice No. 56 dated May 8, 2019



THIS PRODUCT COMPLIES WITH 21 CFR 1040.10 AND 1040.11 EXCEPT FOR DEVIATIONS PURSUANT TO LASER NOTICE NO. 50, DATED JUNE 24, 2007

Ordering Information

Please specify the model/order number, name and quantity when ordering.
The names listed in the table below are Order Names. The actual name of the item may differ from the Order Name.

MT1040A Mainframe

Model/Order No.	Name	
MT1040A	Network Master Pro	
Standard Accessories		
MT1040A-006	High Power Supply*1:	1 pc
	Line Cord*2:	1 pc
B0745A	Softcase:	1 pc
B0771A*3	MT1040A Rear Panel kit:	1 pc
G0418A	AC Adaptor:	1 pc
G0423A	Two LilION Batteries:	1 pc
W4039AE	Quick Reference Guide:	1 pc
Z1746A	Stylus:	1 pc
Z2077A	Utilities ROM:	1 pc
Z2082A	Handle:	1 pc

Software Options*4

Model/Order No.	Name	
MT1040A-003*5	Connectivity for WLAN/Bluetooth	

Option for Two Transport Modules*6

Model/Order No.	Name	
MT1040A-020	Activate for 400G Dual/100G Quad Option	
Standard Accessories		
G0419A	AC Adapter (400 W)	

*1: The presence of the MT1040A-006 option can be recognized at the top right of the front panel. To retrofit to the already shipped item, please contact us.



Without MT1040A-006

With in MT1040A-006

*2: One line cord is attached to the area to shipment.

*3: Composed of B0720A, B0730A, B0731A, B740A and B0741A.

*4: These options can be retrofitted. The Model/Order No. of retrofit options is "-3**". Example

"Connectivity for WLAN/Bluetooth MT1040A-003" becomes "Connectivity for WLAN/Bluetooth Retrofit MT1040A-303".

When retrofitting an option, please either specify one of the following media along with the relevant option, or Web download.

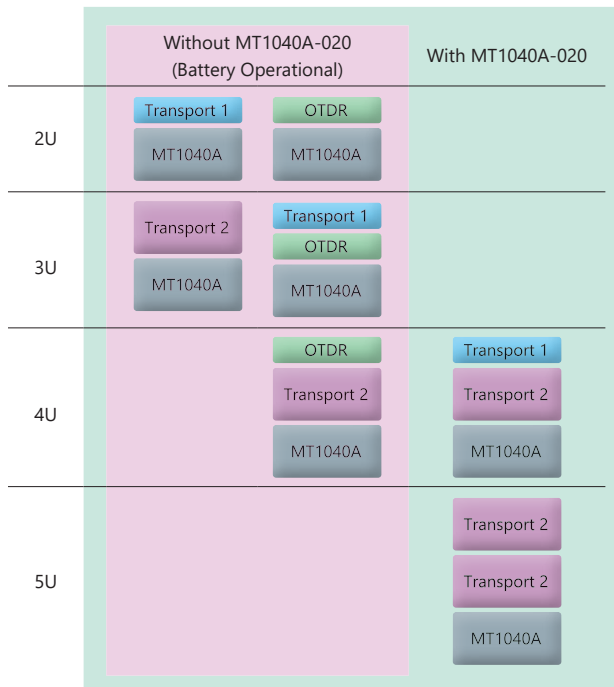
Z1849A: DVD-ROM for Retrofit Options

Z1850A: USB Stick for Retrofit Options

*5: WLAN is available for certified countries and regions including USA, Japan and EU countries. Please visit the Anritsu web site for updated information.

*6: Can be added to main unit in which MT1040A-006 already installed. However, battery operation is not possible when using two transponder modules together.

Depending on module combination, it is necessary to order MT1040A-020 Activate for 400G Dual/100G Quad Option.



- Transport 2 400G (QSFP-DD) Multirate Module MU104014B
400G (OSFP) Multirate Module MU104015A
100G Multirate Module MU104011A
- Transport 1 10G Multirate Module MU100010A1
100G Multirate Module MU100011A
- OTDR 1310/1550 nm SMF MU100020A
1310/1550/850/1300 nm SMF/MMF MU100021A
1310/1550/1625 nm SMF MU100022A
1310/1550/1650 nm SMF MU100023A

Ordering Information

Optional Accessories*7

Model/Order No.	Name
Operation Manuals	
W4038AE	MT1040A Transport Module Operation Manual
Mechanical Parts and Cases	
B0720A	Rear Panel
B0730A	Screw 2U
B0731A	Screw 3U
B0740A	Screw 4U
B0741A	Screw 5U
B0769A*8	Screw Kit for MT1040A
B0772A*9	Soft Case 5U
B0733A	Hard Case
B0773A*9	Hard Case 5U
Cables	
J1571A	Optical Cable SM LC/PC-SC/PC 3 m
J1575A	Optical Cable SM LC/PC-FC/PC 3 m
J1579A	Optical Cable SM LC/PC-LC/PC 3 m
J1581A	Optical Cable MM LC/PC-LC/PC 3 m
J1583A	Optical Attenuator 10 dB LC/PC-LC/PC
J1584A	RJ45 Cable 3 m
Application Parts	
G0306C*10	Video Inspection Probe
G0324A*11	Battery Charger
G0325A	GPS Receiver
G0382A*10	Autofocus Video Inspection Probe

*7: Optional Accessories cannot be repaired.

*8: Composed of B0730A, B0731A, B740A and B0741A.

*9: Refer to page 18 for dimensions and external view.

*10: This fiberscope uses the VIP function in the MT1040A Utility menu.

Different tip types are used by the G0382A and G0306C. When checking the end face of some SC-APC-F and FC-APC-F adapters, sometimes, there may be a dark region at the screen edge and the end face may not be checked correctly.



G0382A



G0306C

*11: This product must not be exported to China.

Maintenance Service

Available for new purchases only.

Model/Order No.	Name
MT1040A-ES210	2 Years Extended Warranty Service
MT1040A-ES310	3 Years Extended Warranty Service
MT1040A-ES510	5 Years Extended Warranty Service

400G (QSFP-DD) Multirate Module MU104014B

Model/Order No.	Name
MU104014B	400G (QSFP-DD) Multirate Module
Standard Accessories	
B0768A*12	ESD Box: 1 pc
W4039AE*13	Transport Module Quick Reference Guide: 1 pc

Protocol Options*4

Model/Order No.	Name
Ethernet/eCPRI/RoE	
MU104014B-006	100G Pluggable Coherent
MU104014B-012	Ethernet up to 25G Dual Channel
MU104014B-013	Ethernet 40G Single Channel
MU104014B-014	Ethernet 40G Dual Channel
MU104014B-015	Ethernet 100G Single Channel
MU104014B-016	Ethernet 100G Dual Channel
MU104014B-020*14	TCP Throughput
MU104014B-031	Ethernet 200G Single Channel
MU104014B-033	Ethernet 400G Single Channel
MU104014B-034	Ethernet 4x100G N Port BERT
MU104014B-036	OpenZR+ Multi-Client BERT
OTN	
MU104014B-006	100G Pluggable Coherent
MU104014B-052	OTN up to 10G Dual Channel
MU104014B-053	OTN 40G Single Channel
MU104014B-054	OTN 40G Dual Channel
MU104014B-055	OTN 100G Single Channel
MU104014B-056	OTN 100G Dual Channel
MU104014B-063*15	ODU Multiplexing/Multi Stage
CPRI/OBSAI	
MU104014B-074	CPRI/OBSAI up to 25G Dual Channel
SDH/SONET	
MU104014B-082	SDH/SONET up to 10G Dual Channel
MU104014B-084*16	STM-256/OC-768 Client Signal
Fibre Channel	
MU104014B-092	FC up to 16G Dual Channel

*12: The following combination of module patterns can be installed.

	QSFP-DD/QSFP56/QSFP28/QSFP+	SFP28/SFP+/SFP	OSFP
Pattern 1	4	0	1
Pattern 2	3	2	1
Pattern 3	2	4	1
Pattern 4	1	6	1

*13: Accessory only when purchasing MU104014B main unit.

*14: Requires to MU104014B-012.

*15: Requires that at least one of the following option is installed: MU104014B-052, MU104014B-053, MU104014B-054, MU104014B-055, MU104014B-056

*16: MU104014B does not have a physical interface of the option. The option is required for client signal mapped in the OTN.

Maintenance Service

Available for new purchases only.

Model/Order No.	Name
MU104014B-ES210	2 Years Extended Warranty Service
MU104014B-ES310	3 Years Extended Warranty Service
MU104014B-ES510	5 Years Extended Warranty Service

Ordering Information

400G (OSFP) Multirate Module MU104015A

Model/Order No.	Name
MU104015A	400G (OSFP) Multirate Module
Standard Accessories	
B0768A*12	ESD Box: 1 pc
W4039AE*13	Transport Module Quick Reference Guide: 1 pc

Protocol Options*4

Model/Order No.	Name
Ethernet/eCPRI/RoE	
MU104015A-006	100G Pluggable Coherent
MU104015A-012	Ethernet up to 25G Dual Channel
MU104015A-013	Ethernet 40G Single Channel
MU104015A-015	Ethernet 100G Single Channel
MU104015A-020*18	TCP Throughput
MU104015A-033	Ethernet 400G Single Channel
MU104015A-035	Ethernet 2x200G N Port BERT
OTN	
MU104015A-006	100G Pluggable Coherent
MU104015A-052	OTN up to 10G Dual Channel
MU104015A-053	OTN 40G Single Channel
MU104015A-055	OTN 100G Single Channel
MU104015A-063*19	ODU Multiplexing/Multi Stage
CPRI/OBSAI	
MU104015A-074	CPRI/OBSAI up to 25G Dual Channel
SDH/SONET	
MU104015A-082	SDH/SONET up to 10G Dual Channel
MU104015A-084*20	STM-256/OC-768 Client Signal
Fibre Channel	
MU104015A-092	FC up to 16G Dual Channel

*18: Requires to MU104015A-012.

*19: Requires that at least one of the following option is installed:
MU104015A-052, MU104015A-053, MU104015A-055

*20: MU104015A does not have a physical interface of the option.
The option is required for client signal mapped in the OTN.

Maintenance Service

Available for new purchases only.

Model/Order No.	Name
MU104015A-ES210	2 Years Extended Warranty Service
MU104015A-ES310	3 Years Extended Warranty Service
MU104015A-ES510	5 Years Extended Warranty Service

100G Multirate Module MU104011A

Model/Order No.	Name
MU104011A	100G Multirate Module
Standard Accessories	
B0768A*12	ESD Box: 1 pc
W4039AE*13	Transport Module Quick Reference Guide: 1 pc

Protocol Options*4

Model/Order No.	Name
Ethernet/eCPRI/RoE	
MU104011A-006	100G Pluggable Coherent
MU104011A-012	Ethernet up to 25G Dual Channel
MU104011A-013	Ethernet 40G Single Channel
MU104011A-014	Ethernet 40G Dual Channel
MU104011A-015	Ethernet 100G Single Channel
MU104011A-016	Ethernet 100G Dual Channel
MU104011A-020*21	TCP Throughput
OTN	
MU104011A-006	100G Pluggable Coherent
MU104011A-052	OTN up to 10G Dual Channel
MU104011A-053	OTN 40G Single Channel
MU104011A-054	OTN 40G Dual Channel
MU104011A-055	OTN 100G Single Channel
MU104011A-056	OTN 100G Dual Channel
MU104011A-063*22	ODU Multiplexing/Multi Stage
CPRI/OBSAI	
MU104011A-074	CPRI/OBSAI up to 25G Dual Channel
SDH/SONET	
MU104011A-082	SDH/SONET up to 10G Dual Channel
MU104011A-084*23	STM-256/OC-768 Client Signal
Fibre Channel	
MU104011A-092	FC up to 16G Dual Channel

*21: Requires to MU104011A-012.

*22: Requires that at least one of the following option is installed:
MU104011A-052, MU104011A-053, MU104011A-054, MU104011A-055,
MU104011A-056

*23: MU104011A does not have a physical interface of the option.
The option is required for client signal mapped in the OTN.

Maintenance Service

Available for new purchases only.

Model/Order No.	Name
MU104011A-ES210	2 Years Extended Warranty Service
MU104011A-ES310	3 Years Extended Warranty Service
MU104011A-ES510	5 Years Extended Warranty Service

Ordering Information

10G Multirate Module MU100010A1

Model/Order No.	Name
MU100010A1	10G Multirate Module
Standard Accessories	
W3935AE	MT1000A Transport Module Quick Reference Guide: 1 pc
B0692A*1	ESD Box (for optical modules)

*1: Up to four SFP+/SFPs can be stored.

Module Options*2

Model/Order No.	Name
Low Rate	
MU100010A-001*3	Up to 2.7G Dual Channel
Ethernet	
MU100010A-011	Ethernet 10G Single Channel
MU100010A-012	Ethernet 10G Dual Channel
MU100010A-020*4	TCP Throughput
OTN	
MU100010A-051	OTN 10G Single Channel
MU100010A-052	OTN 10G Dual Channel
MU100010A-061*5	ODU Multiplexing
MU100010A-062*5	ODU Flex
CPRI/OBSAI	
MU100010A-071	CPRI/OBSAI Up to 5G Dual Channel
MU100010A-072	CPRI/OBSAI 6G to 10G Single Channel
MU100010A-073	CPRI/OBSAI 6G to 10G Dual Channel
Fibre Channel	
MU100010A-002	FC 1G 2G 4G Dual Channel
MU100010A-091	FC 8G 10G Single Channel
MU100010A-092	FC 8G 10G Dual Channel
SDH/SONET	
MU100010A-081	STM-64 OC-192 Single Channel
MU100010A-082	STM-64 OC-192 Dual Channel

*2: These options can be retrofitted.

The Model/Order No. of retrofit options is "-3**".

Example

"Up to 2.7G Dual Channel MU100010A-001" becomes "Up to 2.7G Dual Channel Retrofit MU100010A-301".

When retrofitting an option, please either specify one of the following media along with the relevant option, or Web download.

Z1849A: DVD-ROM for Retrofit Options

Z1850A: USB Stick for Retrofit Options

*3: Includes OTN (OTU1), Ethernet (10 Mbps, 100 Mbps, 1 Gbps), SDH up to STM-16, and SONET up to OC-48.

*4: Requires that at least one of the following options is installed: MU100010A-001, MU100010A-011, MU100010A-012

*5: Requires that at least one of the following options is installed: MU100010A-001, MU100010A-051, MU100010A-052

Maintenance Service

Available for new purchases only.

Model/Order No.	Name
MU100010A1-ES210	2 Years Extended Warranty Service
MU100010A1-ES310	3 Years Extended Warranty Service
MU100010A1-ES510	5 Years Extended Warranty Service

100G Multirate Module MU100011A

Model/Order No.	Name
MU100011A*1	100G Multirate Module
Standard Accessories	
W3935AE	MT1000A Transport Module Quick Reference Guide: 1 pc
B0763A*2	ESD Box (for Optical modules): 1 pc

*1: MT1000A-006 is required for MU100011A.

*2: One CFP4 plus either up to two QSFP28s or up to four SFP/SFP+s can be stored.

Module Options*3

Model/Order No.	Name
Standard	
MU100011A-001*4	Up to 10G Single Channel
MU100011A-003*4	Up to 10G Dual Channel
Ethernet	
MU100011A-006	100G Pluggable Coherent
MU100011A-013*5	Ethernet 40G Single Channel
MU100011A-015*5	Ethernet 100G Single Channel
MU100011A-017*6	Ethernet 25G Single Channel
MU100011A-020*7	TCP Throughput
MU100011A-021*8	SyncE Wander
MU100011A-023*9	RS-FEC for 100GBASE-SR4
MU100011A-024*9	RS-FEC (544,514) for 100GBASE-xR
OTN	
MU100011A-006	100G Pluggable Coherent
MU100011A-053	OTN 40G Single Channel
MU100011A-055	OTN 100G Single Channel
MU100011A-062*10	ODU Flex
MU100011A-063*10	ODU Multiplexing/Multi Stage
Fibre Channel	
MU100011A-004	Up to 10G FC Single Channel
MU100011A-005	Up to 10G FC Dual Channel
MU100011A-091	FC 16G Single Channel
eCPRI/RoE/CPRI/OBSAI	
MU100011A-071	CPRI/OBSAI Up to 10G Single Channel
MU100011A-072	CPRI/OBSAI Up to 10G Dual Channel
MU100011A-073	CPRI 12/25G Single Channel
MU100011A-074	CPRI 12/25G Dual Channel
MU100011A-075*6	eCPRI/RoE 25G Dual Channel
SDH/SONET	
MU100011A-083*11	STM-256/OC-768 Client Signal

*3: These options can be retrofitted.

The Model/Order No. of retrofit options is "-3**".

Example

"Up to 10G Single Channel MU100011A-001" becomes "Up to 10G Single Channel Retrofit MU100011A-301".

When retrofitting an option, please either specify one of the following media along with the relevant option, or Web download.

Z1849A: DVD-ROM for Retrofit Options

Z1850A: USB Stick for Retrofit Options

*4: Only one of these option can be installed.

Included OTN(OTU1, OTU1e, OTU1f, OTU2, OTU2e, OTU2f), Ethernet up to 10 Gbps, SDH up to STM-64 and SONET up to OC-192.

*5: The MU100011A-023 is required for 100G FEC control.

*6: FEC selectable On/Off.

*7: Requires that at least one of the following option is installed:

MU100011A-001, MU100011A-003

*8: In addition to the MT1000A-005, at least one of the following options is required: MU100011A-001, MU100011A-003, MU100011A-017

*9: Requires to MU100011A-015

*10: Requires that at least one of the following option is installed:

MU100011A-001, MU100011A-003, MU100011A-053, MU100011A-055

*11: MU100011A does not have a physical interface of the option.

In combination with MU100011A-053, can be used as a client signal by OTN.

Maintenance Service

Available for new purchases only.

Model/Order No.	Name
MU100011A-ES210	2 Years Extended Warranty Service
MU100011A-ES310	3 Years Extended Warranty Service
MU100011A-ES510	5 Years Extended Warranty Service

Ordering Information



Optical Transceivers Specification



When using any of the MT1040A/MU104014B/MU104015A/MU104011A/MU100011A/MU100010A1 modules for testing optical interfaces, perform the test by installing the optical modules matching the test standards in the QSFP-DD/OSFP/QSFP28/SFP/SFP+/SFP28 slots. The following table lists the modules and supported standards.

Model/Order No.	Name	Form Factor	100M Ethernet	156M STM-1	614M CPRI	622M STM-4	768M OBSAI	1GFC	1.25G CPRI	1.25G Ethernet	1.54G OBSAI	2GFC	2.46G CPRI	2.488G STM-16	2.67G OTU1	3.07G CPRI OBSAI	4GFC	4.92G CPRI	6.14G CPRI OBSAI	8GFC	9.83G CPRI	9.95G STM-64	10.1G CPRI	10.3G Ethernet	10GFC	10.7G OTU2	11.05G OTU1e	11.09G OTU2e	11.27G OTU1f	11.3G OTU2f	16GFC	25G Ethernet	40G Ethernet	40G OTN	100G Ethernet	100G OTN	200G Ethernet	400G Ethernet		
✓	G0332A	100M FX 1310 nm MM SFP	SFP	1310 nm, MM, 2 km																																				
✓	G0319A	Up to 2.7G 1310 nm 15 km SFP	SFP			1310 nm, SM, 15 km																																		
✓	G0320A	Up to 2.7G 1310 nm 40 km SFP	SFP			1310 nm, SM, 40 km																																		
✓	G0321A	Up to 2.7G 1550 nm 80 km SFP	SFP			1550 nm, SM, 80 km																																		
✓	G0328A	1G/2G/4G FC 850 nm SFP	SFP					850 nm, MM, 0.5 km																																
✓	G0322A	1G/2G/4G FC 1310 nm SFP	SFP					1310 nm, SM, 10 km																																
✓	G0323A	1G/2G/4G FC 1550 nm SFP	SFP					1550 nm, SM, 40 km																																
✓	G0315A	10G LR/LW 1310 nm SFP+	SFP+																																					
✓	G0316A	10G ER/EW 1550 nm 40 km SFP+	SFP+																																					
✓	G0318A	10G ZR/ZW 1550 nm 80 km SFP+	SFP+																																					
✓	G0329A	10G LR 1310 nm SFP+	SFP+					1310 nm, SM, 10 km																																
✓	G0356A	8G FC/10G SR 850 nm SFP+	SFP+																	850 nm, MM, 0.3 km																				
✓	G0386A	16GFC SR 850 nm SFP+	SFP+																																					
✓	G0387A	16GFC LR 1310 nm SFP+	SFP+																																					
✓	G0388A	25G SR 850 nm SFP28	SFP28																																					
✓	G0389A	25G LR 1310 nm SFP28	SFP28																																					
✓	G0359A	40G SR4 850 nm QSFP+	QSFP+																																					
✓	G0334A	40G LR4 1310 nm QSFP+	QSFP+																																					
✓	G0366A	100G SR4 850 nm QSFP28	QSFP28																																					
✓	G0434A	100G LR4 Dual Rate 1310 nm QSFP28	QSFP28																																					
✓	G0426A	QSFP28 100GBASE-DR	QSFP28																																					
✓	G0427A	QSFP28 100GBASE-FR1	QSFP28																																					
✓	G0421A	QSFP56 200GBASE-LR4	QSFP56																																					
✓	G0420A	QSFP56 200GBASE-FR4	QSFP56																																					
✓	G0402A	QSFP-DD 400GBASE-DR4	QSFP-DD																																					
✓	G0403A	QSFP-DD 400GBASE-FR4	QSFP-DD																																					
✓	G0404A	QSFP-DD 400GBASE-LR4	QSFP-DD																																					
✓	G0405A	OSFP 400GBASE-DR4	OSFP																																					
✓	G0406A	OSFP 400GBASE-FR4	OSFP																																					
✓	G0425A	QSFP 400GBASE-2FR4	OSFP																																					
✓	G0428A	QSFP-DD 400GBASE-DR4+	QSFP-DD																																					

Ordering Information

OTDR Module MU100020A/MU100021A/MU100022A/MU100023A

Model Name	OTDR Module 1310/1550 nm SMF MU100020A		OTDR Module 1310/1550/850/1300 nm SMF/MMF MU100021A		
Wavelength Model					
Standard Accessories	J1693A Universal Connector 2.5 mm for OPM J1694A Universal Connector 1.25 mm for OPM W3811AE Quick Reference Guide				
Dynamic Range*1	MU100020A-020 Standard Dynamic Range (1310/1550 nm: 39/37.5 dB) MU100020A-021 Enhanced Dynamic Range(1310/1550 nm: 42/41 dB) MU100020A-022 High-Performance Dynamic Range (1310/1550 nm: 46/46 dB)		MU100021A-021 Enhanced Dynamic Range (1310/1550/850/1300 nm: 42/41/29/28 dB)		
Connector Polish*1	MU100020A-010 UPC Polish	MU100020A-011*2 APC Polish	MU100021A-010 UPC Polish	MU100021A-011*2 APC Polish	
Connector Type*3	MU100020A-037 FC Connector MU100020A-040 SC Connector	MU100020A-025 FC Connector key width 2.0 mm MU100020A-026 SC Connector	MU100021A-037*4 FC Connector MU100021A-040*4 SC Connector	MU100021A-025*5 FC Connector key width 2.0 mm MU100021A-026*6 SC Connector	
VFL*1	MU100020A-002*7 Visual Fault Locator		MU100021A-002*7 Visual Fault Locator		
Maintenance Service	MU100020A-ES210 2 Years Extended Warranty Service MU100020A-ES310 3 Years Extended Warranty Service MU100020A-ES510 5 Years Extended Warranty Service		MU100021A-ES210 2 Years Extended Warranty Service MU100021A-ES310 3 Years Extended Warranty Service MU100021A-ES510 5 Years Extended Warranty Service		

Model Name	OTDR Module 1310/1550/1625 nm SMF MU100022A		OTDR Module 1310/1550/1650 nm SMF MU100023A		
Wavelength Model					
Standard Accessories	J1693A Universal Connector 2.5 mm for OPM J1694A Universal Connector 1.25 mm for OPM W3811AE Quick Reference Guide				
Dynamic Range*1	MU100022A-022 High-Performance Dynamic Range (1310/1550/1625 nm: 46/46/44 dB)		MU100023A-021 Enhanced Dynamic Range (1310/1550 nm, 1650 nm: 42/41 dB, 35 dB)		
Connector Tip Polish*1	MU100022A-010 UPC Polish	MU100022A-011*2 APC Polish	MU100023A-010 UPC Polish	MU100023A-011*2 APC Polish	
Connector Types*3	MU100022A-037 FC Connector MU100022A-040 SC Connector	MU100022A-025 FC Connector key width 2.0 mm MU100022A-026 SC Connector	MU100023A-037 FC Connector MU100023A-040 SC Connector	MU100023A-025 FC Connector key width 2.0 mm MU100023A-026 SC Connector	
Visual Fault Locator*1	MU100022A-002*7 Visual Fault Locator		MU100023A-002*7 Visual Fault Locator		
Maintenance Service	MU100022A-ES210 2 Years Extended Warranty Service MU100022A-ES310 3 Years Extended Warranty Service MU100022A-ES510 5 Years Extended Warranty Service		MU100023A-ES210 2 Years Extended Warranty Service MU100023A-ES310 3 Years Extended Warranty Service MU100023A-ES510 5 Years Extended Warranty Service		

*1: Factory installed option only and cannot be retrofitted.

*2: An APC connector cannot be specified for the MM port, which uses a UPC connector.

*3: One specified connector adapter supplied free of charge.

*4: One each of same connector adapter for SM port and MM port supplied free of charge. Cannot specify different connector adapters for each port.

*5: One connector adapter for SM port supplied free of charge. One connector adapter equivalent to Option 37 (FC/UPC) for MM port supplied free of charge.

*6: One specified connector adapter for SM port supplied free of charge. One connector adapter equivalent to Option 40 (SC/UPC) for MM port supplied free of charge.

*7: With built-in dedicated port for 2.5 mm universal optical Rx type visible light source; J1335A required to connect 1.25 mm fiber.

Replacement Adapters

Model/Order No.	MU100020A MU100022A MU100023A*8	MU100021A	
For UPC Polish			
	SM port	SM port	MM port
J0617B (FC/UPC)	✓	✓	✓
J0619B (SC/UPC)	✓	✓	✓
For APC Polish			
	SM port	SM port	MM port
J0739A (FC/APC)	✓	✓	N/A
J1697A (SC/APC)	✓	✓	N/A

*8: There are two SM ports — one for 1310/1550 nm, and another for 1650 nm.

OTDR Module Application Parts




Model/Order No.	Name
W3810AE	MT1000A MU100020A Network Master Pro Operation Manual (Printed Matter)
J1335A	MU/LC Connector Adapter Converts ferrule connector diameter from 2.5 mm → 1.25 mm for visible light source (Option 002)
J1530A	SC Plug-in Converter (UPC(P)-APC(J)) SC/UPC → SC/APC Adapter
J1531A	SC Plug-in Converter (APC(P)-UPC(J)) SC/APC → SC/UPC Adapter
J1532A	FC Plug-in Converter (UPC(P)-APC(J)) FC/UPC → FC/APC Adapter
J1533A	FC Plug-in Converter (APC(P)-UPC(J)) FC/APC → FC/UPC Adapter
J1534A	LC-SC Plug-in Converter (for SM, SC(P)-LC(J)) SC/UPC → LC/UPC Adapter for SM fiber
J1535A	LC-SC Plug-in Converter (for MM, SC(P)-LC(J)) SC/UPC → LC/UPC Adapter for MM fiber
NETWORKS*9	PC Emulation Software for Data Analysis and Reporting

*9: Reduce the software display resolution to 1920 × 1080 or less.

Network Master Pro MT1040A

Accessories for MT1040A Dual-Module Configuration

The size of the MT1040A depends on the module configuration. Choose the appropriate case.

Module Combination	Mounting Screws	Soft Case		Hard Case	
		B0745A	B0772A	B0733A	B0773A
Short (2U)	B0730A				
Standard Transport (Type 2) (3U)	B0731A			 345 (W) × 238 (H) × 480 (D) mm, 3.5 kg	 495 (W) × 338 (H) × 663 (D) mm, 12.3 kg
+ Transport (Type 1) or OTDR Module (4U)	B0740A				
Two Transport (type 2) Modules (5U)	B0741A				



MT1040A



B0733A



B0773A

Size of Each Hard Case for MT1040A

Network Master Pro MT1040A

Method for Adding Measurement Modules

Preparation 1: Version up the software for MT1040A

Install the latest software in the MT1040A.
This software can be obtained from the Anritsu web site.

Preparation 2: Remove the battery pack from Mainframe

- 1) Disconnect the AC cable.
- 2) Use screw driver or Coin and remove the battery lid from MT1040A.



- 3) Remove the battery pack.



Preparation 3: Replacing the connected modules

- 1) Place the instrument on its front on a plain surface.
Loosen the screws (shown by the blue circle) on rear side of the connected module.



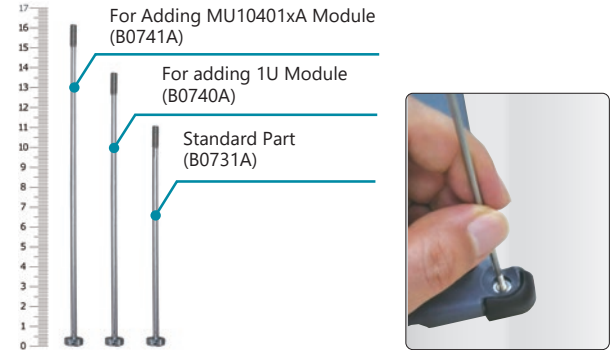
- 2) After loosening the four screws, lift up the connected module with holding both sides.
If you cannot lift up, loosen the four screws again.
You can see the panel as below.



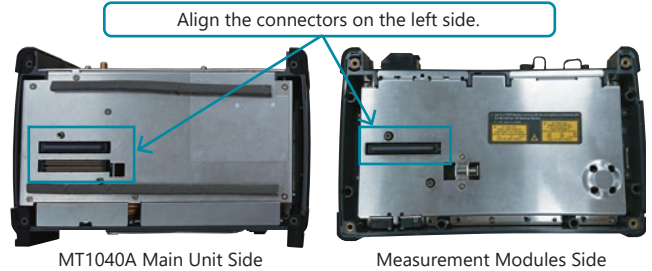
MT1040A Main Unit Back Panel

Adding 1U module

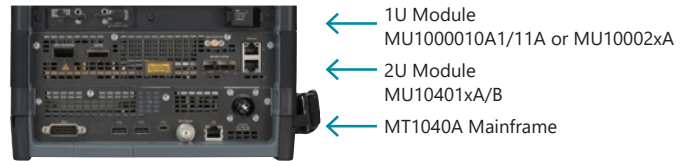
- 1) Remove four screws of former module and replace to the next screws.
Choose the bolts matching the added module. Use the B0740A for the 1U size module.



- 2) Align the module horizontally with the MT1040A as shown below.



- 3) Install the OTDR module in the correct MU10401xA/B slot as shown below.



Side View after Assembling Modules

Note: Align the four edges when installing the option; the module connector is easily damaged by misalignment.

- 4) Secure the module using the B0740A part chosen in step 1.
After installing the module as shown in the figure on the right, check that there is no gap between the modules.



After attaching the modules

- 1) After attaching the modules, connect the AC cable or install the battery packs.



- 2) Turn on the MT1040A.
Please check whether a new module is recognized at the system information.

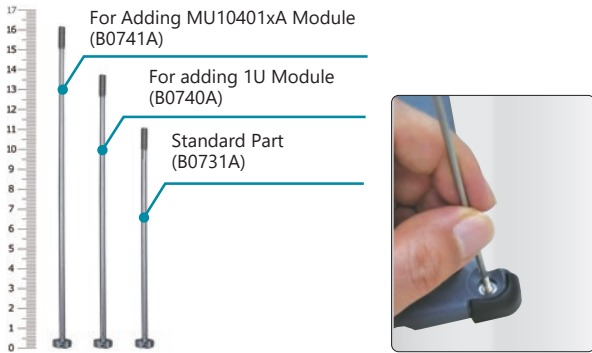


Network Master Pro MT1040A

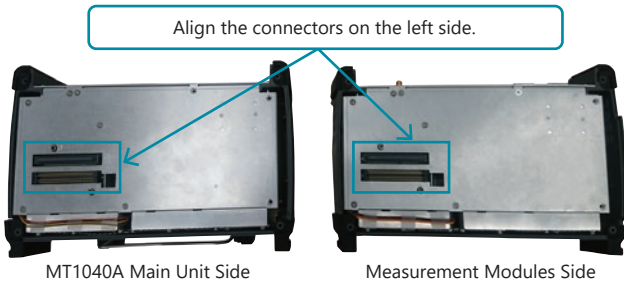
Method for Adding Measurement Modules

Adding Transport Module (MU10401xA)

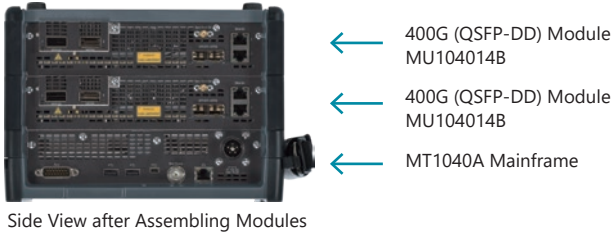
- 1) Confirm that the MT1040A-020 option is installed in the MT1040A main unit.
- 2) Choose the bolts matching the added module.
Use the B0741A for the MU10401xA module



- 3) Align the transport module horizontally with the MT1040A as shown below.



- 4) Install the transport module in the correct MT1040A slot as shown below.



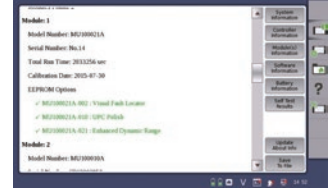
Note: Align the four edges when installing the option; the module connector is easily damaged by misalignment.

- 5) Secure the module using the B0741A part chosen in step 2.
After installing the module as shown in the figure on the right, check that there is no gap between the modules.



After attaching the modules

- 1) Connect the G0419A standard accessory of the MT1040A-020 option to the MT1040A. The G0418A will not start. Additionally, battery operation is not possible when two transport modules are installed.
- 2) Turn on the MT1040A.
Please check whether a new module is recognized at the system information.



Network Master Pro MT1040A

Related Products

Network Master Pro MT1000A



10G Multirate Module
100G Multirate Module

MU100010A1
MU100011A

Installing the MU100010A1 or MU100011A in the MT1000A supports commissioning and maintenance tests of communications networks operating at speeds from 10 Mbps to 100 Gbps. In addition to Ethernet, OTN, eCPRI/RoE/CPRI/OBSAI, Fibre Channel and SyncE protocols used by mobile-network base stations are supported too.

OTDR Module 1310/1550 nm SMF **MU100020A**
OTDR Module 1310/1550/850/1300 nm SMF/MMF **MU100021A**
OTDR Module 1310/1550/1625 nm SMF **MU100022A**
OTDR Module 1310/1550/1650 nm SMF **MU100023A**

Installing an OTDR Module MU100020A/MU100021A/MU100022A/MU100023A provides the OTDR functions required for optical fiber I&M. Work efficiency is increased by all-in-one support for optical fiber tests and data communications network commissioning.



Network Master Pro MT1040A



MX10903xPC is a test solution designed for virtual environments. Its key feature is the ability to accurately measure communication quality in virtual and cloud environments using software. Even in situations where physical measurement devices cannot be installed, it enables one-way latency and real IP traffic load testing.

- Enables software-based measurement of communication quality in virtual and cloud environments
- Can be combined with MT1000A/MT1040A for one-way latency and real IP traffic load testing
- Provides convenience and remote control through web browser operation and API integration



CMA5 Series

Light Source/Optical Power Meter

For optical fiber installation and maintenance.



ACCESS Master MT9085 Series

For WAN/MFH/DCI/FTTH Optical Fiber I&M

- Improved operability with powerful synergy of 8-inch touchscreen and hardware keys
- At-a-glance Pass/Fail evaluation using Fiber Visualizer
- All OTDR, OLTS, and Visible Light Source operations on one screen
- Short event dead zone of ≤ 0.8 m and high dynamic range of 46 dB max.
- Power meter option for measuring optical power up to +30 dBm



• United States

Anritsu Americas Sales Company

490 Jarvis Drive, Morgan Hill, CA 95037-2809, U.S.A.
Phone: (408)-778-2000

• Canada

Anritsu Electronics Ltd.

Americas Sales and Support

490 Jarvis Drive, Morgan Hill, CA 95037-2809, U.S.A.
Phone: +1-800-Anritsu (1-800-267-4878)

• Brazil

Anritsu Eletrônica Ltda.

Praça Amadeu Amaral, 27 - 1 Andar
01327-010 - Bela Vista - Sao Paulo - SP, Brazil
Phone: +55-11-3283-2511

• Mexico

Anritsu Company, S.A. de C.V.

Bldv Miguel de Cervantes Saavedra #169 Piso 1, Col. Granada
Mexico, Ciudad de Mexico, 11520, MEXICO
Phone: +52-55-4169-7104

• United Kingdom

Anritsu EMEA Limited

900 Capability Green, Luton, Bedfordshire, LU1 3LU, U.K.
Phone: +44-1582-433200

• France

Anritsu SA

12 avenue du Québec, Immeuble Goyave,
91140 VILLEBON SUR YVETTE, France
Phone: +33-1-60-92-15-50

• Germany

Anritsu GmbH

Nemetschek Haus, Konrad-Zuse-Platz 1,
81829 München, Germany
Phone: +49-89-442308-0

• Italy

Anritsu S.R.L.

Spaces Eur Arte, Viale dell'Arte 25, 00144 Roma, Italy
Phone: +39-6-509-9711

• Sweden

Anritsu AB

Kistagången 20 B, 2 tr, 164 40 Kista, Sweden
Phone: +46-8-534-707-00

• Finland

Anritsu AB

Technopolis Aviapolis, Teknobulevardi 3-5 (D208.5.),
FI-01530 Vantaa, Finland
Phone: +358-20-741-8100

• Denmark

Anritsu A/S

c/o Regus Winghouse, Ørestads Boulevard 73, 4th floor,
2300 Copenhagen S, Denmark
Phone: +45-7211-2200

• Spain

Anritsu EMEA GmbH

Representation Office in Spain

Calle Manzanares 4, Primera planta, 28005 Madrid, Spain
Phone: +34-91-572-6761

• Austria

Anritsu EMEA GmbH

Am Belvedere 10, A-1100 Vienna, Austria
Phone: +43-(0)1-717-28-710

• United Arab Emirates

Anritsu A/S

Office No. 164, Building 17, Dubai Internet City
P. O. Box – 501901, Dubai, United Arab Emirates
Phone: +971 (0) 4-2424919

• India

ANRITSU INDIA PRIVATE LIMITED

6th Floor, Indiqube ETA, No.38/4, Adjacent to EMC2,
Doddanekundi, Outer Ring Road, Bengaluru – 560048, India
Phone: +91-80-6728-1300
Fax: +91-80-6728-1301

• Singapore

ANRITSU PTE LTD

1 Jalan Kilang Timor, #07-04/06 Pacific Tech Centre
Singapore 159303
Phone: +65-6282-2400

• Vietnam

ANRITSU COMPANY LIMITED

16th Floor, Peakview Tower, 36 Hoang Cau Street, O Cho Dua Ward,
Hanoi, Vietnam
Phone: +84-24-3201-2730
Fax: +84-24-3201-2740

• P.R. China (Shanghai)

Anritsu (China) Co., Ltd.

Room 2301-2303, Tower A, New Caohejing International Business
Center No. 391 Gui Ping Road, Shanghai, 200233, P.R. China
Phone: +86-21-6237-0898

• P.R. China (Hong Kong)

ANRITSU COMPANY LIMITED

Unit 1302, 13th Floor, New East Ocean Center,
No.9 Science Museum Road, TsimShaTsui East,
Kowloon, Hong Kong
Phone: +852-2301-4980

• Japan

ANRITSU CORPORATION

8-5, Tamura-cho, Atsugi-shi, Kanagawa, 243-0016 Japan
Phone: +81-46-296-1244
Fax: +81-46-296-1239

• Korea

Anritsu Corporation Limited

8F, A TOWER, 20, Gwacheondaero 7-gil, Gwacheon-si,
Gyeonggi-do, 13840, Republic of Korea
Phone: +82-2-6259-7300

• Australia

Anritsu Pty Ltd

Unit 20, 21-35 Ricketts Road, Mount Waverley, Victoria 3149, Australia
Phone: +61-3-9558-8177

• Taiwan

ANRITSU COMPANY, INC.

7F, No. 316, Sec. 1, NeiHu Rd., Taipei 114, Taiwan
Phone: +886-2-8751-1816