

PRODUCT DATA SHEET

C6021

4-Port Dual Directional Coupler employs two, 3-Port Uni-Directional Couplers, internally connected, in tandem, providing measurement of both forward and reverse power. Ideal for simultaneously monitoring a system's forward and reverse power and for reflectometer measurements. Unlike the Bi-Directional Coupler, the directivity of the Dual Directional Coupler is unaffected by the loads on the coupled ports.

Features:

High Power Wide Bandwidths Small Size Flat Coupling Custom Designs Available

Electrical Specifications:

Frequency: 0.01 - 1000 MHz
Power: 500 W CW
Coupling: 40 ± 1.0 dB Max.
Insertion Loss: 0.45 dB Max.
Flatness: ± 0.5 dB Max.
VSWR (ML): 1.3:1 Max.
Directivity: 20 dB Min.

Mechanical Specifications:

Type: Connectorized
Material: Aluminum 6061-T6
Surface Finish: Chem. Film Per MIL-DTL-5541F
Type I Class 3 (Yellow Iridite)
RoHS Compliant Available
Operating Temperature: -55°C to +75°C
Storage Temperature: -60°C to +85°C
Humidity: 95% Non-Condensing
Size: 6.7 x 2.27 x 1.69"

Connector Configurations:

Model	Input (J1)	Output (J2)	Fwd (J3)	Rev (J4)
C6021-10	N Female	N Female	N Female	N Female
C6021-12	N Female	N Female	SMA	SMA
C6021-13	N Female	N Female	BNC	BNC
C6021-102	N Female	N Male	N Female	N Female
C6021-610	N Female	N Male	N Female	N Female
C6021-712	N Male	N Female	SMA	SMA
C6021-714	N Male	N Female	N Female	N Female

Werlatone® Broadband Dual, Uni, and Bi Directional RF Couplers are designed to tolerate the most stringent operating conditions associated with military and EMC testing environments. Many of our RF Directional Couplers, designated Mismatch Tolerant®, will operate continuously, at rated power, into a severe load mismatch condition. Our multi-octave Directional Couplers maintain exceptional coupling flatness, directivity, VSWR, and insertion loss.

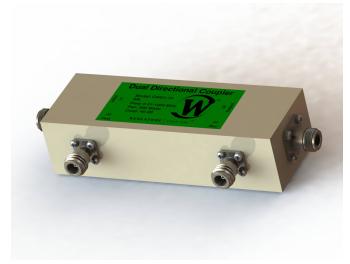
Restriction on use, duplication, or disclosure of proprietary information. This document contains proprietary information which is the sole property of Werlatone, Inc.

Werlatone, Inc. 17 Jon Barrett Road Patterson, NY 12563 T:(845)278-2220 F:(845)278-3440 sales@werlatone.com www.werlatone.com



WERLATONE

Model C6021

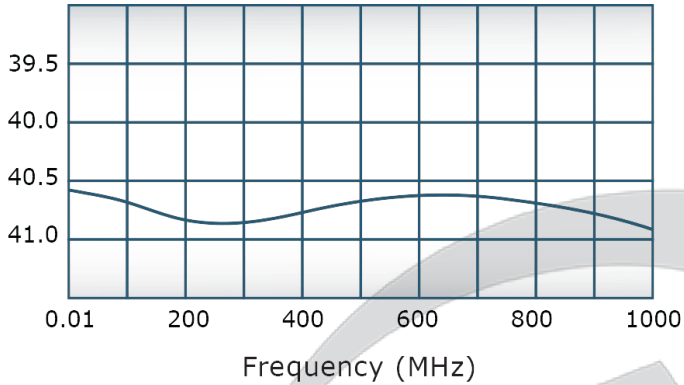


PRODUCT DATA SHEET

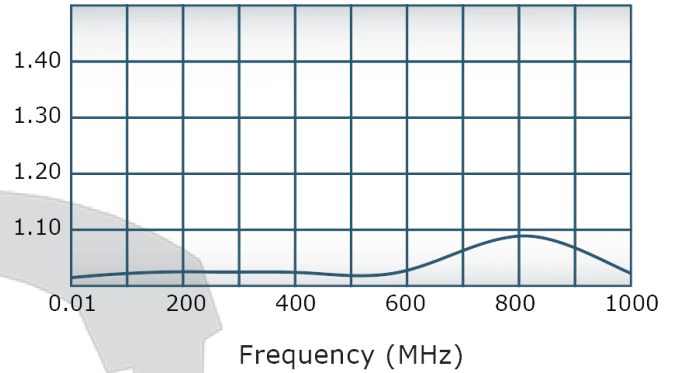
C6021

Performance Data (Specifications subject to change without notice):

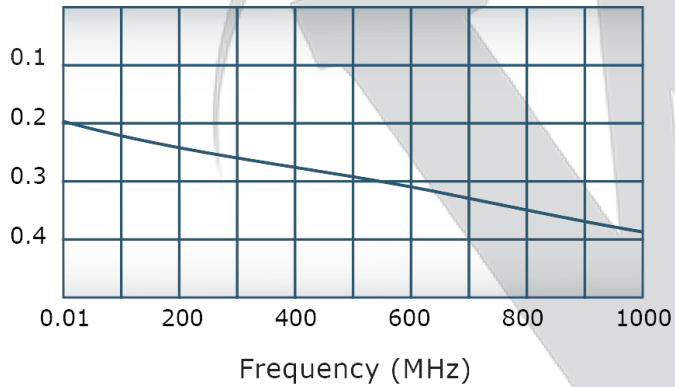
Coupling:



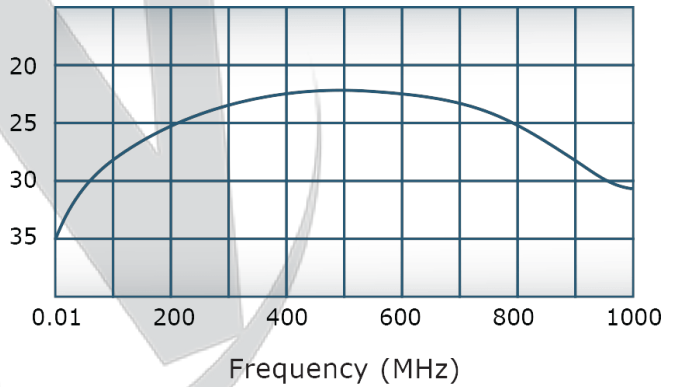
VSWR:



Insertion Loss:



Directivity:



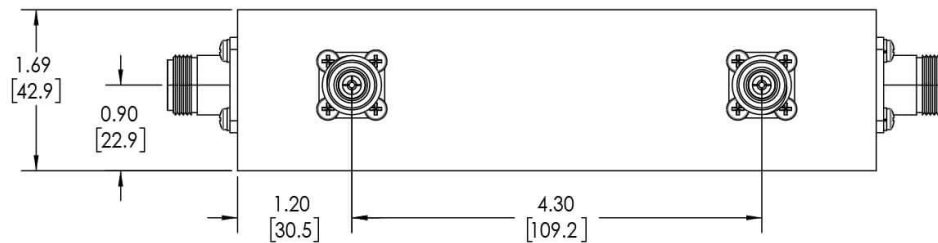
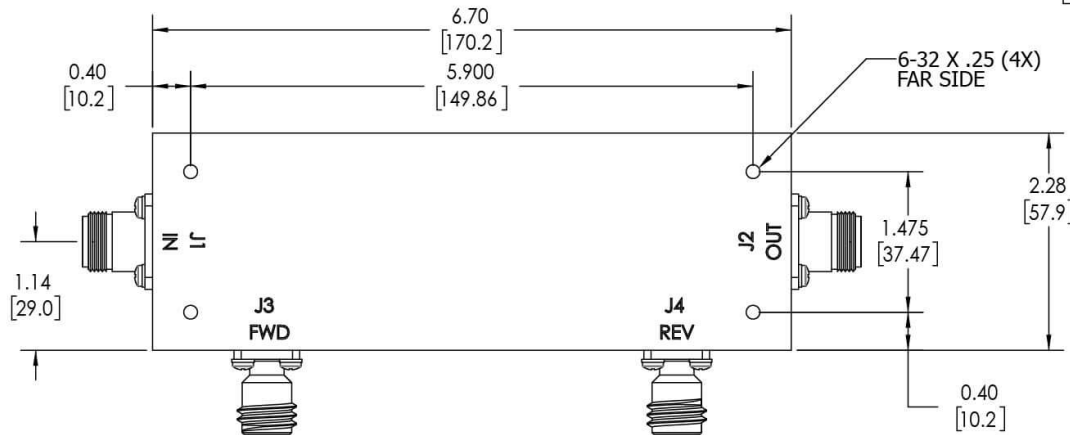
Restriction on use, duplication, or disclosure of proprietary information. This document contains proprietary information which is the sole property of Werlatone, Inc.

Werlatone, Inc. 17 Jon Barrett Road Patterson, NY 12563 T:(845)278-2220 F:(845)278-3440 sales@werlatone.com www.werlatone.com

RESTRICTION ON USE, DUPLICATION OR DISCLOSURE OF PROPRIETARY INFORMATION



This document contains proprietary information which is the sole property of Werlatone, Inc.

REVISION HISTORY			
REV.	REVISION RECORD	DATE	APPROVED
A	ECN 9696	5/14/2019	RB



NOTES: UNLESS OTHERWISE SPECIFIED

- MATERIAL: ALUMINUM 6061-T6**
- FINISH: CHEM FILM PER MIL-DTL-5541F TYPE I CLASS 3 (YELLOW IRIDITE)**
- CONNECTORS:**
J1-J4: N FEMALE

UNLESS OTHERWISE SPECIFIED		OWN	DATE		WERLATONE SINCE 1965	17 Jon Barrett Rd Patterson, NY 12563	
INTERPRET DRAWING IN ACCORDANCE WITH MIL-STD-100		SD	5/14/2019				
DIMENSIONS FOR ASSEMBLY		CHK	DATE	OUTLINE			
PARENTHESES FOR REF ONLY		CS	5/14/2019				
DIMENSIONS ARE IN INCHES		ENGR	DATE	SIZE CAGE CODE DWG NO			
DIMENSIONAL LIMITS APPLY BEFORE PROCESSES		INFR	DATE				
TOLERANCES:		QA	DATE	10641-500			
ANGLES ± 2°		RLSE	DATE				
3 PL ± .005 [13]		SCALE: 1:1.25					
2 PL ± .015 [38]							
REMOVE ALL BURRS AND SHARP EDGES R.01 MAX							
CONCENTRICITY MACHINED DIA. .002 FIM							
MACHINE TOOL MISMATCH .003 MAX		SHEET 1 OF 1					
THIRD ANGLE PROJECTION 							
NEXT ASSY USED ON							
APPLICATION							

Restriction on use, duplication, or disclosure of proprietary information. This document contains proprietary information which is the sole property of Werlatone, Inc.
 Werlatone, Inc. 17 Jon Barrett Road Patterson, NY 12563 T:(845)278-2220 F:(845)278-3440 sales@werlatone.com www.werlatone.com